

**SURVEY WORK POINTS**

POINT	NORTH	EAST	ELEVATION	CHAIN	STATION	OFFSET	DESCRIPTION
101	1855066.4220	2426833.2670	643.2040	IL40	635+25.09	50.8464' RT	SURVEY WORK POINT PIN
102	1854430.2110	2426780.2300	644.6310	IL40	628+88.58	1.5602' RT	SURVEY WORK POINT PIN
103	1854642.7170	2426637.7540	637.4180	IL40	631+00.24	142.1659' LT	SURVEY WORK POINT PIN
104	1854384.7790	2426488.4160	636.4549	IL40	628+41.43	289.981' LT	SURVEY WORK POINT PIN
105	1854056.1960	2426300.0480	637.2744	IL40	625+15.01	476.4527' LT	SURVEY WORK POINT PIN
106	1855850.8470	2426790.3950	638.6585	IL40	643+09.25	3.3517' RT	SHINER
107	1853440.2980	2426777.9190	647.8638	IL40	618+98.65	0.8271' RT	SURVEY WORK POINT PIN
108	1854740.8690	2426738.1160	634.4180	IL40	631+98.98	42.3841' LT	SURVEY WORK POINT PIN
109	1855231.1850	2426974.5620	636.8169	IL40	636+90.68	191.1678' RT	SURVEY WORK POINT PIN
110	1854725.7860	2426920.8020	637.7763	IL40	631+84.98	140.3876' RT	SURVEY WORK POINT NAIL
111	1854902.3230	2427113.5580	637.0943	IL40	633+62.65	332.0998' RT	SURVEY WORK POINT NAIL
112	1854318.1040	2426612.7680	644.3843	IL40	627+75.49	165.2381' LT	SURVEY WORK POINT NAIL
113	1854327.3310	2426731.6440	643.0356	IL40	627+85.41	46.4186' LT	SURVEY WORK POINT NAIL
114	1854334.0550	2426458.7010	636.4728	IL40	627+90.53	319.3965' LT	SURVEY WORK POINT NAIL
115	1854945.6590	2426651.5630	636.7692	IL40	634+03.26	130.1426' LT	SURVEY WORK POINT NAIL

**HORIZONTAL CONTROL POINTS**

POINT	NORTH	EAST	ELEVATION	CHAIN	STATION	OFFSET	DESCRIPTION
1	1855066.4220	2426833.2670	643.2040	IL40	635+25.09	50.8464' RT	SURVEY WORK POINT PIN
2	1854430.2110	2426780.2300	644.6310	IL40	628+88.58	1.5602' RT	SURVEY WORK POINT PIN
3	1851396.7058	2426779.0528	653.9021	IL40	598+55.06	0.0000'	POT
4	1856072.6304	2426788.3505	.0000	IL40	645+31.02	0.0000'	POT
5	1854061.4001	2426776.4959	.0000	IL40	625+19.75	0.0000'	POT
6	1854796.0349	2426780.8260	.0000	IL40	632+54.40	0.0000'	POT

**REFERENCE TIES**

POINT	CHAIN	STATION	OFFSET	DESCRIPTION
500	IL40	635+81.33	107.8969' RT	SHINER
501	IL40	635+81.34	80.0254' RT	SHINER
502	IL40	634+66.69	0.4352' LT	SHINER
503	IL40	642+65.51	83.3619' RT	SHINER
504	IL40	643+08.17	47.0508' RT	SHINER
505	IL40	643+07.78	42.0134' LT	SHINER
506	IL40	628+89.44	44.0277' LT	SHINER
507	IL40	628+88.37	46.0752' RT	SHINER
508	IL40	628+39.34	45.6412' RT	SHINER
509	IL40	631+25.63	132.8474' LT	SHINER
510	IL40	631+15.56	196.1661' LT	SHINER
511	IL40	630+29.88	187.3699' LT	SHINER
512	IL40	631+05.52	367.2239' LT	POWER POLE
513	IL40	619+04.92	97.8599' LT	SHINER
514	IL40	618+99.46	51.6971' LT	SHINER
515	IL40	618+98.12	44.9796' RT	SHINER

**VERTICAL CONTROL - BENCHMARKS**

POINT	NORTH	EAST	ELEVATION	STATION	OFFSET	DESCRIPTION
401	1854748.2300	2426736.3680	644.9560	632+06.35	44.18' LT	VERTICAL CONTROL STATION
402	1852177.5740	2426732.3840	669.5630	606+35.62	45.86' LT	VERTICAL CONTROL STATION

Chain IL40 contains:  
3 5 4

Beginning chain IL40 description

Point 3                    N   1,851,396.7058   E   2,426,779.0528   Sta   598+55.0574

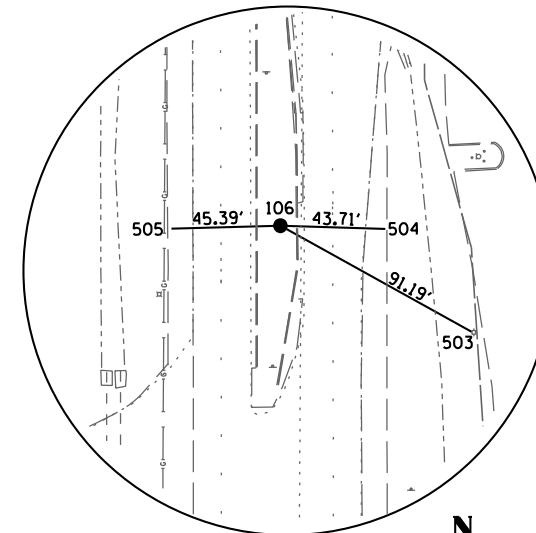
Course from 3 to 5 N 0 ° 03' 17.91" W Dist 2,664.6955

Point 5                    N   1,854,061.4001   E   2,426,776.4959   Sta   625+19.75

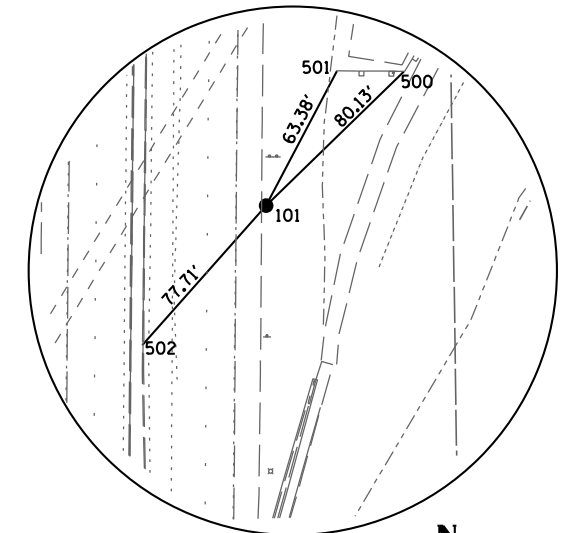
Course from 5 to 4 N 0 ° 20' 15.74" E Dist 2,011.2653

Point 4                    N   1,856,072.6304   E   2,426,788.3505   Sta   645+31.0178

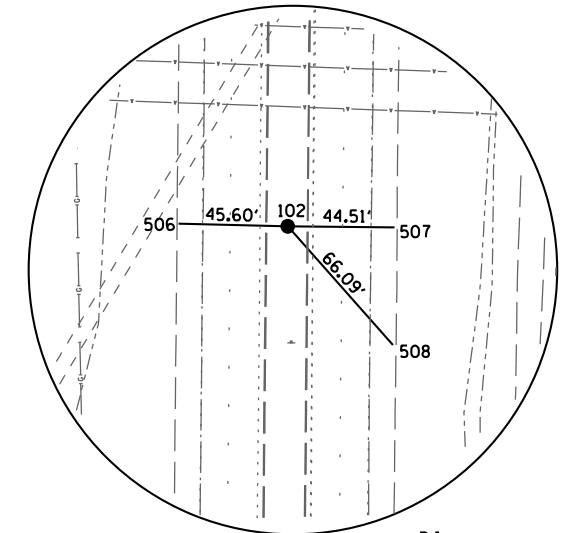
Ending chain IL40 description



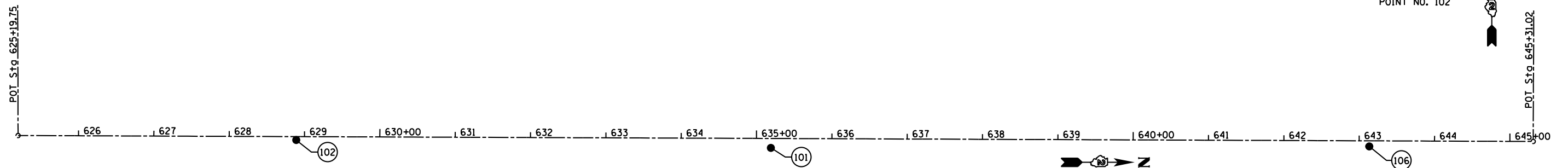
HORIZONTAL CONTROL POINT NO. 106



HORIZONTAL CONTROL POINT NO. 101



HORIZONTAL CONTROL POINT NO. 102



FILE NAME = s:\p1\6380--6395\6346\025\micro\Sh\0264C17.sht-hvc.dgn



USER NAME = brianf	DESIGNED - VLF	REVISED -
PLOT SCALE = 40.0000' / in.	DRAWN - BJB	REVISED -
PLOT DATE = 8/14/2014	CHECKED - MAG	REVISED -
	DATE - 8-14-14	REVISED -

**STATE OF ILLINOIS  
DEPARTMENT OF TRANSPORTATION**

**HORIZONTAL AND VERTICAL CONTROL**

SCALE: N/A    SHEET 1 OF 1 SHEETS    STA.    TO STA.

F.A.P. RTE.	SECTION	COUNTY	TOTAL SHEETS	SHEET NO.
646	101 BR-3	WHITESIDE	130	24
CONTRACT NO. 64C17			FED. ROAD DIST. NO. 2 ILLINOIS FED. AID PROJECT	