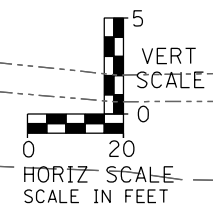
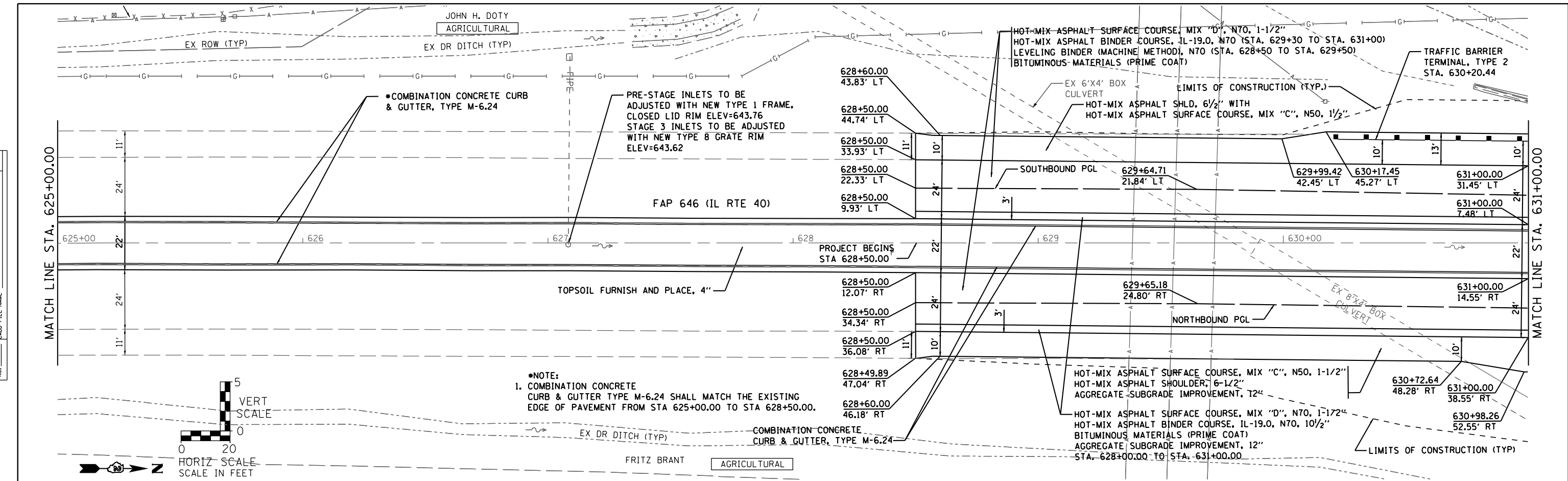
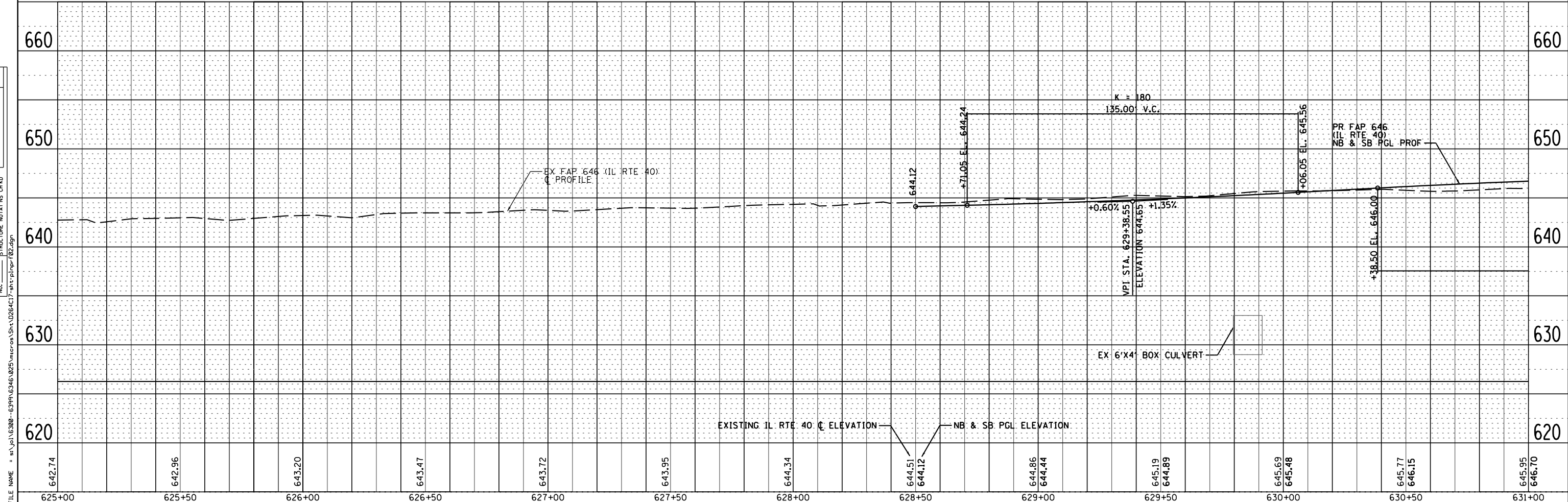


PLAN	SURVEYED	DATE
	PLOTTED	
	GRADES CHECKED	
	STRUCTURE NOTED	
	FILE NAME	

PROFILE	SURVEYED	DATE
	PLOTTED	
	GRADES CHECKED	
	STRUCTURE NOTED	
	FILE NAME	



NOTE:  
1. COMBINATION CONCRETE CURB & GUTTER TYPE M-6.24 SHALL MATCH THE EXISTING EDGE OF PAVEMENT FROM STA 625+00.00 TO STA 628+50.00.



STRAND ASSOCIATES  
1170 SOUTH HOUBOLT ROAD  
JOLIET, ILLINOIS 60431  
(815) 744-4200

USER NAME = brianf	DESIGNED - VLF	REVISED -
	DRAWN - BJF	REVISED -
PLOT SCALE = 40.0000' / in.	CHECKED - MAG	REVISED -
PLOT DATE = 8/14/2014	DATE - 8-14-14	REVISED -

STATE OF ILLINOIS  
DEPARTMENT OF TRANSPORTATION

PLAN AND PROFILE FAP ROUTE 646 (IL 40)			
SCALE: AS SHOWN	SHEET 2	OF 4 SHEETS	STA. 625+00 TO STA. 631+00

F.A.P. RTE. 646	SECTION 101 BR-3	COUNTY WHITESIDE	TOTAL SHEETS 130	SHEET NO. 28
CONTRACT NO. 64C17				FED. ROAD DIST. NO. 2 ILLINOIS FED. AID PROJECT