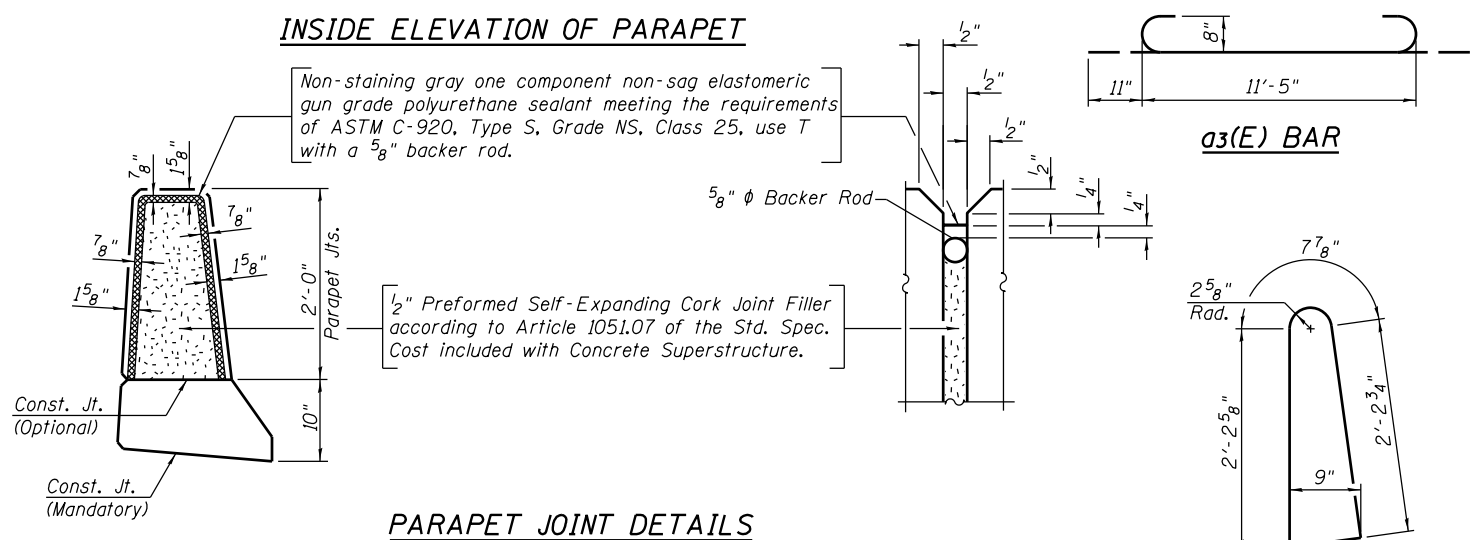


**MINIMUM BAR LAP**  
(Parapet)  
#4 bar = 2'-0"  
#8 bar = 5'-2"

**INSIDE ELEVATION OF PARAPET**



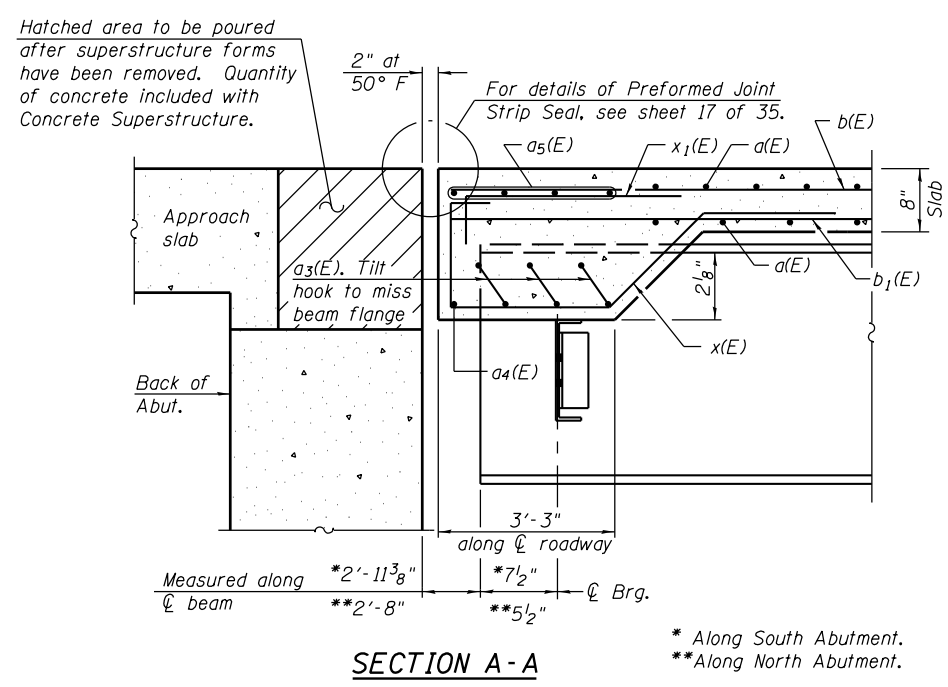
Non-staining gray one component non-sag elastomeric gun grade polyurethane sealant meeting the requirements of ASTM C-920, Type S, Grade NS, Class 25, use T with a 5/8" backer rod.

1/2" Preformed Self-Expanding Cork Joint Filler according to Article 1051.07 of the Std. Spec. Cast included with Concrete Superstructure.

**SUPERSTRUCTURE BILL OF MATERIAL**

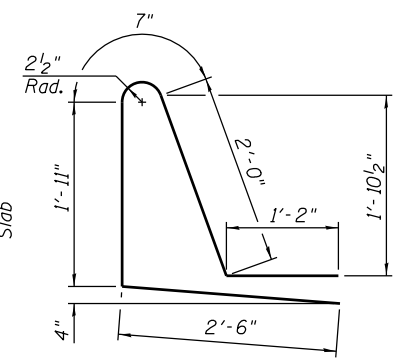
Bar	No.	Size	Length	Shape
a(E)	512	#5	39'-5"	
a2(E)	264	#6	6'-6"	
a3(E)	84	#8	13'-3"	
a4(E)	16	#8	28'-9"	
a5(E)	80	#5	21'-11"	
a6(E)	3	#5	6'-10"	
a7(E)	3	#5	6'-5"	
b(E)	345	#5	25'-8"	
b1(E)	328	#5	20'-2"	
c1(E)	144	#5	1'-7"	
c2(E)	72	#5	35'-8"	
d(E)	156	#5	5'-7"	
d1(E)	156	#5	8'-2"	
e(E)	56	#4	17'-3"	
e1(E)	6	#4	25'-0"	
e2(E)	6	#8	27'-0"	
x(E)	320	#5	7'-11"	
x1(E)	192	#5	4'-1"	
Concrete Superstructure			Cu. Yd.	260
Reinforcement Bars, Epoxy Coated			Pound	55,600

Bars indicated thus 1 x3 - #8 etc. indicates 1 line of bars with 3 lengths per line.

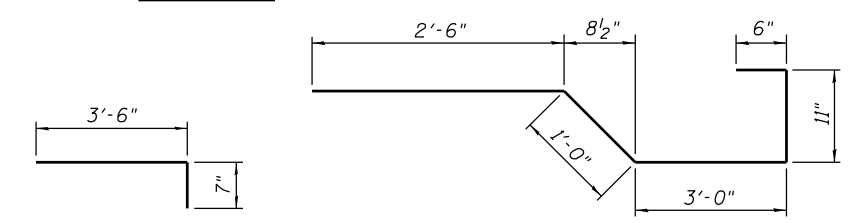


Hatched area to be poured after superstructure forms have been removed. Quantity of concrete included with Concrete Superstructure.

For details of Preformed Joint Strip Seal, see sheet 17 of 35.



**BAR d1(E)**



**BAR x1(E)**

**BAR x(E)**

FILE NAME = s:\p\16380--6395\6346\025\macro\Sh\Structure\Plans\0980015-64C17-013-SUPDET.dgn