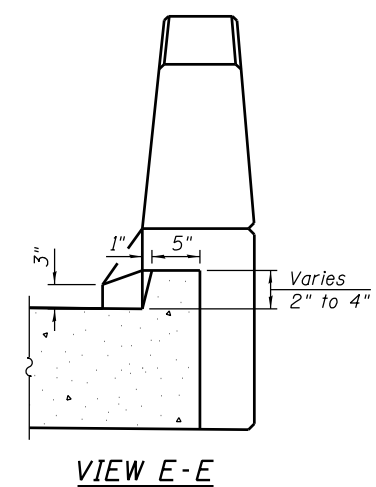
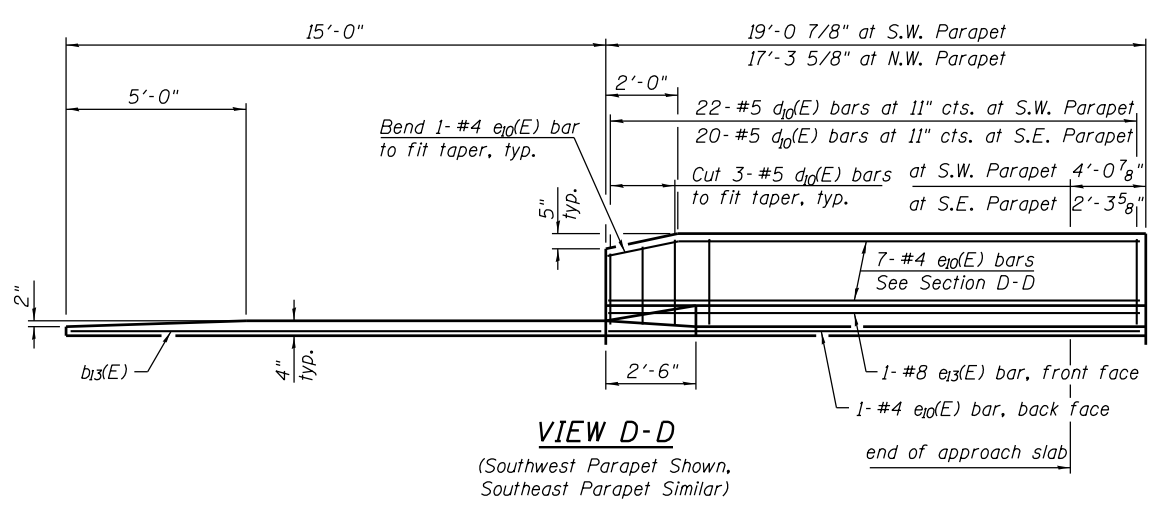
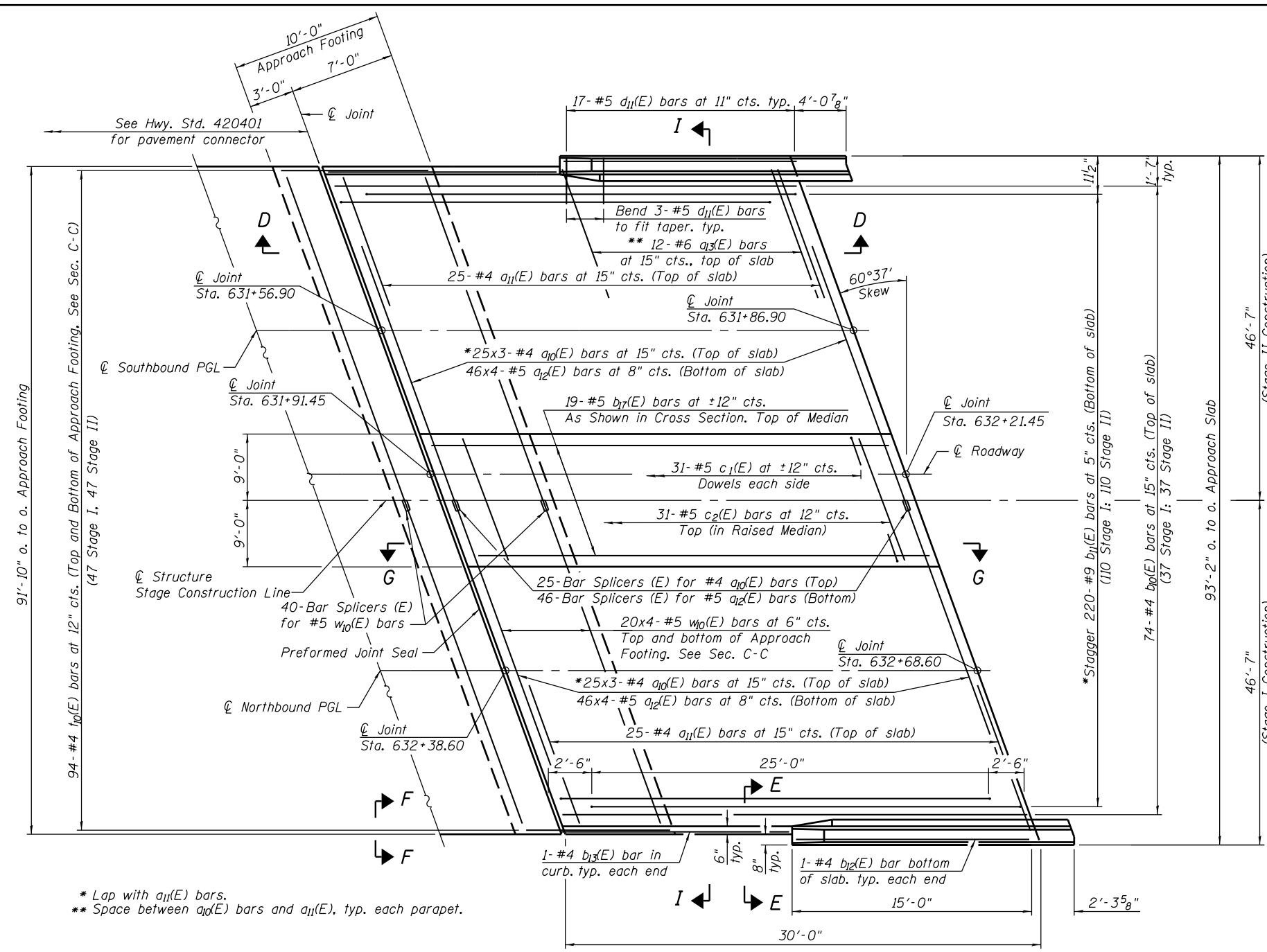


Notes:  
 See Sheet 16 of 35 for Sections G-G, H-H and I-I.  
 $a_{10}(E)$  and  $a_{11}(E)$  bar spacings measured along  $\hat{C}$  Rdwy.  
 Bars indicated thus 20x3-#5 etc. indicates 20 lines of bars with 3 lengths per line.  
 Tilt #9  $b_{11}(E)$  bars as required to maintain clearance.  
 See Sheet 14 of 35 for bar lap requirements.

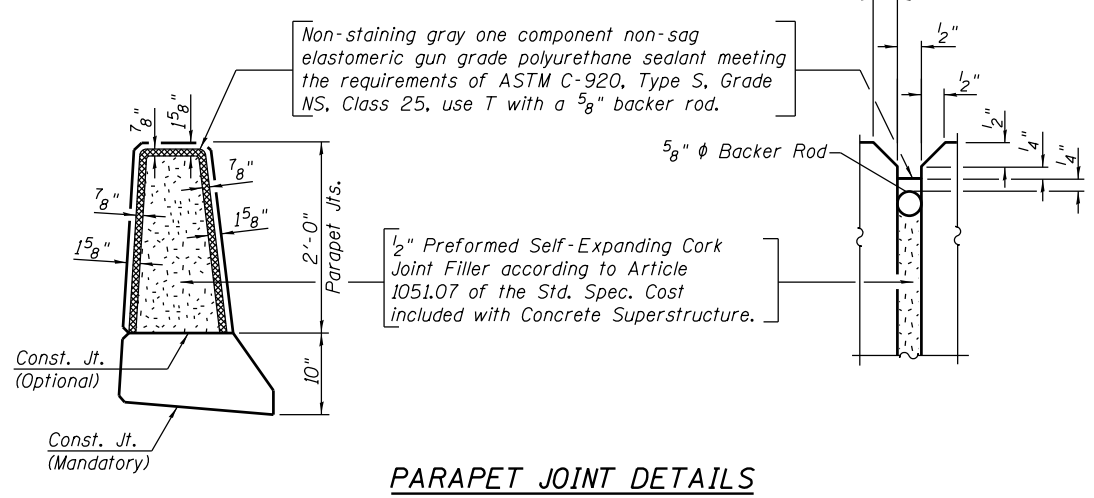
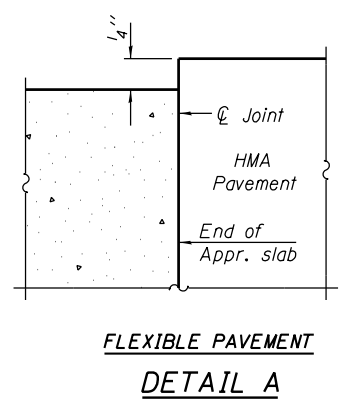


**SOUTH APPROACH  
 BILL OF MATERIAL**

Bar	No.	Size	Length	Shape
$a_{10}(E)$	150	#4	25'-6"	—
$a_{11}(E)$	50	#4	25'-11"	—
$a_{12}(E)$	368	#5	25'-9"	—
$a_{13}(E)$	24	#6	6'-6"	—
$b_{10}(E)$	74	#4	29'-8"	—
$b_{11}(E)$	220	#9	29'-9"	—
$b_{12}(E)$	2	#4	14'-8"	—
$b_{13}(E)$	2	#4	15'-10"	—
$b_{17}(E)$	19	#5	29'-8"	—
$c_1(E)$	62	#5	1'-7"	—
$c_2(E)$	31	#5	36'-4"	—
$d_{10}(E)$	42	#5	5'-7"	—
$d_{11}(E)$	34	#5	7'-11"	—
$e_{10}(E)$	16	#4	14'-8"	—
$e_{13}(E)$	2	#8	14'-8"	—
$t_{10}(E)$	188	#4	20'-0"	—
$w_{10}(E)$	320	#5	25'-6"	—
Concrete Superstructure	Cu. Yd.		176	
Concrete Structures	Cu. Yd.		58	
Reinforcement Bars, Epoxy Coated	Pound		39,950	***
Reinforcement Bars, Epoxy Coated	Pound		11,030	****

\*\*\* Included in Superstructure quantity  
 \*\*\*\* Included in Substructure quantity

**SOUTH PLAN**



FILE NAME = s:\p\16380-6395\6346\025\macro\Sh\Structural\Plans\0980015-64C17-014-BAP.dgn

1170 SOUTH HOUBOLT ROAD  
 JOLIET, ILLINOIS 60431  
 (815) 744-4200  
 STRAND ASSOCIATES IDFPN NO. 184-001273

USER NAME = brianf	DESIGNED - MJD	REVISED
PLOT SCALE =	CHECKED - AJS	REVISED
PLOT DATE = 8/14/2014	DRAWN - BJF	REVISED
	CHECKED - RRD	REVISED

STATE OF ILLINOIS  
 DEPARTMENT OF TRANSPORTATION

BRIDGE APPROACH PAVEMENT (2 OF 3)  
 STRUCTURE NO. 098-0015  
 SHEET NO. 15 OF 35 SHEETS

F.A.P. RTE.	SECTION	COUNTY	TOTAL SHEETS	SHEET NO.
646	101 BR-3	WHITESIDE	130	74
CONTRACT NO. 64C17			ILLINOIS FED. AID PROJECT	