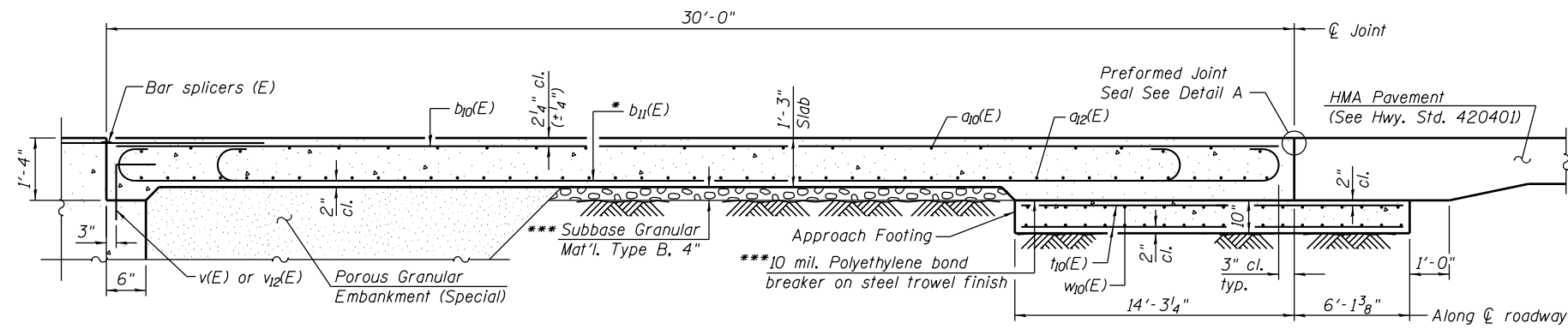
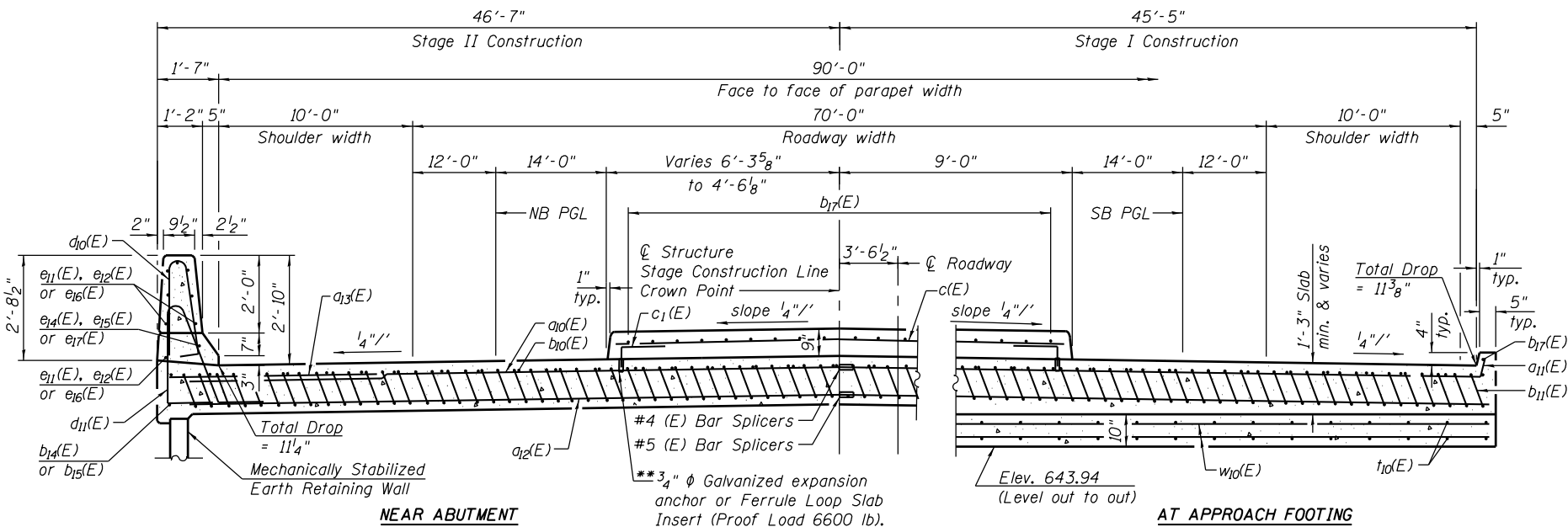
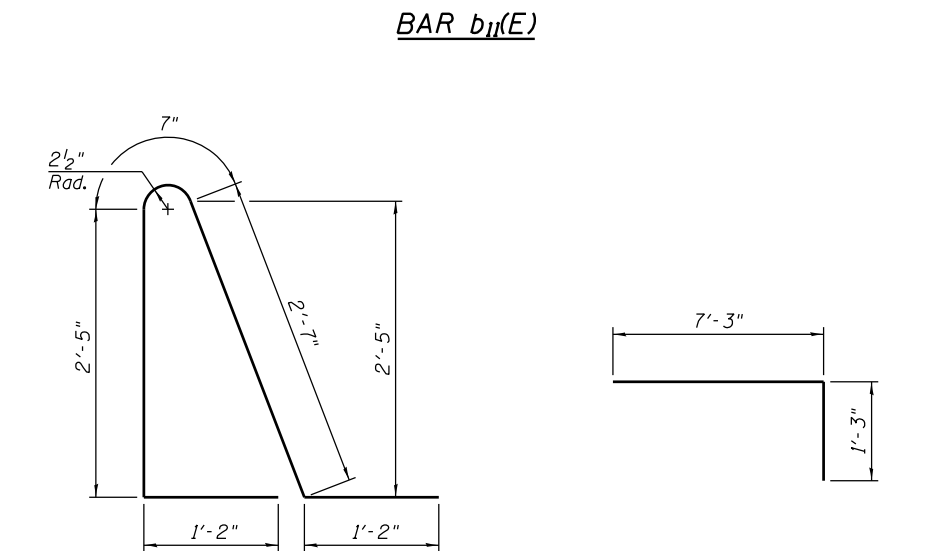
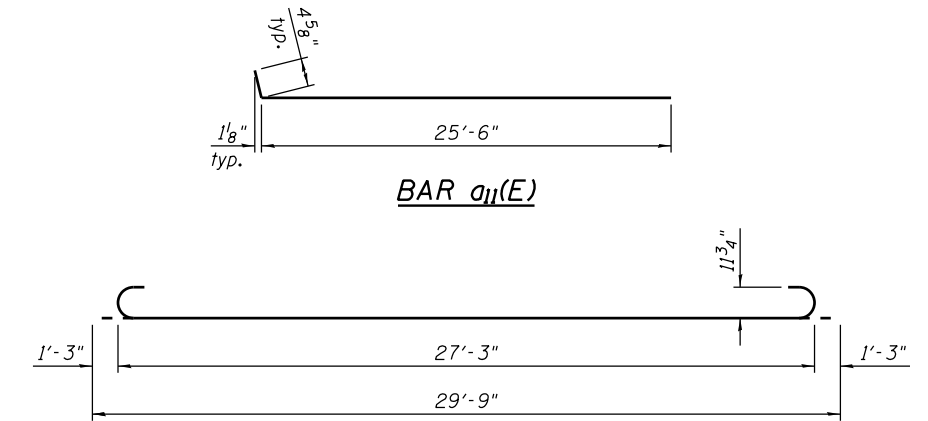


Notes:
 See Sheet 15 of 35 for Detail A.
 Approach slab and parapet concrete shall be paid for as Concrete Superstructure.
 Approach footing concrete shall be paid for as Concrete Structures.
 Reinforcement shall be paid for as Reinforcement Bars, Epoxy Coated.
 For $v_{12}(E)$ bar details, See Sheet 28 of 35.
 The approach footing maximum applied service bearing pressure (Q_{max}) = 2.0 ksf.
 For bar splicer details, See Sheet 32 of 35.
 Cost of excavation for approach footing included with Concrete Structures.
 For Porous Granular Embankment (Special) and drainage treatment details, See Sheet 28 of 35.
 For additional parapet details, See Sheet 14 and 15 of 35.
 See Sheet 13 of 35 for $d(E)$ and $c_1(E)$ bend diagrams.

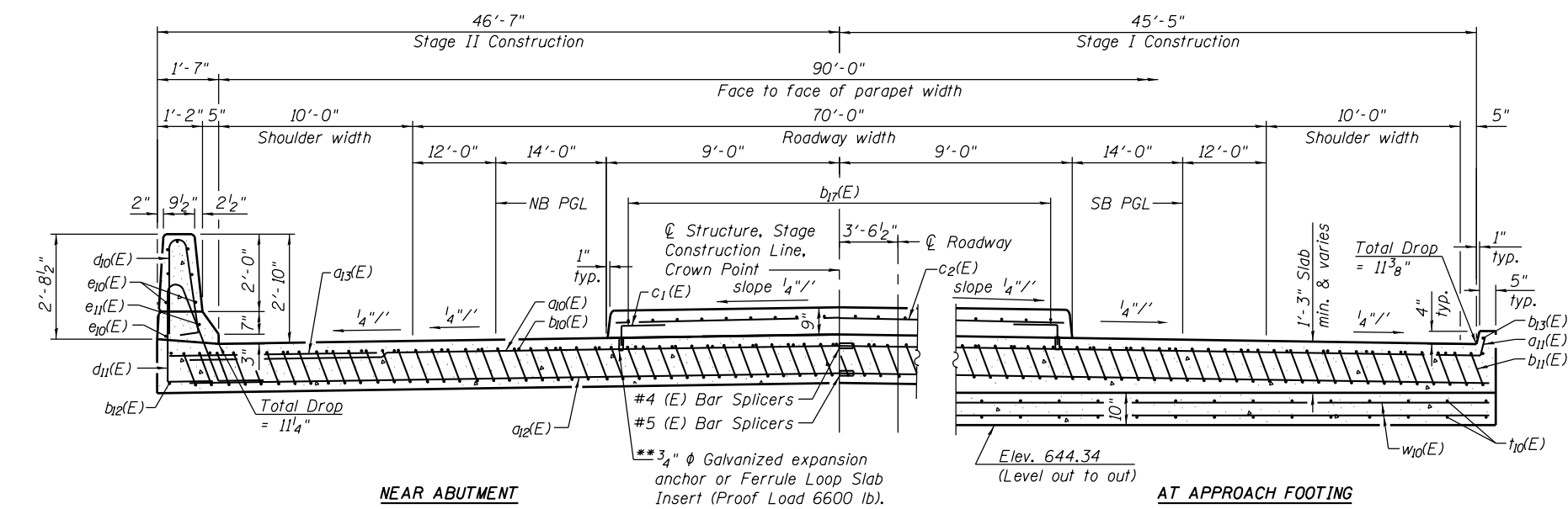


SECTION G-G



SECTION H-H

(North Approach - Looking South)



SECTION I-I

(South Approach - Looking South)

* Tilt #9 $b_{11}(E)$ bars as required to maintain clearance.
 ** The cost of expansion anchors/inserts is included in the cost of Reinforcement Bars, Epoxy Coated.
 *** Cost included with Concrete Superstructure.

FILE NAME = s:\p\16380--6395\6346\025\macro\Sh\Structural\Plans\0980015-64C17-014-BAP.dgn

1170 SOUTH HOUBOLT ROAD
 JOLIET, ILLINOIS 60431
 (815) 744-4200
 STRAND ASSOCIATES IDPR No. 184-001273

USER NAME = briantf
 DESIGNED - RRD
 CHECKED - AJS
 DRAWN - BJF
 CHECKED - RRD
 PLOT SCALE =
 PLOT DATE = 8/14/2014

DESIGNED - RRD
 CHECKED - AJS
 DRAWN - BJF
 CHECKED - RRD

REVISED
 REVISED
 REVISED
 REVISED

STATE OF ILLINOIS
 DEPARTMENT OF TRANSPORTATION

BRIDGE APPROACH PAVEMENT (3 OF 3)
 STRUCTURE NO. 098-0015
 SHEET NO. 16 OF 35 SHEETS

F.A.P. RTE.	SECTION	COUNTY	TOTAL SHEETS	SHEET NO.
646	101 BR-3	WHITESIDE	130	75
CONTRACT NO. 64C17				

ILLINOIS FED. AID PROJECT