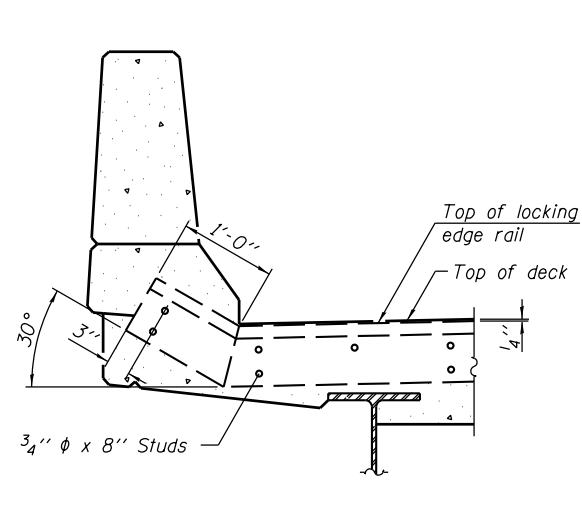
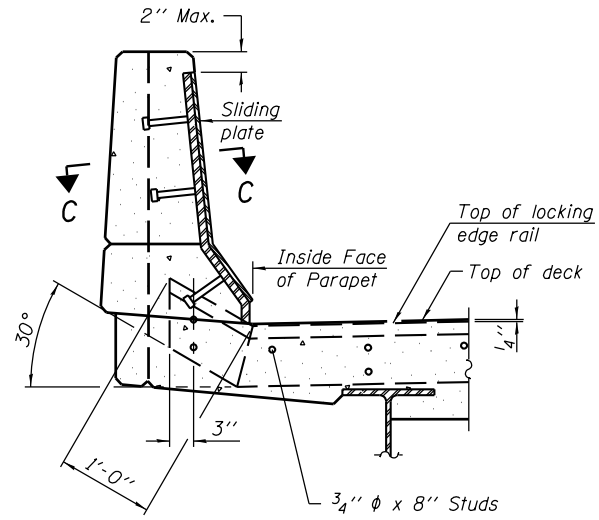


**TYPICAL END TREATMENT AT SIDEWALK OR MEDIAN**

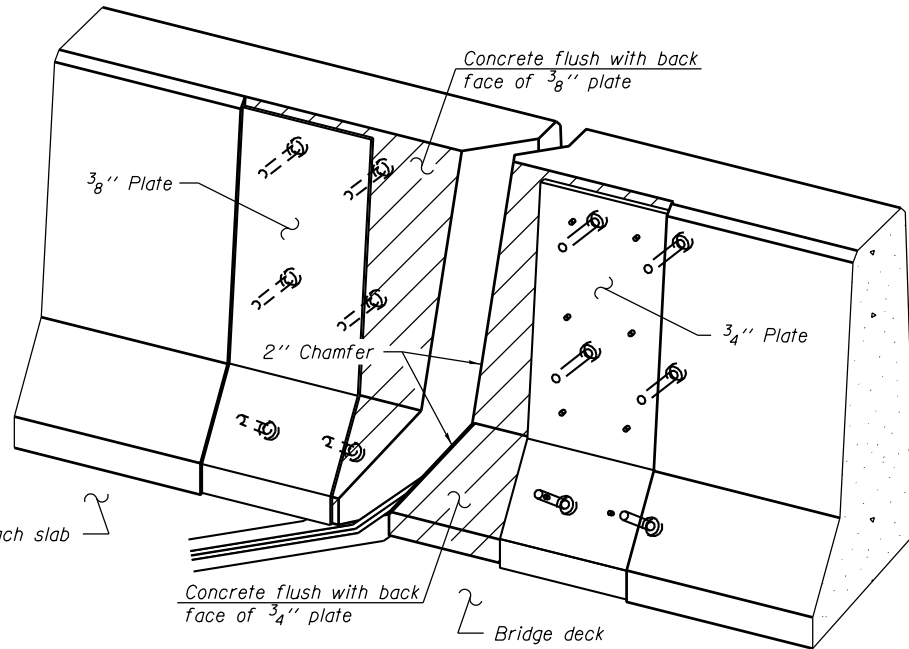
Shorter plates with a single row of studs at 12" cts. may be necessary on medians which are shallower than 9". See manufacturer's recommendation.



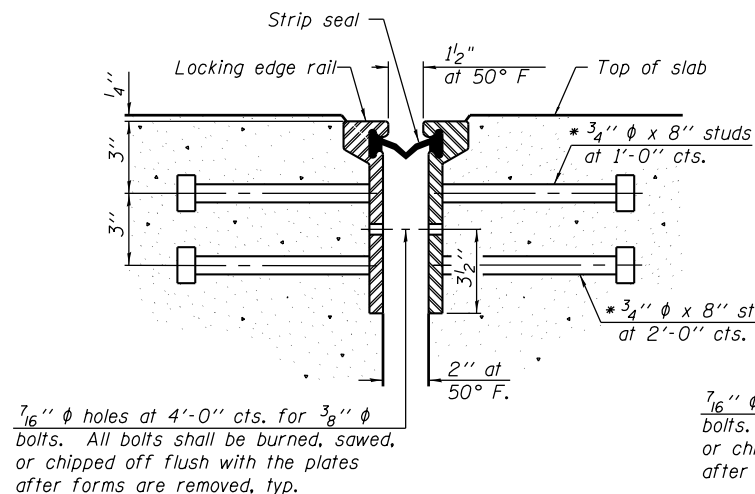
**SECTION A-A**



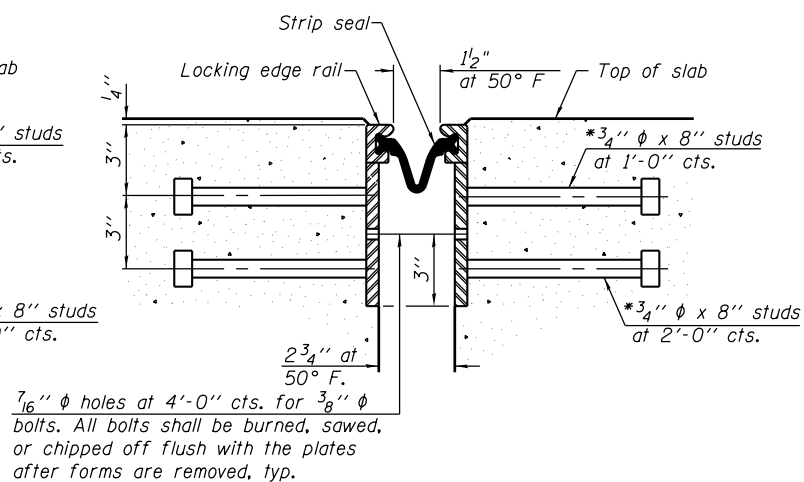
**SECTION B-B**



**TRIMETRIC VIEW (Showing back plates only)**



**SECTION THRU ROLLED RAIL JOINT**



**SECTION THRU WELDED RAIL JOINT**

\* Granular or solid flux filled headed studs conforming to Article 1006.32 of the Std. Specs., automatically end welded.

**ROLLED EXTRUDED RAIL**

**WELDED RAIL**

**LOCKING EDGE RAIL SPLICE**

The inside of the locking edge rail groove shall be free of weld residue.  
Rolled rail shown, welded rail similar.

**LOCKING EDGE RAILS**

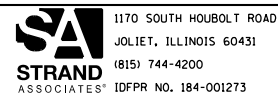
**BILL OF MATERIAL**

Item	Unit	Total
Preformed Joint Strip Seal	Foot	378

FILE NAME = s:\p\16380--6395\6346\025\macro\Sheet\Structural\Plans\0980015-64C17-017-PJS.dgn

EJ-SSJ

1-27-12



USER NAME = briantf	DESIGNED - RRD	REVISED
PLOT SCALE =	CHECKED - AJS	REVISED
PLOT DATE = 8/14/2014	DRAWN - BJF	REVISED
	CHECKED - RRD	REVISED

DESIGNED - RRD	REVISED
CHECKED - AJS	REVISED
DRAWN - BJF	REVISED
CHECKED - RRD	REVISED

**STATE OF ILLINOIS DEPARTMENT OF TRANSPORTATION**

**PREFORMED JOINT STRIP SEAL STRUCTURE NO. 098-0015**

SHEET NO. 17 OF 35 SHEETS

F.A.P. RTE. 646	SECTION 101 BR-3	COUNTY WHITESIDE	TOTAL SHEETS 130	SHEET NO. 76
CONTRACT NO. 64C17				

ILLINOIS FED. AID PROJECT