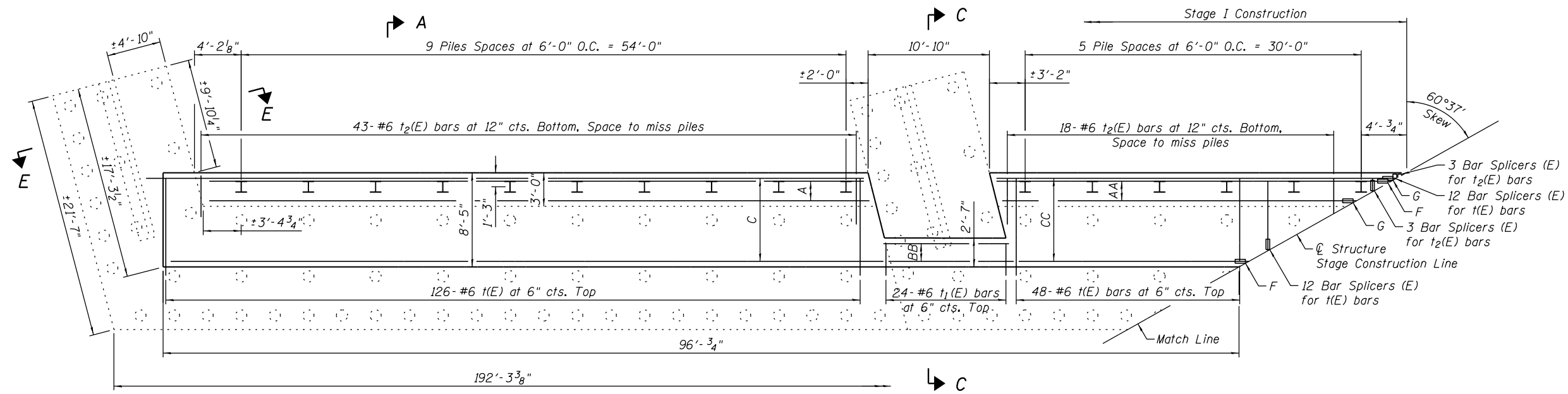


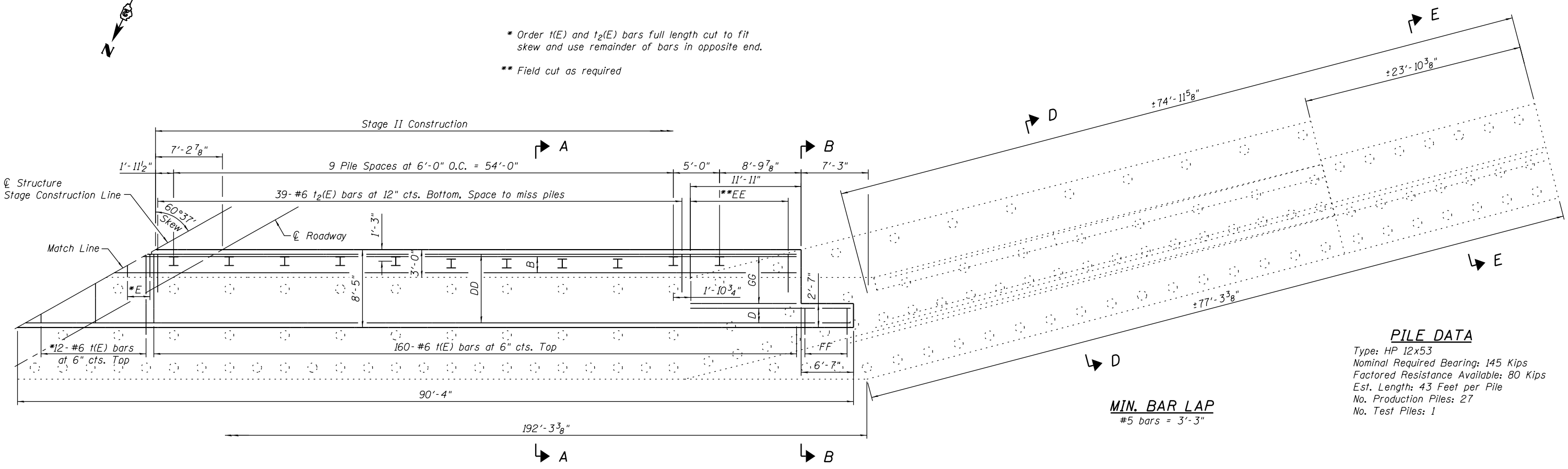
Notes:  
 See Sheet 28 of 35 for South Abutment details and Bill of Material.  
 Bar indicated thus 3x6-#5 etc. indicates 3 lines of bars 6 lengths per line. For details of Bar Splices, See Sheet 32 of 35.  
 For details of piles and concrete encasement See Sheet 30 of 35.  
 See Sheet 1 of 35 for location of overhead transmission lines. Contractor must communicate with Commonwealth Edison.



Designation	Note
A	2x2-#5 w <sub>5</sub> (E) bars at 12\" cts. Bottom
AA	2-#5 w <sub>6</sub> (E) bars at 12\" cts. Bottom
B	3x2 w <sub>7</sub> (E) bars at 12\" cts. Bottom
BB	4-#5 w(E) at 12\" cts. Top
C	10x2-#5 w <sub>1</sub> (E) bars at 12\" cts. Top. Cut in field to fit skew
D	4-#5 w <sub>3</sub> (E) bars at 12\" cts. Top
DD	10x2-#5 w <sub>4</sub> (E) bars at 12\" cts. Top
E	3-#6 t <sub>2</sub> (E) bars at 12\" cts. Bottom
EE	10-#6 t <sub>2</sub> (E) bars at 12\" cts. Bottom. Space to miss piles.
F	10 Bar Splicers (E) for w <sub>2</sub> (E) bars
FF	16-#6 t <sub>1</sub> (E) bars at 6\" cts. Top
G	2 Bar Splicers (E) for w <sub>6</sub> (E) bars
GG	6-#5 w <sub>11</sub> (E) bars at 12\" cts. Top

**SOUTH ABUTMENT FOOTING PLAN**

\* Order t(E) and t<sub>2</sub>(E) bars full length cut to fit skew and use remainder of bars in opposite end.  
 \*\* Field cut as required



**PILE DATA**  
 Type: HP 12x53  
 Nominal Required Bearing: 145 Kips  
 Factored Resistance Available: 80 Kips  
 Est. Length: 43 Feet per Pile  
 No. Production Piles: 27  
 No. Test Piles: 1

**MIN. BAR LAP**  
 #5 bars = 3'-3"

**SOUTH ABUTMENT FOOTING PLAN**

FILE NAME = s:\p\16380--6395\6346\025\macro\Sh\Structural\Plans\0980015-64C17-027-SABUT 4.dgn