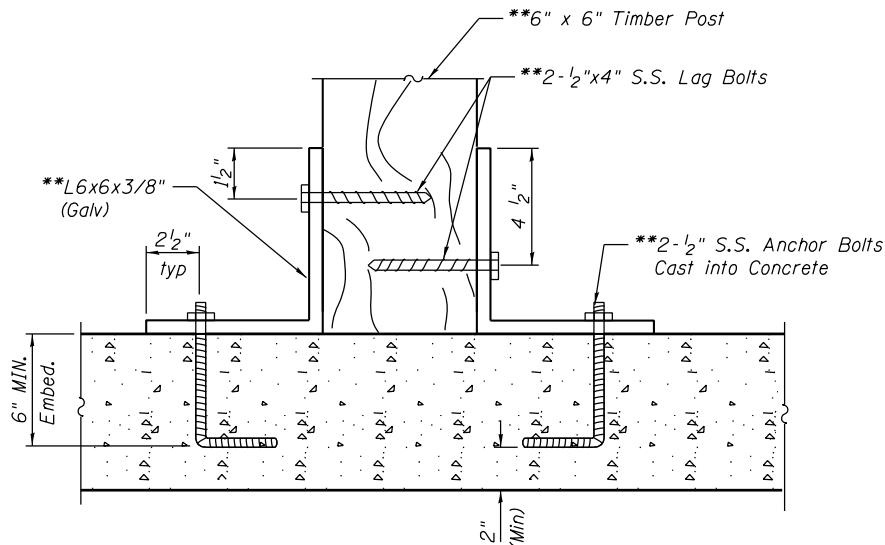


- Notes:
1. Alternate Joints in Rails by Using 8'-0" and 16'-0" Lumber.
  2. Place Bark Side Away from Post..
  3. Chamfer Rails 45° at Terminal Post.
  4. All Fence Wood to be CCA Treated PINE #2 Common or Better.
  5. The Clear Opening Between Elements Shall be such that a 6" Sphere Shall Not Pass Through the Lower 2'-3" of the Railing and a 8" Sphere Shall not Pass Through the Upper Portion of the Railing.

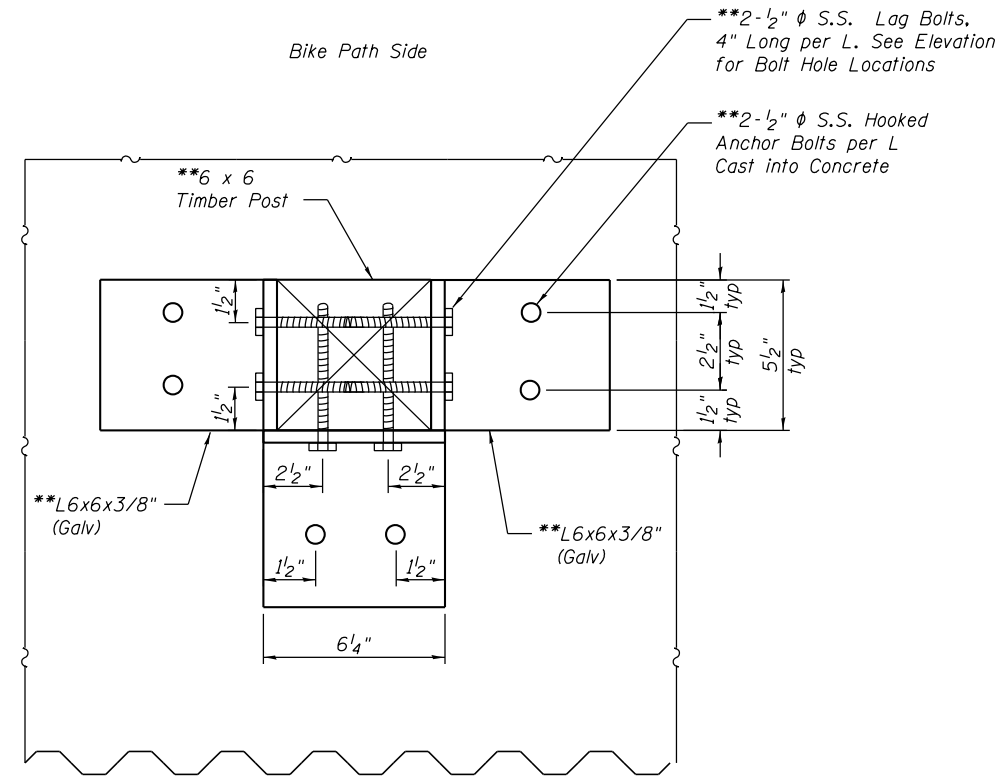
**BICYCLE RAILING, SPECIAL SECTION (TYP.)**

(See Roadway Plans for Quantities)

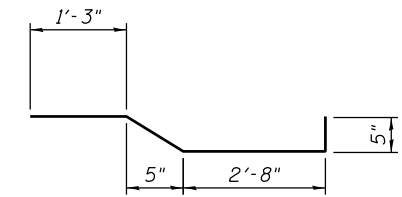


**POST MOUNTING DETAIL - SECTION VIEW**

\*\*Included in the Cost of Bicycle Railing, Special



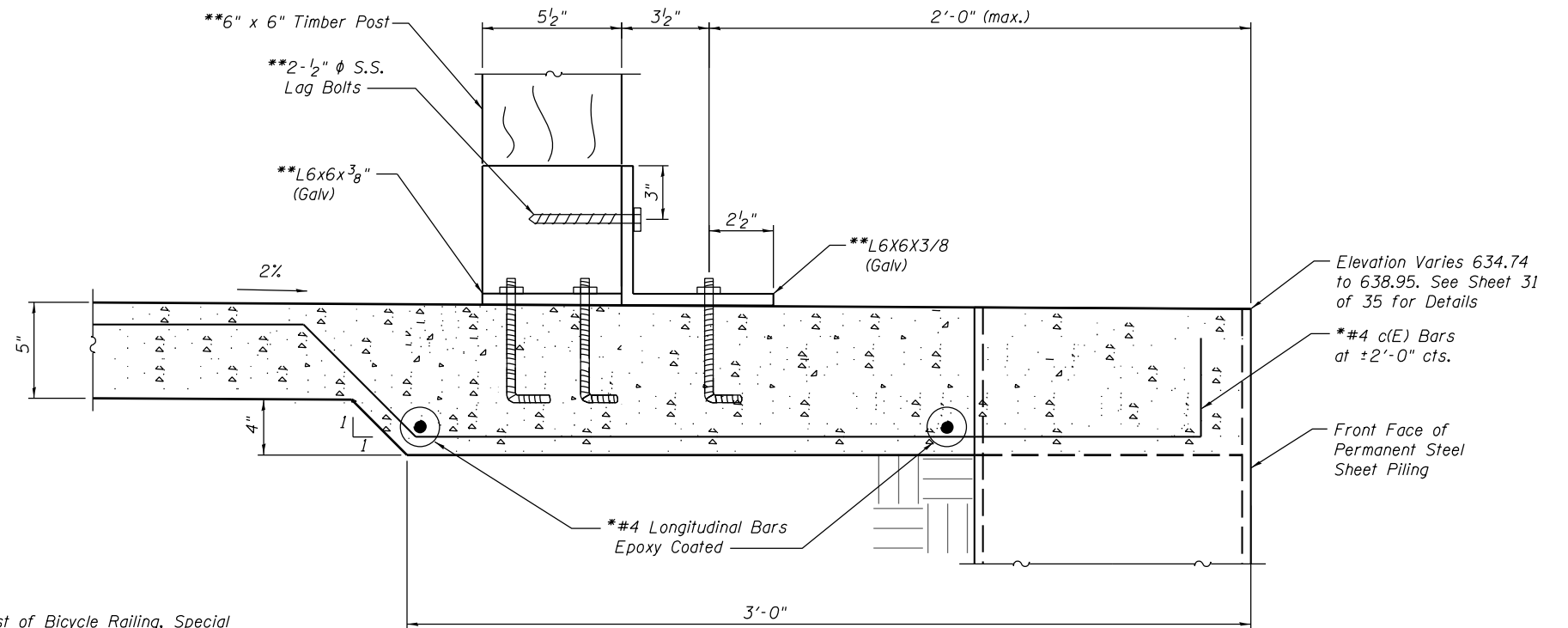
**POST MOUNTING DETAIL - PLAN VIEW**



c(E) bars

**MIN. BAR LAP**

#4 bar = 1'-3"



**POST MOUNTING DETAIL - ELEVATION VIEW**

\*\*Included in the Cost of PCC Sidewalk, 5"

Elevation Varies 634.74 to 638.95. See Sheet 31 of 35 for Details

\*#4 c(E) Bars at ±2'-0" cts.

Front Face of Permanent Steel Sheet Piling

FILE NAME = s:\p\16380--6395\6346\025\macro\Sheet\Structural\Plans\0980015-64C17-025-SP1LE2.dgn