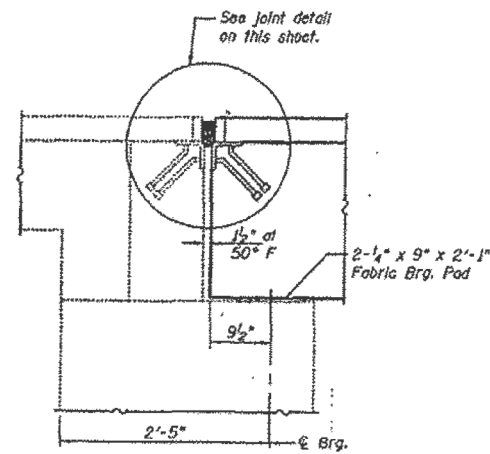


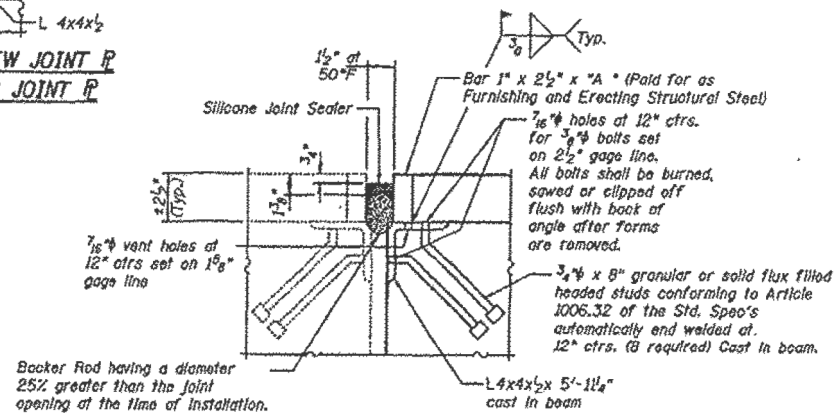
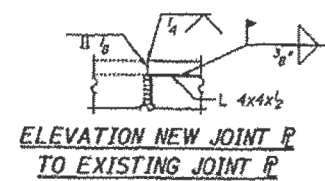
STATE OF ILLINOIS  
DEPARTMENT OF TRANSPORTATION

PROJECT NO.	SECTION	SHEET NO.	TOTAL SHEETS
646	101 BR-3	9	130

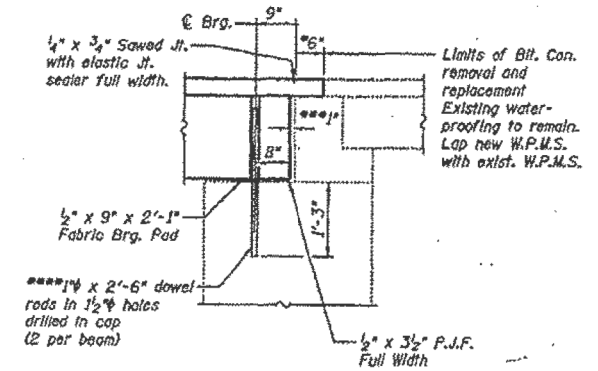
Contract Number 64C67



**TYPICAL NORTH  
ABUTMENT SECTION**  
(Dimensions at Rt. L's)



**WEST ABUTMENT JOINT DETAIL**  
(Cost Included with PPC Deck Beams, except as noted)

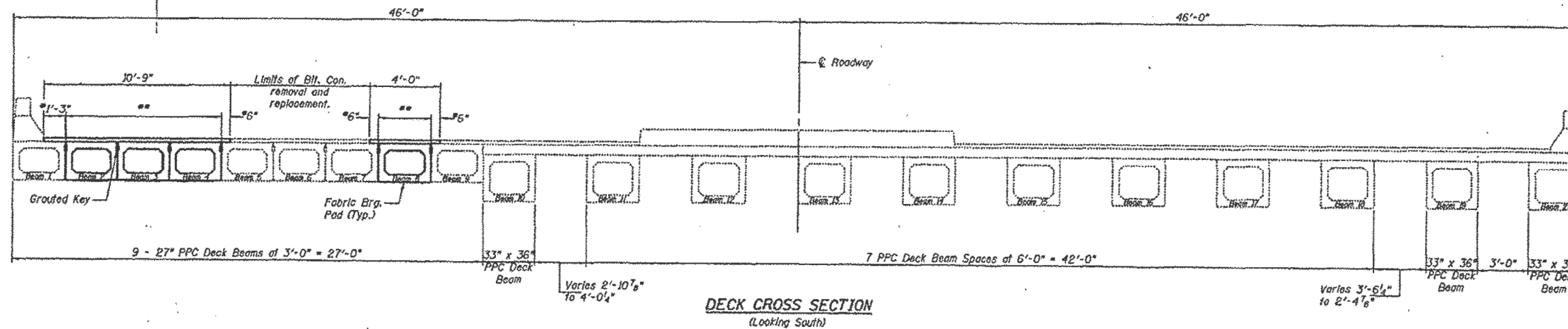


**TYPICAL SOUTH  
ABUTMENT SECTION**  
(Dimensions at Rt. L's)

\*Limits of existing waterproofing to remain. The bituminous concrete removal in these areas shall be paid for as Bituminous Concrete Surface Removal.  
\*\*Cost of removal in these areas is included with Removal of Existing PPC Deck Beams.

\*\*\*\*Existing dowel rods are to be burned off, ground flush, and coated with epoxy prior to placement of new beams. Cost included in Removal of Existing PPC Deck Beams. After beams have been erected holes shall be drilled into cap and dowel rods placed. Dowel holes shall be filled with non-shrink grout to top of beam and allowed to cure a minimum of 24 hours prior to grouting the shear keys.

\*\*\*Existing joint filler to be removed. Cost included with removal of PPC deck beams. 1" joint shall be filled with non-shrink grout. Dimension may vary to accommodate tolerance in beam lengths.



**DECK CROSS SECTION**  
(Looking South)

DESIGNED	S.J.B.
CHECKED	P.S.J.
DRAWN	Drew Christopher
CHECKED	S.J.B. P.S.J.

August 3, 2006  
 DESIGNED: *John O. Morris*  
 CHECKED: *John O. Morris*  
 DRAWN: *Drew Christopher*  
 PASSED: *Walter E. Anderson*

**JOINT AND DECK DETAILS  
IL 40 / HENNEPIN CANAL  
FEEDER CANAL BRIDGE 45  
WHITESIDE COUNTY  
SN 098-0015**

SLT-92-001-06

FOR INFORMATION ONLY

FILE NAME = s:\p\l\6300-6395\6346\025\mic-coa\Struct\Structural\Plans\0980015-64C17-034-EPLANS.dgn