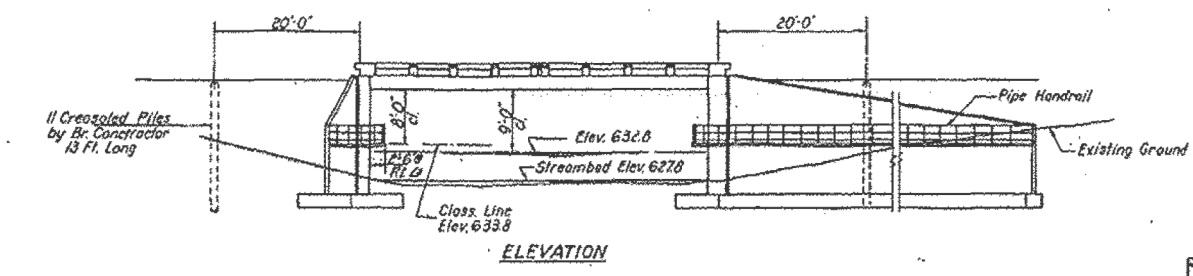


B.M.: Bronze tablet in N.W. cor. Canal Bridge
Rt. Sta. 77+48 El. 647.96
Existing Structure: 110' Through Truss & 2' x 21' I-Beam Approach,
Conc. Abut., Piers & Columns, 16'-6" Rowy width, timber floor,
to be removed by Bridge Contractor before
construction of new Bridge. No Salvage.

STATE OF ILLINOIS
DEPARTMENT OF PUBLIC WORKS & BUILDINGS
DIVISION OF HIGHWAYS

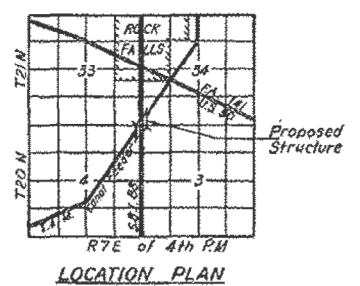
PROJECT NO.	SECTION	SHEET	TOTAL SHEETS
646	101 BR-3	31	101
PROJECT NAME: WHITESIDE			CONTRACT NO.: F-126(5)



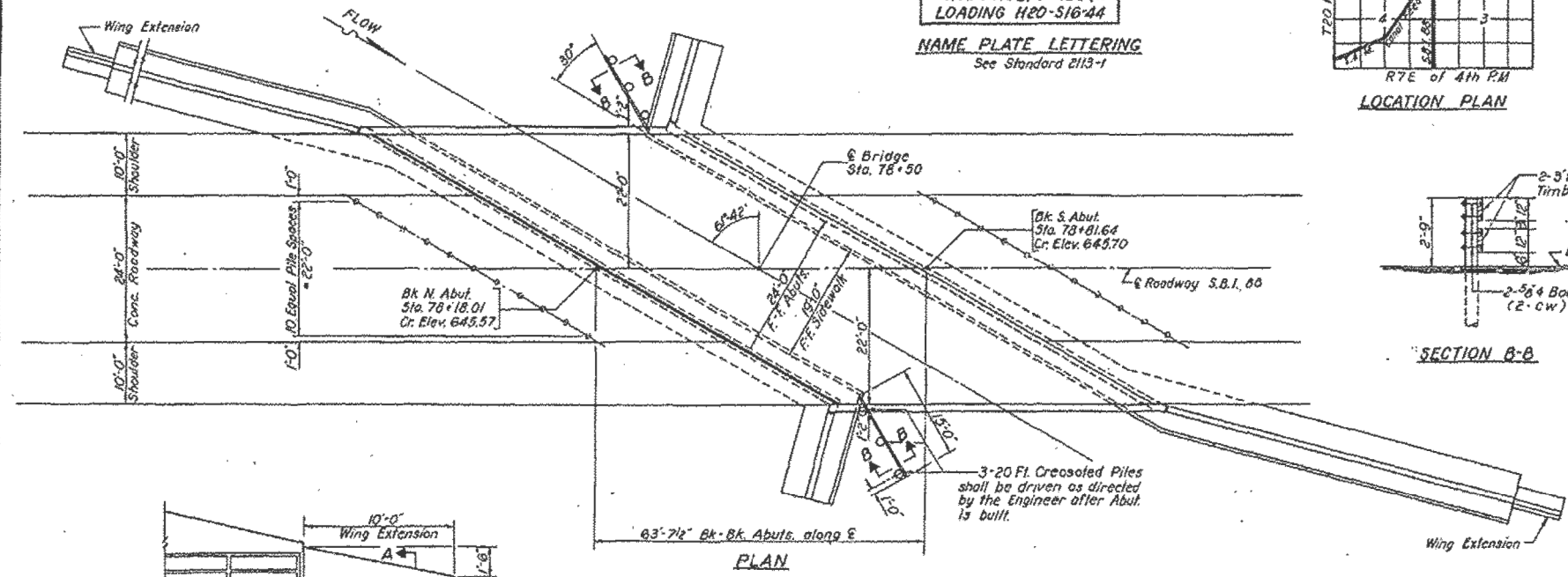
ELEVATION

STATION 78+50
BUILT 196 BY
STATE OF ILLINOIS
S.B.I. RT. 88 SEC. 101B-1
F.A. PROJ. F-126(5)
LOADING H20-S16-44

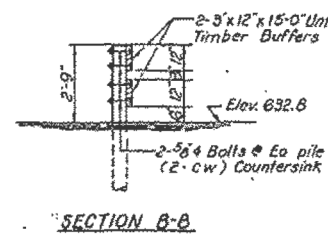
NAME PLATE LETTERING
See Standard 2113-1



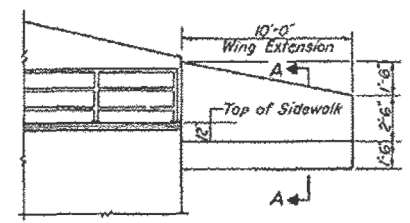
LOCATION PLAN



PLAN

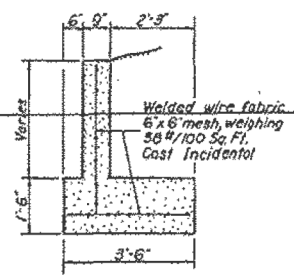


SECTION B-B

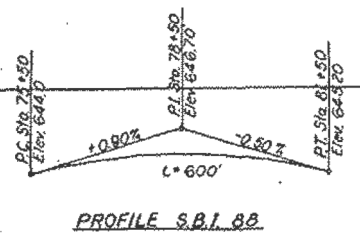


ELEVATION - WING EXTENSION

5.7 Cu. Yds. Class X Concrete included
in Substructure Quantities.



SECTION A-A



PROFILE S.B.I. 88

WATERWAY INFORMATION
Flow controlled and W.W. opening
has been determined by navigation
& recreational requirements.

DESIGN STRESSES FOR
PRESTRESSED BOX BEAMS

$f_c = 5,000$ psi.
 $f_{ci} = 4,000$ psi.
 $f_s = 248,000$ psi. (Cables 7/6)
 $f_{si} = 175,600$ psi.

DESIGN STRESSES

$f_c = 1,400$ psi. Super
 $f_c = 1,000$ psi. Sub
 $f_s = 20,000$ psi. Reinf.
 $v = 75$ psi. Ftgs.
 $n = 10$

LOADING H20-S16-44

GENERAL NOTES
The concrete floor slab shall be finished in accordance with Article 5119 of the Standard Specifications.
The sidewalk shall be finished in accordance with Article 5117 of the Standard Specifications.
The handrail concrete in the rail posts and railing shall be poured in separate operations.
All reinforcement bars shall be lapped 20 diameters unless otherwise shown.
For item "Precast Prestressed Concrete Bridge Beams" see Special Provisions.
Strand used as prestressing element shall be non-galvanized high strength, stress-relieved 7-wire strand. The nominal diameter of the strand shall not exceed 7/8" and the nominal cross-sectional area shall be 0.1089 square inch.
The horizontal exposed surfaces of the expansion guards shall be given two shop coats of red lead paint, the contact surfaces shall be given one coat of red lead paint. Anchor studs and vertical faces shall not be painted.
Expansion guards are included in quantity of Structural Steel. Estimated Weight = 2600 Lbs.
The Contractor shall drive one timber test pile in a permanent location at each abutment as directed by the Engineer before ordering the remainder of piles.
The following surfaces of the abutments shall be waterproofed; the backs of the exterior walls above the lower construction joint and the backs of the wings above the tops of the footings.
The cost of all timber buffers, connecting hardware, and luminous paint shall be included in the lump sum price bid for Timber Buffers Complete.
Permanent forms will not be permitted in forming the concrete floor.
Except as otherwise provided, all structural steel and pipe handrail shall receive one shop coat of red lead paint and two field coats of aluminum paint. See Article 56.1 to 56.5 of the Standard Specifications.

TOTAL BILL OF MATERIAL

Item	Unit	Super	Sub	Total
Removal of Existing Structures	Each			1
Class B Excavation for Structures	Cu. Yds.		930	930
Structural Steel	Lbs.	2600		2600
Precast Prestressed Concrete Bridge Beams	Lin. Ft.	454		454
Handrail Concrete	Cu. Yds.	3.1		3.1
Class X Concrete	Cu. Yds.	77.6	683.7	761.3
Reinforcement Bars	Lbs.	96,804	74,890	171,694
Untreated Piles	Lin. Ft.	3904		3904
Cressed Piles	Lin. Ft.		406	406
Test Piles (Timber)	Each		2	2
Name Plates	Each	1		1
Protective Coat	Sq. Yds.	332		332
Pipe Handrail	Lin. Ft.		380	380
Temporary Bridge Complete	Each			1
Timber Buffers Complete	Lump Sum			1.5
Preformed Joint Spaulter	Lin. Ft.	98		98

* See Sheets 9 and 10 for details of Temporary Bridge.

PROJ. F-126(5)
GENERAL PLAN & ELEVATION
ILLINOIS & MISSISSIPPI CANAL FEEDER
S.B.I. RT. 88 (FA 40) SEC. 101B-1
WHITESIDE COUNTY
STA. 78+50

DESIGNED: Walter Perry
CHECKED: J. L. Armstrong
DRAWN: J. L. Armstrong
EXAMINED: W. B. Baumann
PASSED: [Signature]
APPROVED: [Signature]

DESIGNED - RRD	REVISOR
CHECKED - AJS	REVISOR
DRAWN - BJF	REVISOR
CHECKED - RRD	REVISOR

STATE OF ILLINOIS
DEPARTMENT OF TRANSPORTATION

EXISTING GENERAL PLAN AND ELEVATION
STRUCTURE NO. 098-0015

F.A.P. RT. 646	SECTION 101 BR-3	COUNTY WHITESIDE	TOTAL SHEETS 130	SHEET NO. 101
CONTRACT NO. 64C17				

FOR INFORMATION ONLY

FILE NAME = s:\p\1\6300-6399\6346\025\mic-coa\str\structural\plans\0980015-64C17-03-1-EPLANS.dgn