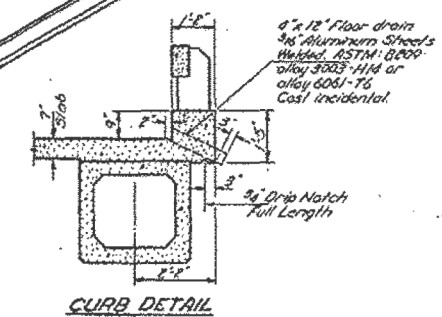
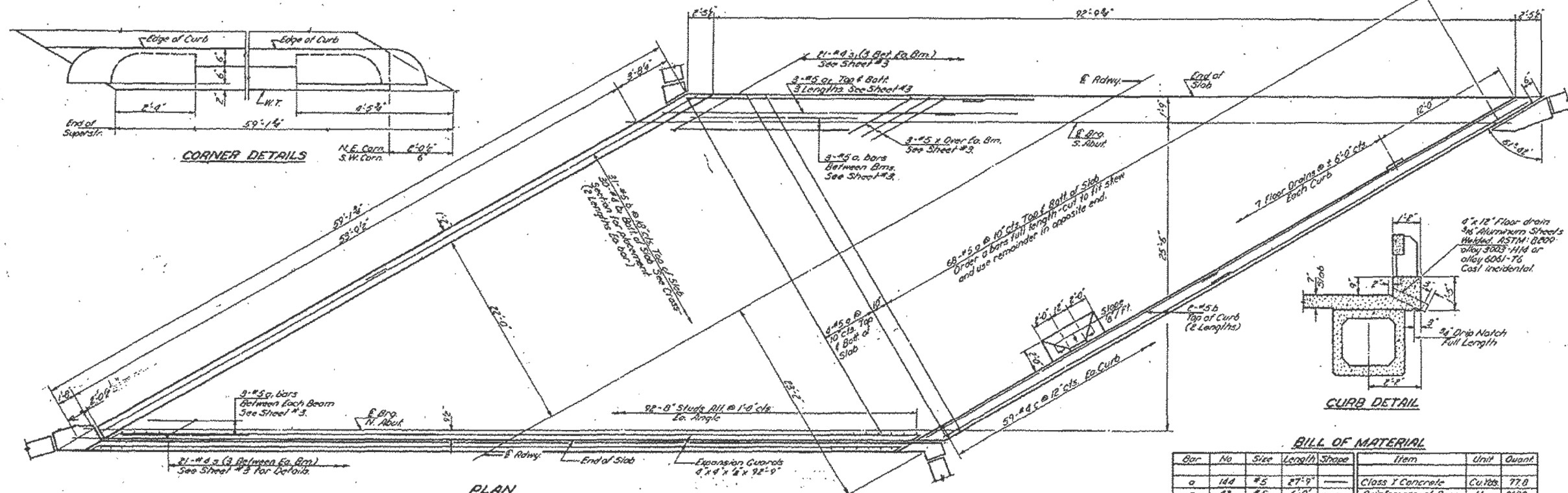
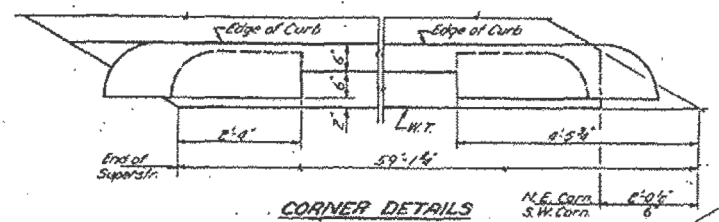
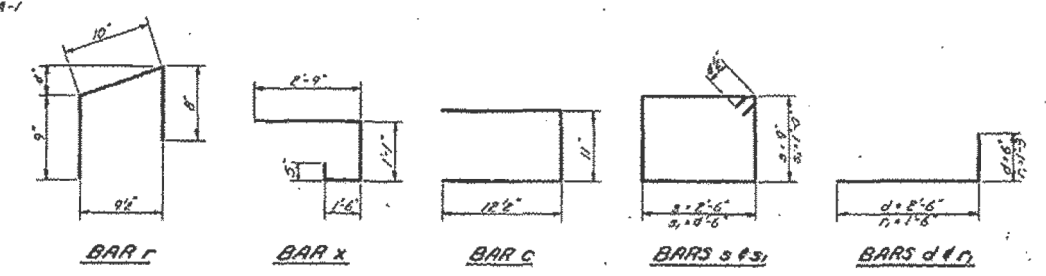
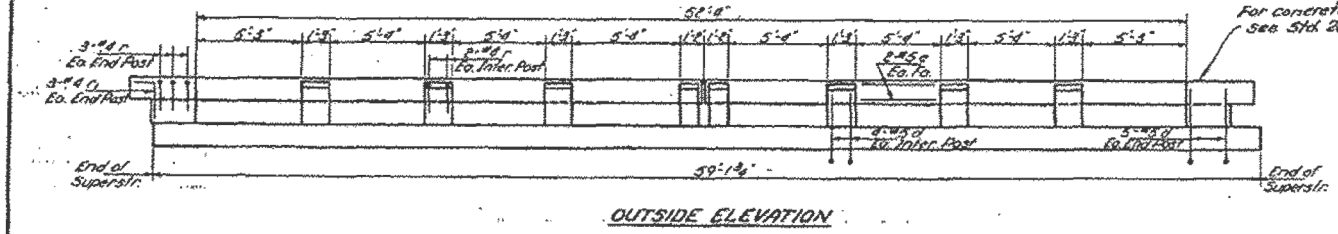


STATE OF ILLINOIS
DEPARTMENT OF PUBLIC WORKS & BUILDINGS
DIVISION OF HIGHWAYS

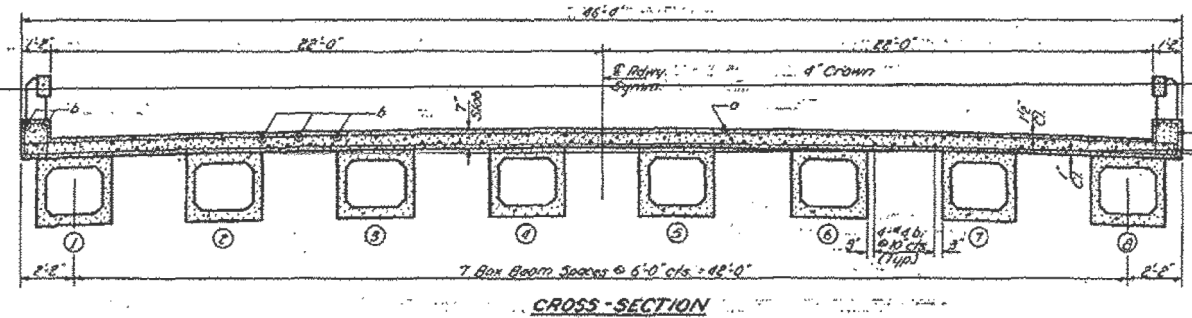
PROJECT NO.	SECTION	SHEET NO.	TOTAL SHEETS
60	101B-1	81	8

SHEET NO. 8
10 SHEETS



BILL OF MATERIAL

Bar	No	Size	Length	Shape	Item	Unit	Quant
a	144	#5	27'-9"	—	Class T Concrete	Cu Yds	77.0
a	42	#5	6'-0"	—	Reinforcement Bars	Lbs.	1680
a	18	#5	33'-6"	—	Handrail Concrete	Cu Yds	3.1
b	62	#5	30'-0"	—	Precast Prestressed Concrete Bridge Beams	Ln. Ft.	934'
b	60	#4	30'-0"	—	Structural Steel	Lbs.	2600
					Prefabricated W. Sealer	Ln. Ft.	93'
c	128	#2	3'-0"	—			
d	84	#5	3'-0"	—			
e	16	#5	29'-0"	—			
r	44	#4	2'-3"	—			
r	12	#6	2'-9"	—			
s	21	#4	7'-3"	—			
s	21	#4	11'-9"	—			
x	24	#5	5'-0"	—			



DESIGNED: *Walter Perry*
 CHECKED: *John Asmuth*
 DRAWN: *L. J. Worless*
 EXAMINED: *Jan 31 1964*
 PASSED: *H. G. Beaman*
 APPROVED: *J. E. Pfeiffer*

SUPERSTRUCTURE
S. B. T. RT. 89 - SEC. 101B-1
WHITESIDE COUNTY
STA. 7B + 50

FOR INFORMATION ONLY

FILE NAME = s:\p\1\6300-6399\6346\025\Micro\Struct\Structural\Plans\0980015-64C17-034-EPLANS.dgn