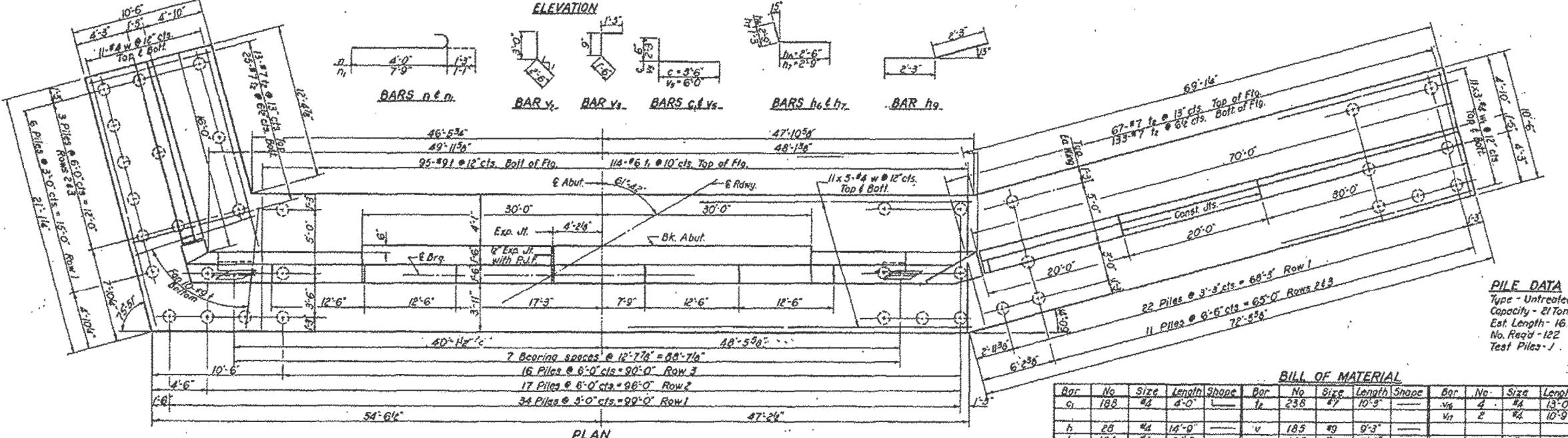
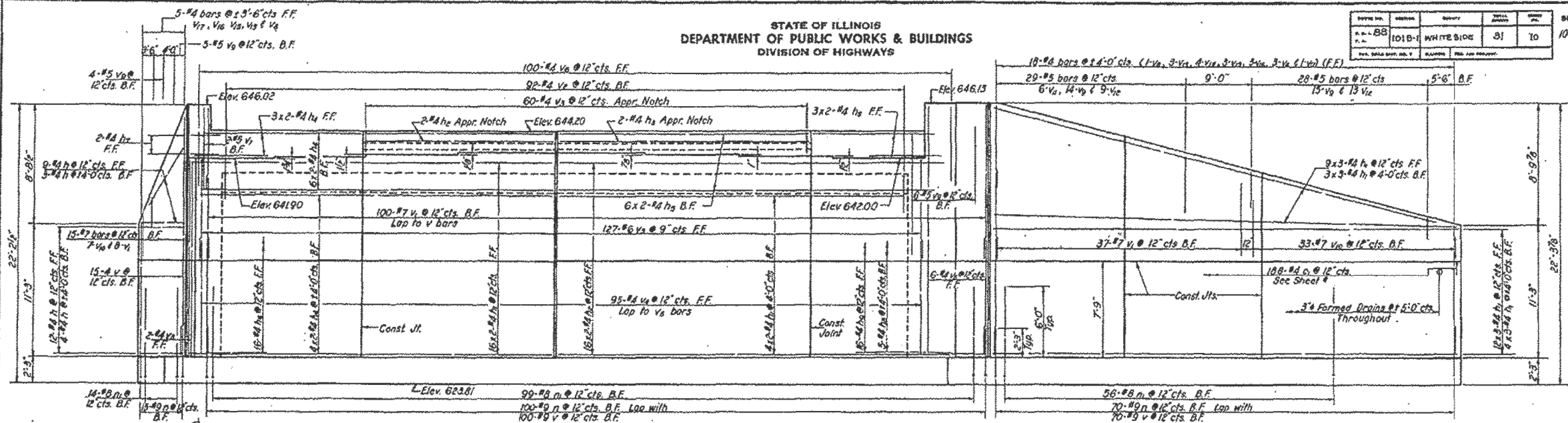


STATE OF ILLINOIS
DEPARTMENT OF PUBLIC WORKS & BUILDINGS
DIVISION OF HIGHWAYS

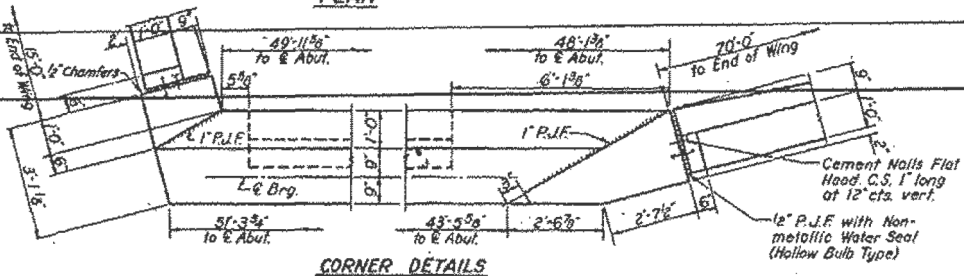
DESIGN NO.	SECTION	SHEET NO.	TOTAL SHEETS
098-0015	101B-1	31	10

SHEET NO. 4
10 SHEETS



Note: Bars indicated thus 20x3-#5 etc.
indicate 20 lines of bars with
3 lengths per line.
Min. bar laps = 20 dia.

DESIGNED	W. J. Armstrong	EXAMINED	H. G. Brown
CHECKED	J. L. Armstrong	PASSED	J. L. Armstrong
DRAWN	J. L. Armstrong	APPROVED	J. L. Armstrong
CHECKED	J. L. Armstrong		



BILL OF MATERIAL									
Bar	No	Size	Length	Slope	Bar	No	Size	Length	Slope
c1	188	#4	4'-0"		v1	238	#7	10'-3"	
h	28	#4	14'-0"		v	185	#9	9'-3"	
h1	124	#4	24'-0"		v1	145	#7	7'-6"	
h2	54	#4	23'-0"		v2	92	#4	3'-6"	
h3	2	#4	34'-0"		v3	60	#4	3'-6"	
h4	26	#4	23'-9"		v4	98	#4	11'-6"	
h5	18	#4	26'-3"		v5	127	#6	8'-4"	
h6	16	#4	5'-3"		v6	100	#4	3'-6"	
h7	2	#4	4'-0"		v7	2	#5	6'-9"	
h8	5	#4	5'-9"		v8	10	#4	19'-6"	
h9	16	#4	4'-6"		v9	44	#5	5'-0"	
n	185	#9	5'-3"		v10	40	#7	3'-3"	
v	169	#8	8'-10"		v11	6	#5	5'-9"	
w	95	#9	10'-9"		v12	22	#5	3'-0"	
x	114	#6	10'-9"		v13	4	#4	18'-0"	
					v14	4	#4	16'-3"	
					v15	4	#4	14'-6"	

PILE DATA
Type - Untreated
Capacity - 21 Tons
Est. Length - 16 Ft.
No. Req'd - 122
Test Piles - 1

SOUTH ABUTMENT
S.B.I. RT. 66 (FA.40) SEC. 101B-1
WHITESIDE COUNTY
STA. 78+50

FOR INFORMATION ONLY

FILE NAME = s:\p\1\6300-6399\6346\025\Micro\Struct\Structural\Plans\0980015-64C17-934-EPLANS.dgn