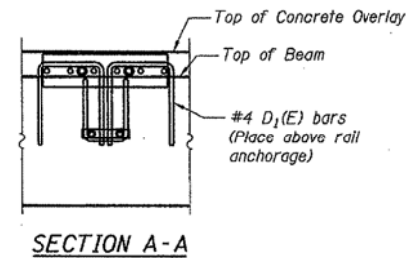
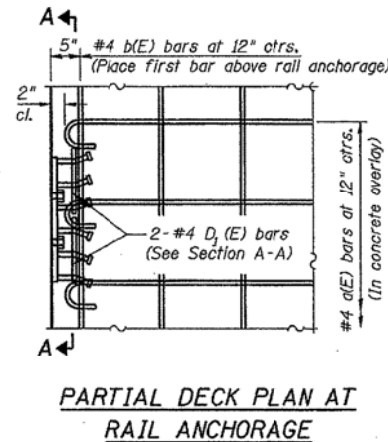
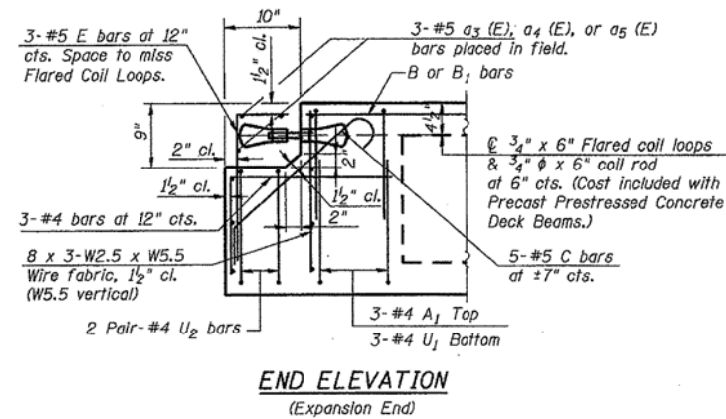
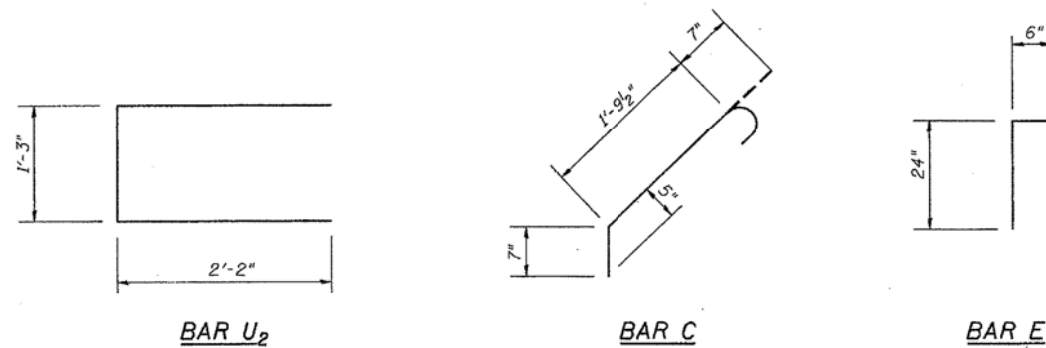
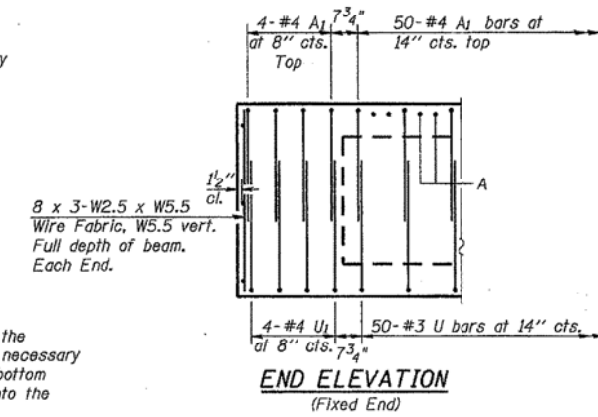


STATE OF ILLINOIS
DEPARTMENT OF TRANSPORTATION

ROUTE NO. F.A.P. 646	SECTION	COUNTY CARROLL	SHEETS 15	SHEET NO. 4 8 SHEETS
FED. ROAD DIST. NO. 7	SLURRIES	FED. AID PROJECT		



The rail anchorage shall be cast with the beam and the wearing surface shall be cast in the field. Formwork necessary for the wearing surface may be secured utilizing the bottom rail anchorage inserts and/or additional inserts cast into the beam. Drilling into the beam will not be permitted.



Note: Transverse tie rods are not required at block-out end of beams.
See sheet 3 of 8 for additional beam information.

DESIGNED	DFM
CHECKED	CH
DRAWN	MV
CHECKED	DFM

DECK BEAM DETAILS
F.A.P. 646 (IL RTE 40)
CARROLL COUNTY
STRUCTURE NO. 008-0014
SHEET 15 OF 52

FILE NAME = ... \D264DB4-SHT-ExBridge.dgn	USER NAME = SAW	DESIGNED - RAC	REVISED -
		DRAWN - SAW	REVISED -
		CHECKED - DAZ	REVISED -
		DATE - 08-08-13	REVISED -

STATE OF ILLINOIS
DEPARTMENT OF TRANSPORTATION

ZROKA
engineering

Zroka Engineering, P.C.
4216 North Hermitage
Chicago, IL 60613

EXISTING BRIDGE PLANS
FOR INFORMATION ONLY

SCALE: SHEET 2 OF 28 SHEETS STA. TO STA.

F.A.P. RTE. 646	SECTION 5 BR-3	COUNTY CARROLL	TOTAL SHEETS 84	SHEET NO. 44
			CONTRACT NO. 64DB4	
ILLINOIS FED. AID PROJECT				