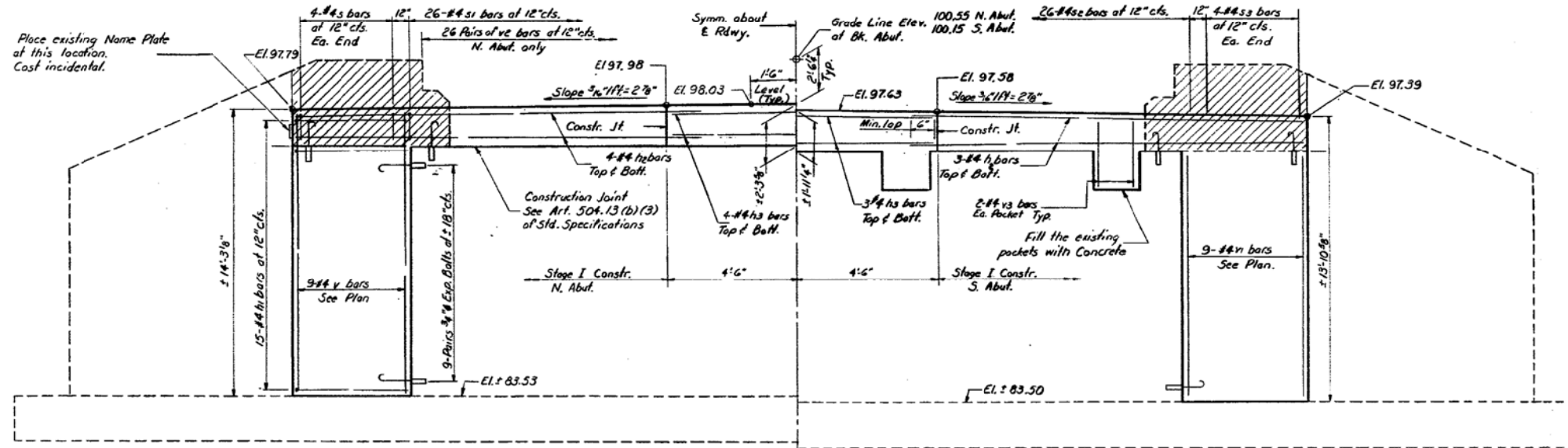


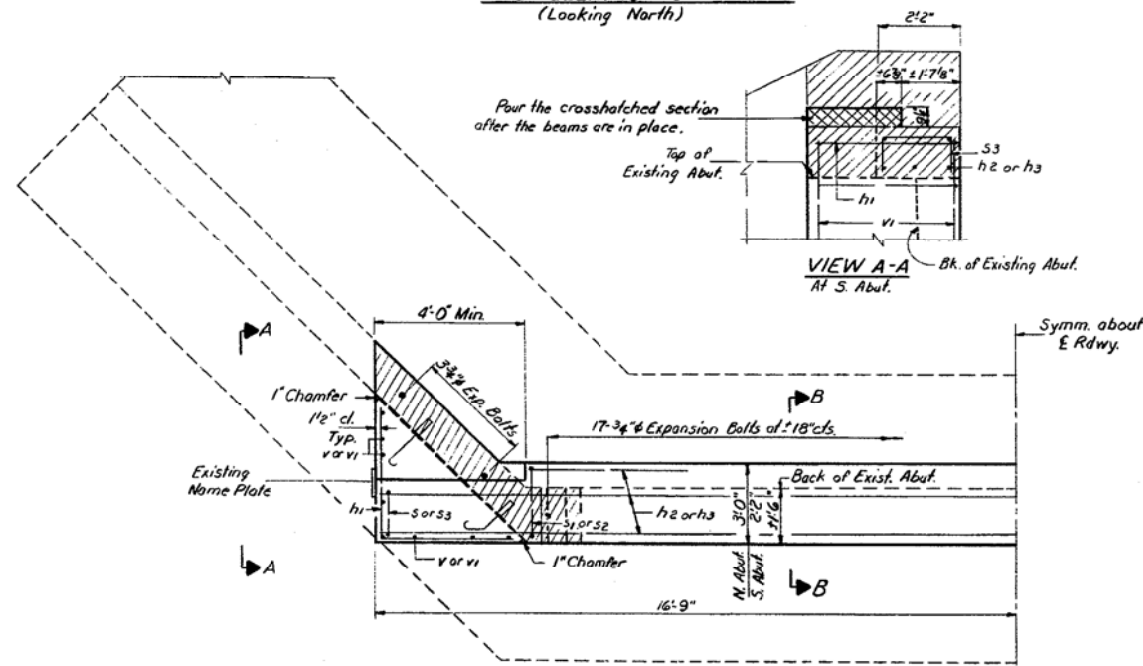
STATE OF ILLINOIS
DEPARTMENT OF PUBLIC WORKS & BUILDINGS
DIVISION OF HIGHWAYS

DATE	SECTION	EMPHY	TOTAL SHEETS	SHEET NO.
4-0	5BR-1	CARROLL	16	16
SHEET NO. 6				
6 SHEETS				

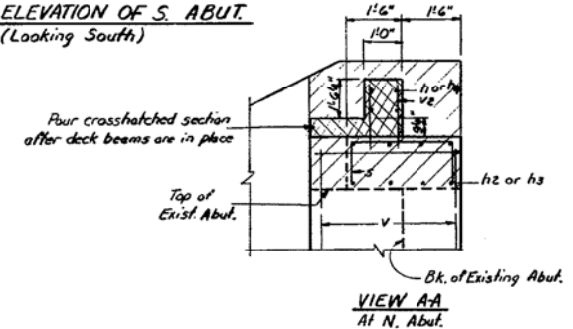


HALF ELEVATION OF N. ABUT.
(Looking North)

HALF ELEVATION OF S. ABUT.
(Looking South)

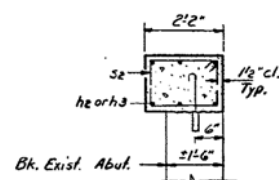


TYPICAL HALF PLAN

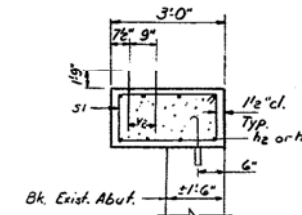


VIEW A-A
At S. Abut.

VIEW A-A
At N. Abut.



SECTION B-B
(South Abut.)



SECTION B-B
(North Abut.)

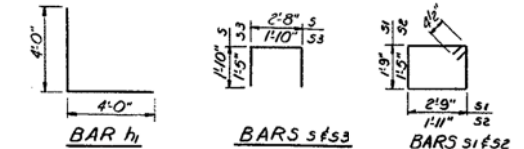
TWO ABUTMENTS
BILL OF MATERIAL

Bar	No.	Size	Length	Shape
h	5	#5	12'-7"	—
h1	60	#4	8'-0"	L
h2	14	#4	12'-7"	—
h3	14	#4	21'-1"	—
h4	5	#5	21'-1"	—
s	8	#4	2'-4"	□
s1	26	#4	9'-9"	—
s2	26	#4	7'-5"	□
s3	0	#4	4'-8"	—
v	18	#4	14'-0"	—
v1	18	#4	13'-7"	—
v2	46	#4	3'-3"	—
v3	16	#4	2'-3"	—
Class X Concrete		Cu Yds	35.4	
Reinforcement Bars		Lbs.	1420	
Expansion Bolts #4		Each	118	
Concrete Removal		Cu Yds	3.0	

ABUTMENTS
SBI. RT. 40 SEC. 5BR-1
CARROLL COUNTY
STA. 681+74

DESIGNED RAO G.K.
CHECKED D.A. Ryan
DRAWN S.E. Lindsey
CHECKED D.A. Ryan

EXAMINED
PASSED
APPROVED



Notes:
Hatched area indicates Concrete Removal. Reinforcement extending into removed area shall be cleaned and incorporated into the new construction.
Expansion bolts shall be anchored in sound concrete.
All edges shall have standard 3/4\"/>