

1-18-08 Letting, Item 072

SQUAD LEADER: FAITH DUNCAN
815-284-5364

PROJECT ENGINEER: REBECCA MARRUFFO

INDEX OF SHEETS

1	COVER SHEET
2	SUMMARY OF QUANTITIES
3	GENERAL NOTES
4,5	TYPICAL SECTIONS
6,7	SCHEDULE OF QUANTITIES
8	HORIZONTAL AND VERTICAL CONTROL
9-11	PLAN AND PROFILE
12-19	BRIDGE PLANS
20-22	EXISTING BRIDGE PLANS - INFORMATION ONLY
23,24	PERIMETER EROSION CONTROL BARRIER DETAIL
25,26	STAGING DETAILS
27	DETAIL OF HOT-MIX ASPHALT SHOULDER AT GUARDRAIL (23.4)
	DELINEATOR AND POST (37.4)
	INFORMATIONAL WARNING SIGN (39.4)
	TYPICAL BENCHING DETAIL ON EXISTING EMBANKMENT (50.4)
28	LETTERING FOR NAME PLATE (89.4)
	STOP LINE SIGN FOR TEMPORARY SIGNALS (99.4)
	EROSION CONTROL DETAILS FOR SILT FENCE (29.2)
29	WITNESS MARKER & PERMANENT SURVEY MARKERS, TYPE II (66.2)
30,31	TYPICAL PAVEMENT MARKINGS (41.1)
32-52	IL 40 CROSS SECTIONS

STATE STANDARDS

001001-01	AREAS OF REINFORCEMENT BARS
001006	DECIMAL OF AN INCH AND A FOOT
280001-04	TEMPORARY EROSION CONTROL SYSTEMS
515001-02	NAME PLATE FOR BRIDGES
630001-07	STEEL PLATE BEAM GUARDRAIL
630201-05	PCC/BITUMINOUS STABILIZATION AT STEEL PLATE BEAM GUARDRAIL
630301-04	SHOULDER WIDENING FOR TYPE 1 (SPECIAL) GUARDRAIL TERMINALS
631032-03	TRAFFIC BARRIER TERMINAL, TYPE 6A
635001	DELINEATORS
635006-02	REFLECTOR AND TERMINAL MARKER PLACEMENT
635011-01	REFLECTOR MARKER AND MOUNTING DETAILS
667101	PERMANENT SURVEY MARKERS
701006-02	TYPICAL APPLICATION OF TRAFFIC CONTROL STANDARD
701201-02	TYPICAL APPLICATION OF TRAFFIC CONTROL STANDARD
701301-02	TYPICAL APPLICATION OF TRAFFIC CONTROL STANDARD
701306-01	TYPICAL APPLICATION OF TRAFFIC CONTROL STANDARD
701311-02	TYPICAL APPLICATION OF TRAFFIC CONTROL STANDARD
701321-09	TYPICAL APPLICATION OF TRAFFIC CONTROL STANDARD
701901	TRAFFIC CONTROL DEVICES
704001-04	TEMPORARY CONCRETE BARRIER
720011	METAL POST FOR SIGNS, MARKERS AND DELINEATORS
728001	TELESCOPING STEEL SIGN SUPPORT
729001	APPLICATIONS OF TYPE A & B METAL POSTS (FOR SIGNS AND MARKERS)
780001-01	TYPICAL PAVEMENT MARKINGS
886001	DETECTOR LOOP INSTALLATIONS
886006	TYPICAL LAYOUT FOR DETECTION LOOPS

FULL SIZE PLANS HAVE BEEN PREPARED USING STANDARD ENGINEERING SCALES. REDUCED SIZED PLANS WILL NOT CONFORM TO STANDARD SCALES. IN MAKING MEASUREMENTS ON REDUCED PLANS, THE ABOVE SCALES MAY BE USED.

J.U.L.I.E.
JOINT UTILITY LOCATION INFORMATION FOR EXCAVATION
1-800-892-0123

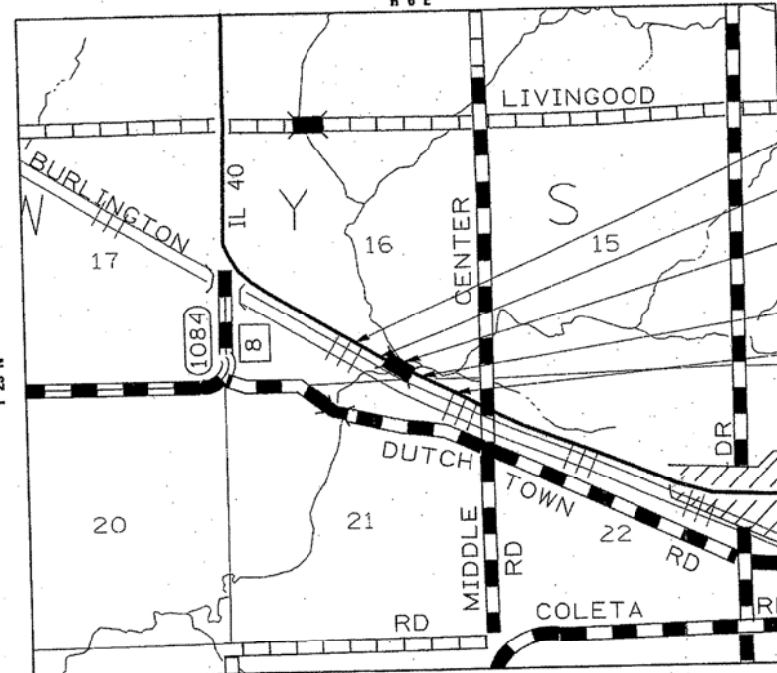
WYSEX TOWNSHIP SECTION 16, 21
CONTRACT NO. 64D29

STATE OF ILLINOIS
DEPARTMENT OF TRANSPORTATION
DIVISION OF HIGHWAYS

**PROPOSED
HIGHWAY PLANS**

FAP ROUTE 646 (IL 40)
SECTION (5BR-1)D

CARROLL COUNTY
C-92-015-08



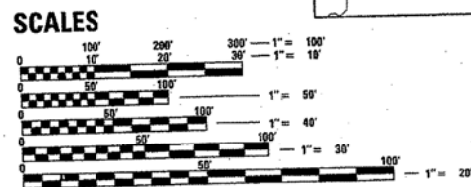
IMPROVEMENT ENDS
STA 251+79.15

SECTION ENDS
STA 249+02.71

SECTION (5BR-1)D
INCLUDES THE REMOVAL AND REPLACEMENT
OF SIX BEAMS ON THE EXISTING STRUCTURE
SN-008-0014 OVER OTTER CREEK.

SECTION BEGINS
STA 247+39.04

IMPROVEMENT BEGINS
STA 243+54.27



GROSS LENGTH OF PROJECT = 824.88 LIN FT = 0.15 MI
NET LENGTH OF PROJECT = 824.88 LIN FT = 0.15 MI

CONTRACT NO. 64D29				
F.A.P. RTE.	SECTION	COUNTY	TOTAL SHEETS	SHEET NO.
646	(5BR-1)D	CARROLL	52	1



STATE OF ILLINOIS
DEPARTMENT OF TRANSPORTATION
DIVISION OF HIGHWAYS

SUBMITTED: _____ 20 _____

Angie E. Ryan
DEPUTY DIRECTOR OF HIGHWAYS, REGION ENGINEER

December 7, 20 07

Eric E. Harms
ENGINEER OF DESIGN AND ENVIRONMENT

December 7, 20 07

Christine M. Reed
DIRECTOR OF HIGHWAYS, CHIEF ENGINEER

**PRINTED BY THE AUTHORITY
OF THE STATE OF ILLINOIS**

**REGION 2, DISTRICT 2
DIXON**

FAP ROUTE 646 (IL 40) SECTION (5BR-1)D CARROLL COUNTY CONTRACT NO. 64D29

FILE NAME = ... \D264D84-SHT-ExBr-ridge.dgn

USER NAME = SAW	DESIGNED - RAC	REVISED -
PLOT SCALE = 40.0000' / in.	DRAWN - SAW	REVISED -
PLOT DATE = 8/1/2013	CHECKED - DAZ	REVISED -
	DATE - 08-08-13	REVISED -

STATE OF ILLINOIS
DEPARTMENT OF TRANSPORTATION

ZROKA
engineering

Zzoka Engineering, P.C.
4216 North Hermitage
Chicago, IL 60613

EXISTING BRIDGE PLANS
FOR INFORMATION ONLY

SCALE: SHEET 22 OF 28 SHEETS STA. TO STA.

F.A.P. RTE.	SECTION	COUNTY	TOTAL SHEETS	SHEET NO.
646	5 BR-3	CARROLL	84	64
				CONTRACT NO. 64D84

ILLINOIS FED. AID PROJECT