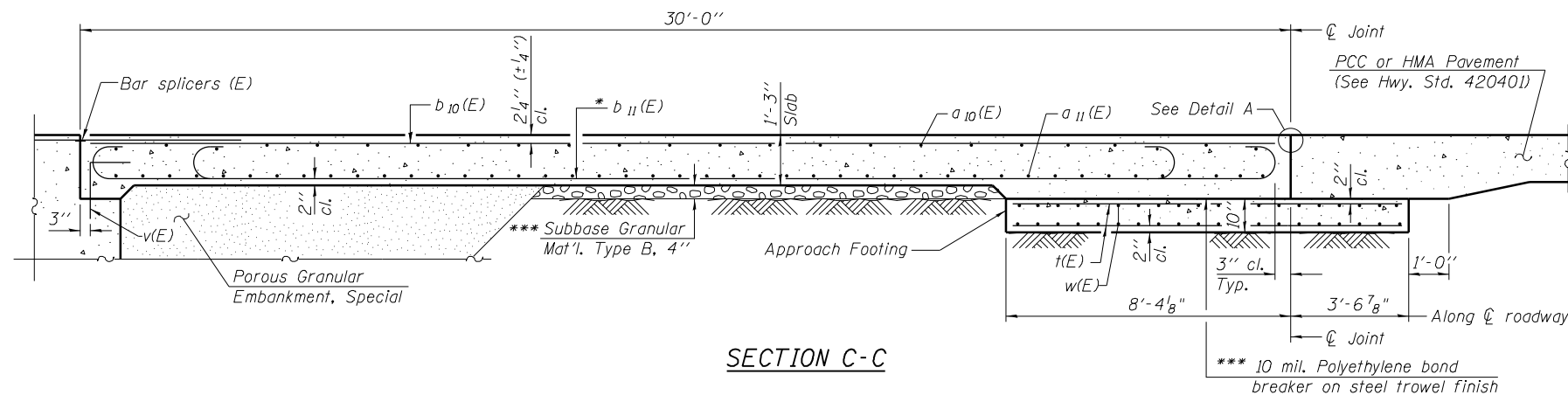
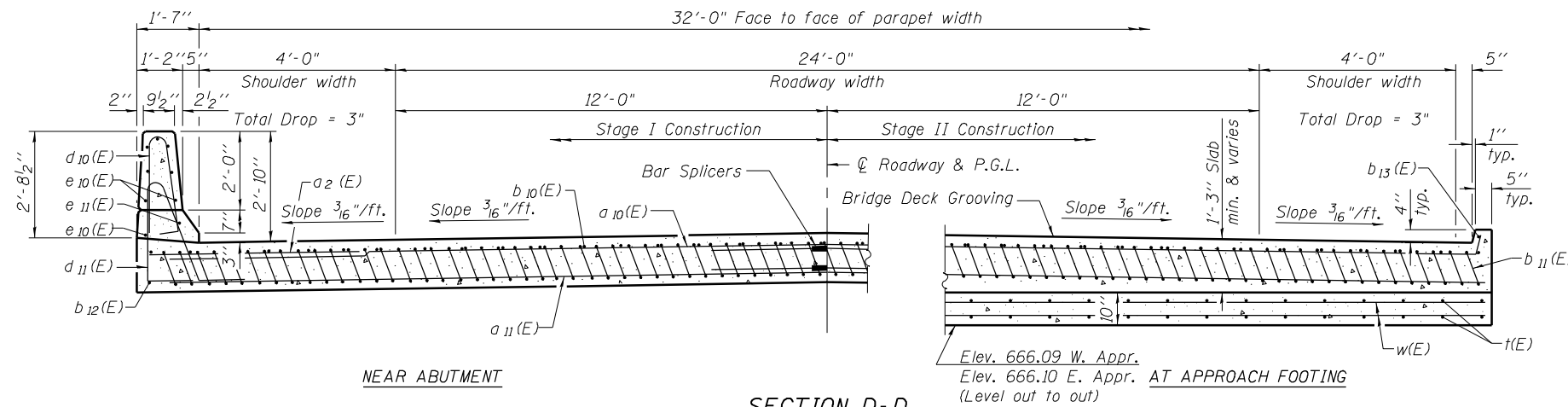


Notes:
 See sheet S12 of S26 for Detail A.
 Approach slab and parapet concrete shall be paid for as Concrete Superstructure.
 Approach footing concrete shall be paid for as Concrete Structures.
 Reinforcement shall be paid for as Reinforcement Bars, Epoxy Coated.
 For v(E) bar details, see sheet S9 and S10 of S26.
 The approach footing maximum applied service bearing pressure (Q_{max}) = 2.0 ksf.
 For bar splicer details, see sheet S22 of S26.
 Cost of excavation for approach footing included with Concrete Structures.
 For Porous Granular Embankment, Special and drainage treatment details, see sheet S2 of S26.
 For additional parapet details, see sheet S11 of S26.

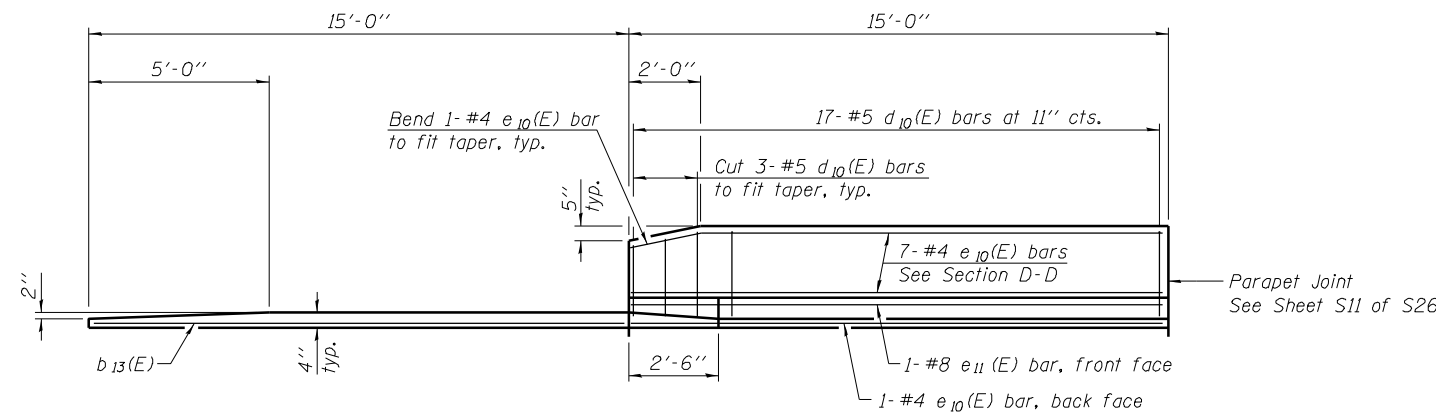


SECTION C-C

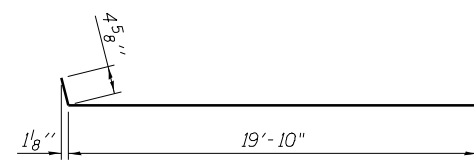


SECTION D-D

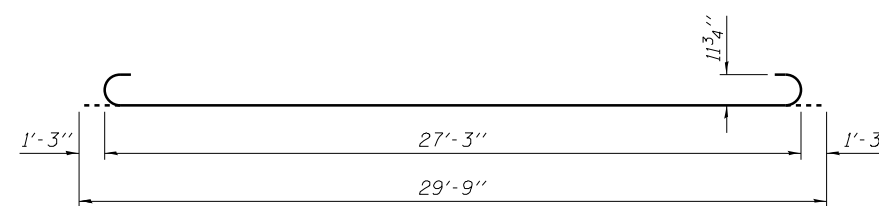
(See Plan for dimensions not shown)



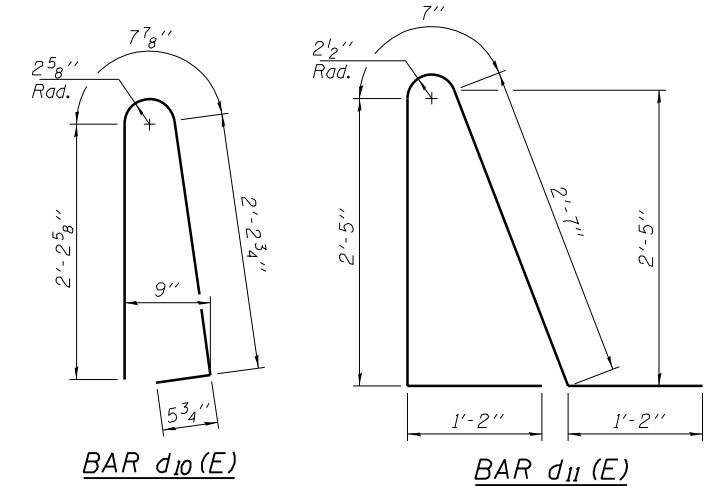
VIEW E-E



BAR a10(E)



BAR b11(E)



BAR d10(E)

BAR d11(E)

* Tilt #9 b11(E) bars as required to maintain clearance.
 *** Cost included with Concrete Superstructure.

TWO APPROACHES
 BILL OF MATERIAL

Bar	No.	Size	Length	Shape
a2(E)	48	#6	6'-6"	U
a10(E)	100	#4	20'-3"	—
a11(E)	184	#5	19'-10"	—
b10(E)	56	#4	29'-8"	—
b11(E)	160	#9	29'-9"	C
b12(E)	4	#4	14'-8"	—
b13(E)	4	#4	14'-6"	—
d10(E)	68	#5	5'-7"	A
d11(E)	68	#5	7'-11"	A
e10(E)	32	#4	14'-8"	—
e11(E)	4	#8	14'-8"	—
t(E)	144	#4	11'-7"	—
w(E)	160	#5	19'-10"	—
Concrete Superstructure		Cu. Yd.	108.6	
Concrete Structures		Cu. Yd.	25.0	
Reinforcement Bars, Epoxy Coated		Pound	28860	

FILENAME: F:\3-1308 IDD\Dist\3-1308B\US34C\Submittals\Comments\2014 BP 11 BBS Comments Response\CAD Files\0052140-66A17-013-Appr-Slab.dgn
 BLOOM COMPANIES, LLC
 Infrastructure Division and Specialty
 600 W. Fulton Street, Suite 701 • Chicago, IL 60661
 Phone: (312) 876-9800 Fax: (312) 876-9800