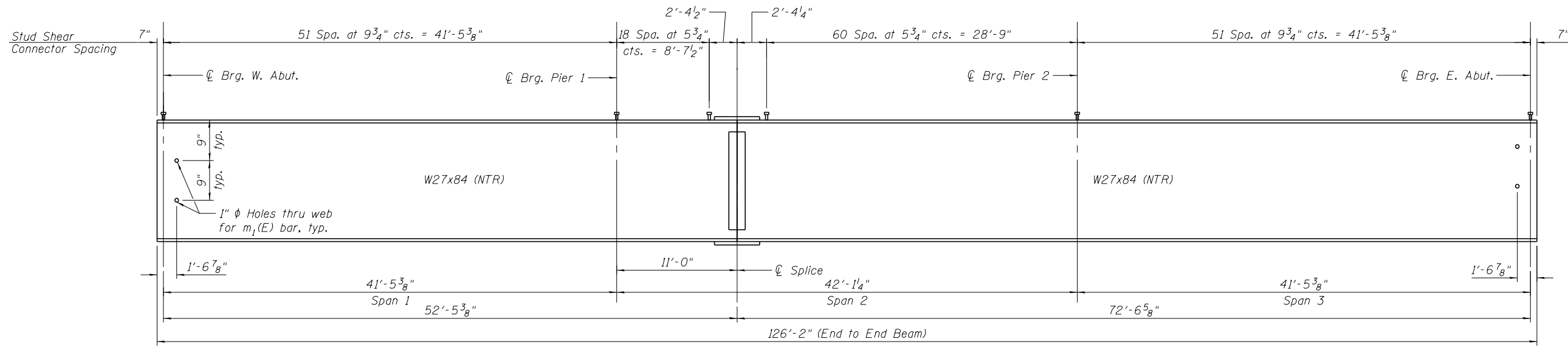


**FRAMING PLAN**

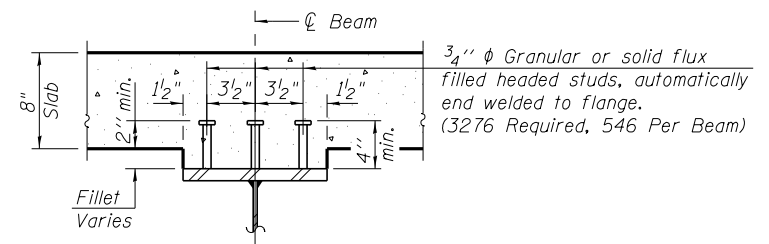


**BEAM ELEVATION**

**TOP OF BEAM ELEVATIONS**  
(For fabrication only)

Beam	℄ Brg. W. Abut.	℄ Pier 1	℄ Field Splice	℄ Pier 2	℄ Brg. E. Abut.
1	667.77	667.81	667.82	667.85	667.89
2	667.89	667.91	667.92	667.94	667.96
3	668.01	668.02	668.02	668.02	668.03
4	668.03	668.02	668.02	668.02	668.01
5	667.96	667.94	667.93	667.91	667.89
6	667.89	667.85	667.84	667.81	667.77

Notes:  
 All diaphragms shall be installed as steel is erected and secured with erection pins and bolts except as otherwise noted. Individual diaphragms at supports may be temporarily disconnected to install bearing anchor rods.  
 Load carrying components designated "NTR" shall conform to the Impact Testing Requirement, Zone 2.  
 All steel members including primary members, diaphragms, and connecting angles shall be AASHTO M270 Grade 50W.



**SECTION A-A**

FILENAME: c:\pwworkspace\carpenterj\job\044492\08660149\_66A17-014\_FramingPlan.dgn



USER NAME = carpenterj	DESIGNED - KO	REVISED
PLOT SCALE = N/A	CHECKED - BCM	REVISED
PLOT DATE = 8/1/2014	DRAWN - KO	REVISED
	CHECKED - 7/25/2012	REVISED

**STATE OF ILLINOIS**  
**DEPARTMENT OF TRANSPORTATION**

**FRAMING PLAN**  
**STRUCTURE NO. 006-0140**  
SHEET NO. S14 OF S26 SHEETS

F.A.P. RTE.	SECTION	COUNTY	TOTAL SHEETS	SHEET NO.
613	(8D-BR) BR	BUREAU	63	36
CONTRACT NO. 66A17				
ILLINOIS FED. AID PROJECT				