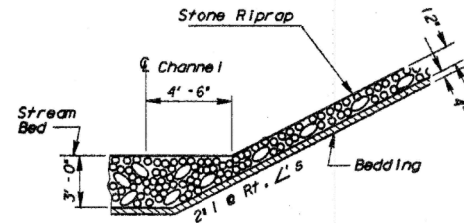


STATE OF ILLINOIS
DEPARTMENT OF TRANSPORTATION

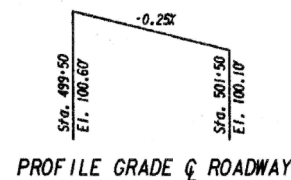
ROUTE NO.	SECTION	COUNTY	TOTAL SHEETS	SHEET NO.
S.B. 1.25	38 BR	IROQUOIS	22	7
F.A.				
FED. ROAD DIST. NO.	3	ILLINOIS	FED. AID PROJECT	

SHEET NO. 1
4 SHEETS

B.M. 2- Chiseled "C" Cut on N.E. Corner of Old Railroad Bridge Foundation @ Sta. 500+18, 105' Right Elevation 98.14'. Existing Structure #038-0113 Built as Part of S.B. 1. Rte. 25 Section 38B at Sta. 500+60 in 1921. R.C. thru Girders on Closed Abutments, 33'-0" Back to Back and 23'-2" Out to Out of Deck, to be Replaced by P.P.C. Deck Beams on Open Abutments. Contractor to Remove Existing Structure as Necessary to Accomodate New Bridge. Traffic to be Detoured. Salvage - None



RIPRAP ANCHOR DETAIL



PROFILE GRADE & ROADWAY

DESIGN SPECIFICATIONS

1983 AASHTO & 1984 & 1985 Interim HS20-44 Loading

DESIGN STRESSES

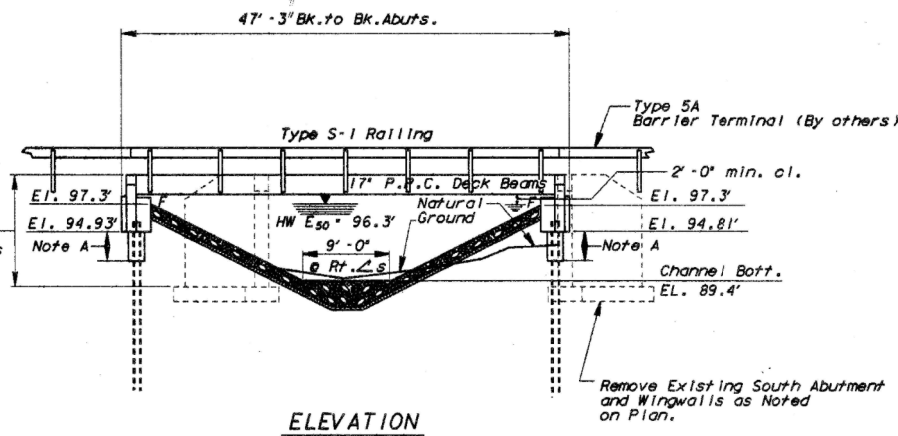
FIELD UNITS
f'c = 3,500 p.s.i.
f'y = 60,000 p.s.i.

PRECAST PRESTRESSED UNITS

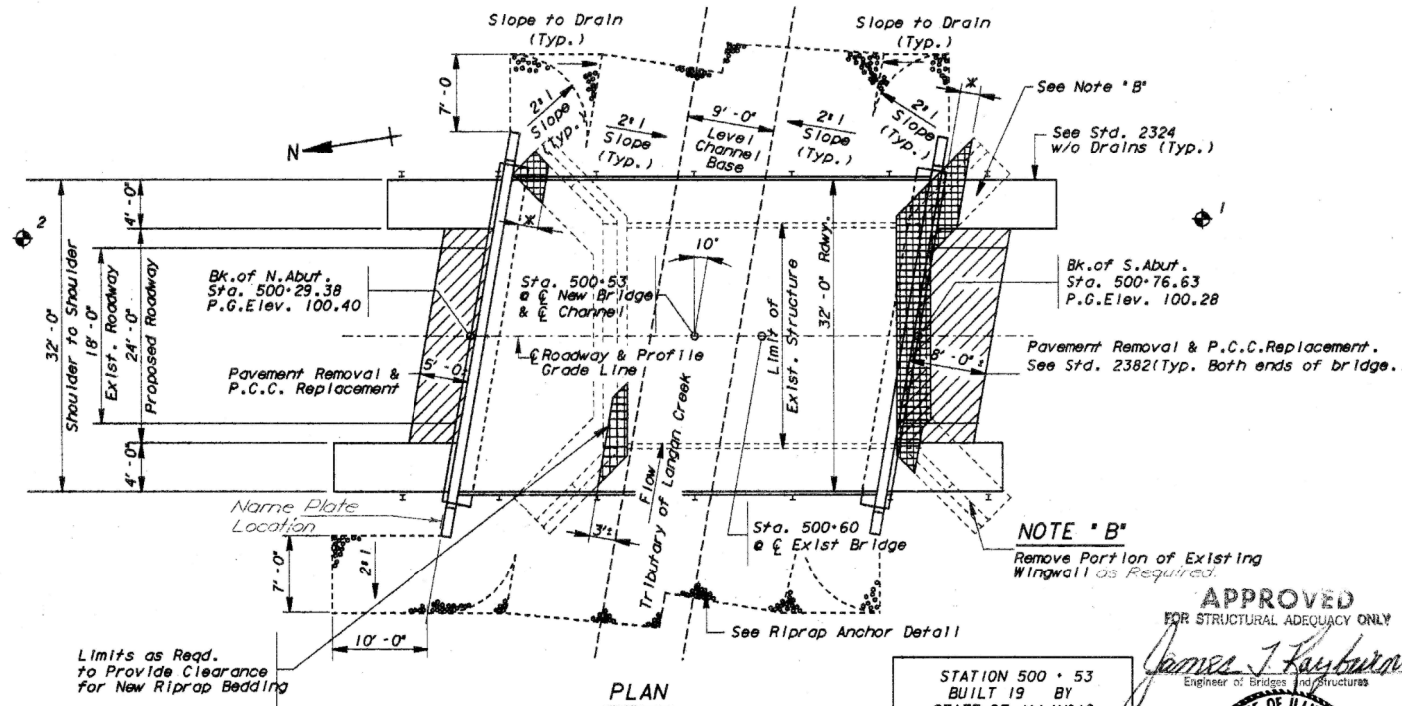
f'c = 5,000 p.s.i.
f'ci = 4,800 p.s.i.
f's = 270,000 p.s.i. (1/2" strands)
f'sl = 189,000 p.s.i. (1/2" strands)
Allow 25'/sq. ft. for future wearing surface.

Design	DJ
Checked	WK
Drawing	AJM
Checked	DJ

Remove Portion of Existing North Abutment and Wingwalls above El. 89.0' except where noted otherwise on plan.



ELEVATION



PLAN

Limits as Req'd. to Provide Clearance for New Riprap Bedding

LEGEND

- Indicates Area of Complete Removal of Existing Substructure.
- Denotes 2'-0" Minimum Clear of New Abutment.
- Denotes Soil Boring
- Denotes Pavement Removal

STATION 500+53
BUILT 19 BY
STATE OF ILLINOIS
S.B. 1. RT. 25 SEC. 38 BR
LOADING HS-20
STR. NO. 038-0184

NAME PLATE
(SEE STD. 2113)

WATERWAY INFORMATION

Drainage Area = 6.07 Sq. Mi. Low Grade Elev. = 99.53 At Sta. 502+25										
Flood	Freq.	0	Opening	Sq. Ft.	Natural	Head-Ft.	Headwater	EL		
Design	50	993	157	157	96.3'	1.47	1.46	97.77	97.76	
Base	100	1140	163	165	96.5'	1.83	1.76	98.33	98.26	
Overtopping										
Max. Calc.	500	1480		184	97.0		2.44		99.44	

APPROVED
FOR STRUCTURAL ADEQUACY ONLY

James J. Farber
Engineer of Bridges and Structures



GENERAL NOTES

- See Sheet 22 for Boring Data.
- Reinforcement bars shall conform to the requirements of AASHTO M31 or M-53 Grade 60.
- The top surface of the beams shall be finished in accordance with Article 505.06 of the Standard Specification except that the surface shall not be roughened by brooming. The finished surface shall be free of depressions or high spots with sharp corners, and the top edge of keys shall be rounded or chamfered a minimum of 1/4".
- A Calcium Nitrite Corrosion Inhibitor, as covered in the Special Provisions, shall be used in the concrete for precast prestressed concrete deck beams.
- Layout of stone riprap may be varied in the field to suit ground conditions as directed by the Engineer.
- The contractor shall drive ONE test pile in a permanent location at the North Abutment as directed by the Engineer before ordering the remainder of piles.

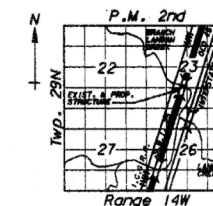
TOTAL BILL OF MATERIAL

Item	Unit	Super.	Sub.	Total
Removal of Existing Structures	Each		1	1
Structure Excavation	Cu. Yd.		60	60
Steel Piles (HP 10 X 42)	Lin. Ft.		429	429
Test Pile, Steel (HP 10 X 42)	Each		1	1
Class X Concrete	Cu. Yd.		29.8	29.8
Reinforcement Bars	Pounds		3440	3440
P.P. Concrete Deck Beams, (17" Dp.)	Sq. Ft.	1415		1415
Waterproofing Membrane System	Sq. Yd.	164		164
Bituminous Conc. Surf. Crse. C.I. 1	Tons	21		21
Steel Railing, Type S-1	Lin. Ft.	90		90
Stone Rip Rap	Sq. Yd.		285	285
Name Plates	Each		1	1
Pavement Rem. & P.C.C. Rep. T2 10'	Sq. Yd.		36	36
P.C. Mortar Fairing Course	Lin. Ft.		310	310
Class X Concrete Superstructure	Cu. Yds.		3.6	3.6

Remove entire Existing Superstructure and Portions of Existing Substructure as shown in PLAN and ELEVATION. Pavement Removal between backs of existing and proposed abutments is cast incidental to Removal of Existing Structure.

NOTE "A"

Use Class X Concrete Encasement; 1'-9" Dia. x 3'-0" with W.W. Fabric. For Details See Abutment Dwg. Sht. 4 of 4.



LOCATION SKETCH

GENERAL PLAN & ELEVATION
S.B. 1. ROUTE 25
OVER Tributary of Langan Creek
SECTION 38 BR
IROQUOIS COUNTY
STATION 500+53

1101,63143975005A.C1V

SN 038 - 0184

10-3-86

FILE NAME =	USER NAME = carpenterdj	DESIGNED -	REVISED -
c:\pwork\pwork\dtd\carpenterdj\d0241716\366A72-sht-details.DGN		DRAWN -	REVISED -
		CHECKED -	REVISED -
		DATE -	REVISED -

STATE OF ILLINOIS
DEPARTMENT OF TRANSPORTATION

FOR INFORMATION ONLY
EXISTING BRIDGE PLANS

SCALE: SHEET OF SHEETS STA. TO STA.

F.A.S. RTE.	SECTION	COUNTY	TOTAL SHEETS	SHEET NO.
1324	38 BR	IROQUOIS	35	25
CONTRACT NO. 66A72				
ILLINOIS FED. AID PROJECT				