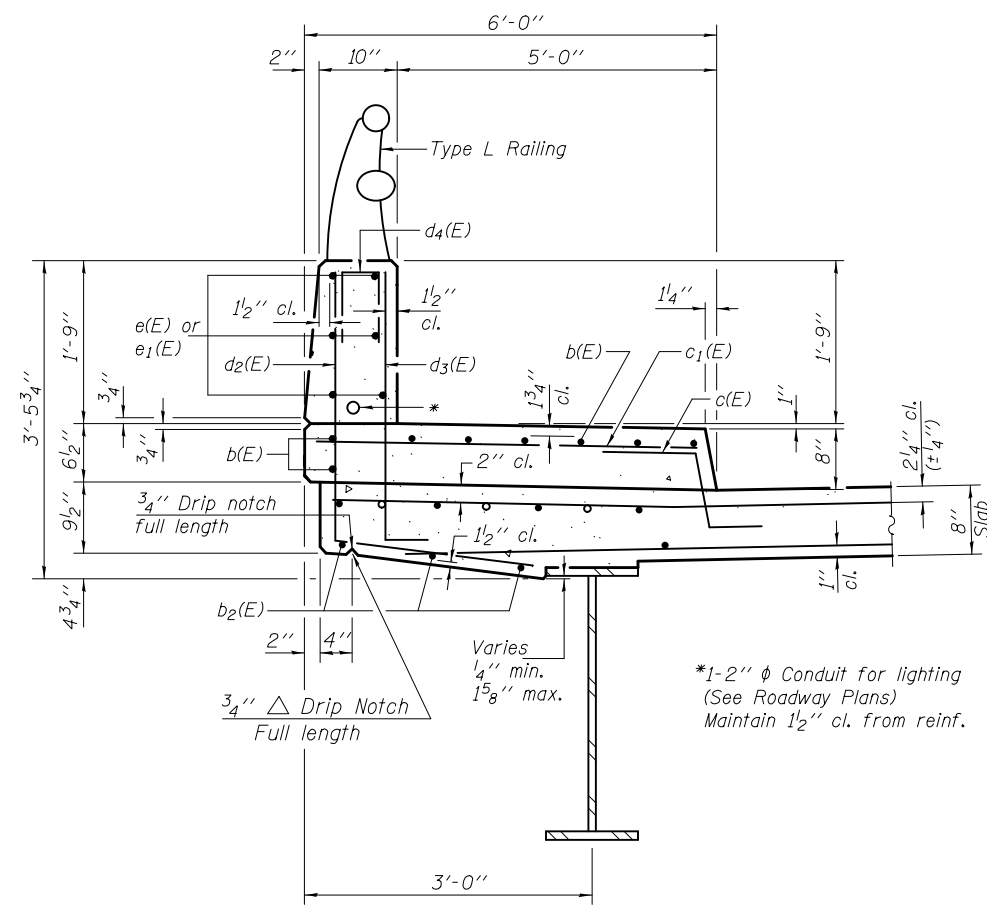
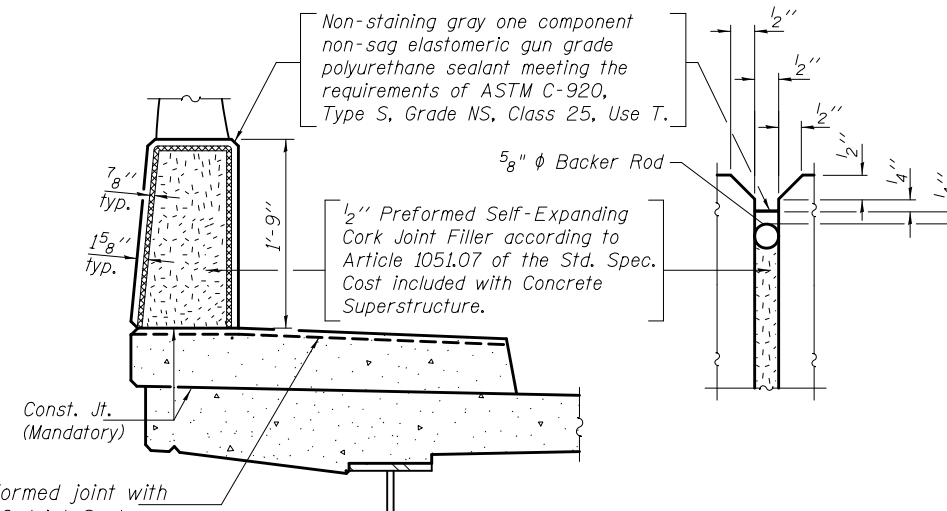


**INSIDE ELEVATION OF EAST PARAPET**  
(Looking East)

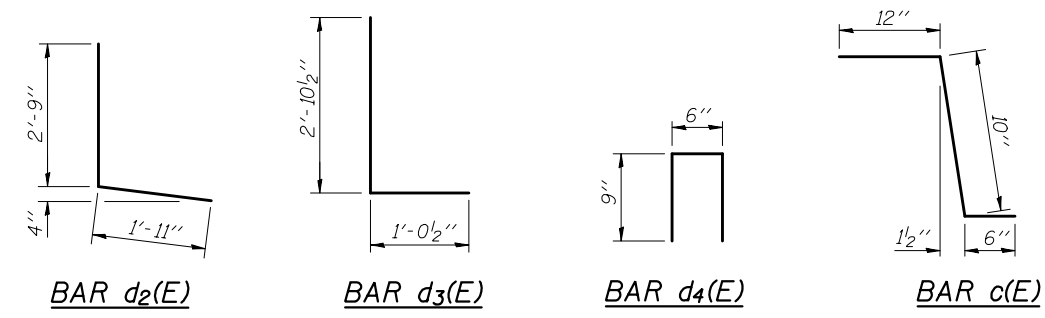


**SECTION THRU EAST PARAPET**  
(Looking South)



**PARAPET JOINT DETAILS**

1/4" x 3/4" Formed joint with Bridge Relief Joint Sealer (full width along joint - backer rod not required) at Pier and either side. See sheet 9 of 24 for locations.



DESIGNED - Dewey H. Couitas	EXAMINED - <i>Joanne F. [Signature]</i>	DATE - OCTOBER 9, 2014
CHECKED - Frank W. Sharpe	PASSED - <i>Carl [Signature]</i>	REVISED
DRAWN - h.t. duong	ACTING ENGINEER OF BRIDGES AND STRUCTURES	REVISED
CHECKED - DHC/FWS		

**STATE OF ILLINOIS**  
**DEPARTMENT OF TRANSPORTATION**

**SUPERSTRUCTURE DETAILS**  
**STRUCTURE NO. 032-0124**

F.A.U. RTE.	SECTION	COUNTY	TOTAL SHEETS	SHEET NO.
5966	(32-2) HBR-6	GRUNDY	98	57
CONTRACT NO. 66B27				

SHEET NO. 10 OF 24 SHEETS

ILLINOIS FED. AID PROJECT