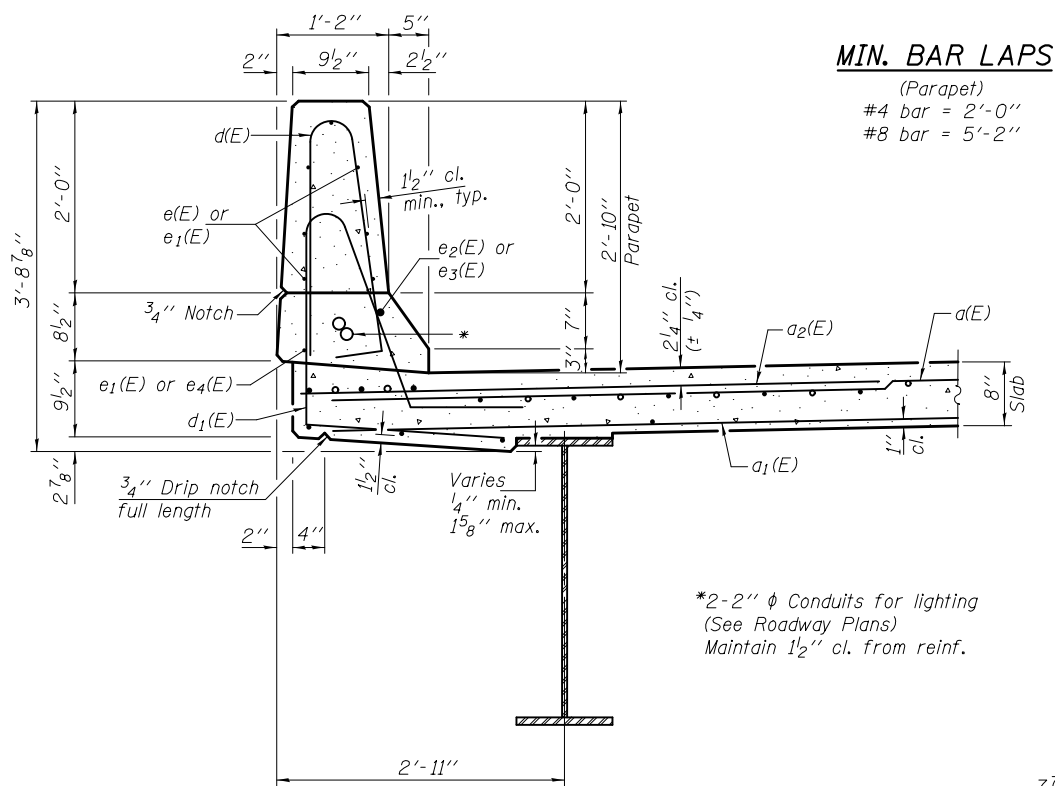


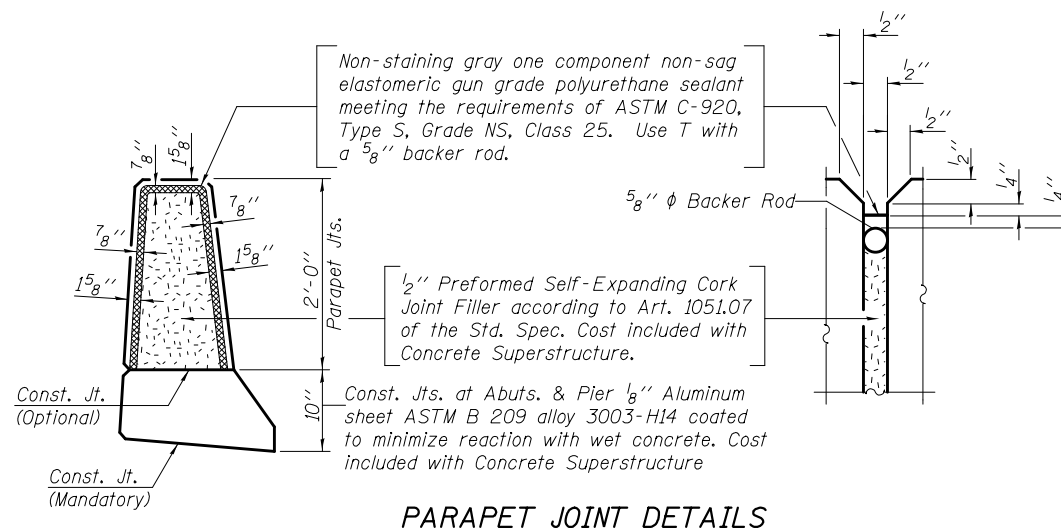
INSIDE ELEVATION OF WEST PARAPET
(Looking West)

Alum. sheeted const. jts. in base of parapet
Parapet joint spacing

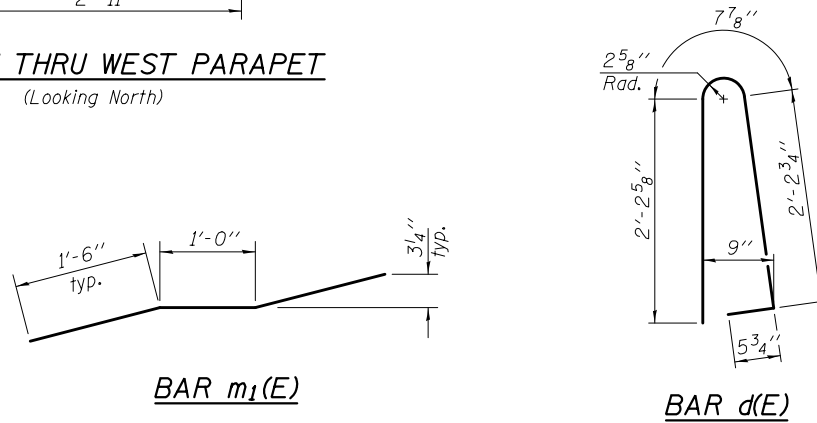


SECTION THRU WEST PARAPET
(Looking North)

MIN. BAR LAPS
(Parapet)
#4 bar = 2'-0"
#8 bar = 5'-2"



PARAPET JOINT DETAILS



BAR m₁(E)

BAR d(E)

BAR d₁(E)

BAR s₁(E)

BARS s(E) & u(E)

SUPERSTRUCTURE BILL OF MATERIAL

Bar	No.	Size	Length	Shape
d(E)	384	#5	37'-0"	—
a ₁ (E)	250	#5	35'-8"	—
a ₂ (E)	384	#6	6'-6"	—
a ₃ (E)	4	#5	37'-10"	—
b(E)	329	#5	32'-0"	—
b ₁ (E)	72	#6	33'-8"	—
b ₂ (E)	288	#5	28'-4"	—
c(E)	209	#5	2'-4"	┌
c ₁ (E)	209	#5	5'-6"	┌
d(E)	228	#5	5'-7"	┌
d ₁ (E)	228	#5	7'-6"	┌
d ₂ (E)	209	#4	4'-8"	┌
d ₃ (E)	209	#6	3'-11"	┌
d ₄ (E)	48	#4	2'-0"	┌
e(E)	130	#4	16'-11"	—
e ₁ (E)	28	#4	17'-8"	—
e ₂ (E)	6	#8	33'-3"	—
e ₃ (E)	2	#8	17'-8"	—
e ₄ (E)	8	#4	23'-6"	—
m(E)	16	#6	37'-7"	—
m ₁ (E)	48	#5	4'-0"	┌
m ₂ (E)	16	#6	2'-6"	—
m ₃ (E)	40	#6	6'-2"	—
s(E)	82	#5	8'-3"	┌
s ₁ (E)	72	#4	11'-0"	┌
u(E)	76	#5	4'-2"	┌
v(E)	76	#5	4'-10"	┌
Reinforcement Bars, Epoxy Coated		Pound	64020	
Concrete Superstructure		Cu. Yds.	305.0	

Bars indicated thus 1 x 3-#5 etc. indicates 1 line of bars with 3 lengths per line.

DESIGNED - Dewey H. Couitas
CHECKED - Frank W. Sharpe
DRAWN - h.t. duong
CHECKED - DHC/FWS

EXAMINED - *Joanne F. [Signature]*
PASSED - *Carl [Signature]*
ACTING ENGINEER OF BRIDGE DESIGN
ACTING ENGINEER OF BRIDGES AND STRUCTURES

DATE - OCTOBER 9, 2014
REVISED

STATE OF ILLINOIS
DEPARTMENT OF TRANSPORTATION

SUPERSTRUCTURE DETAILS
STRUCTURE NO. 032-0124

SHEET NO. 11 OF 24 SHEETS

F.A.U. RT.E.	SECTION	COUNTY	TOTAL SHEETS	SHEET NO.
5966	(32-2) HBR-6	GRUNDY	98	58
CONTRACT NO. 66B27				
ILLINOIS FED. AID PROJECT				