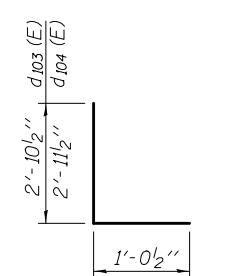


MIN. BAR LAPS
 #4 bar = 2'-4"
 #5 bar = 2'-11"

*Tilt #9 b101 (E) bars as required to maintain clearance.
 **Space between a103 (E) bars.
 ***Cut c101 (E) bars to fit.

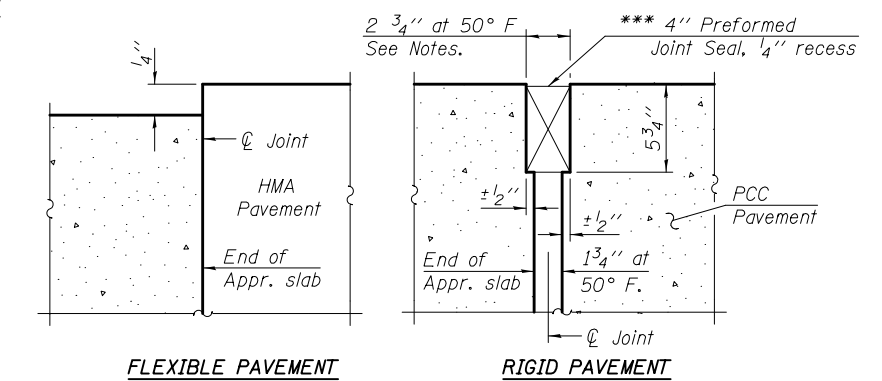
(South approach shown - North approach similar)



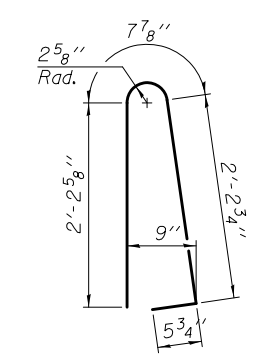
BARS d103 (E) & d104 (E)

Notes:
 See sheet 14 of 24 for Sections C-C, D-D, D1-D1 and Views E-E & G-G.
 a100 (E) thru a103 (E) bar spacings measured along \hat{C} Rdwy.
 The joint opening shall be determined per Article 520.04 except that on jointless structures, the distance described as the bridge length between the nearest fixed bearings each way from the joint shall be taken as half the bridge length plus the approach slab length. The minimum dimension shall be 1 1/2' for installation purposes.

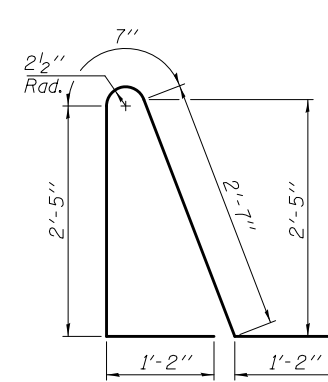
*** Cost included with Concrete Superstructure.



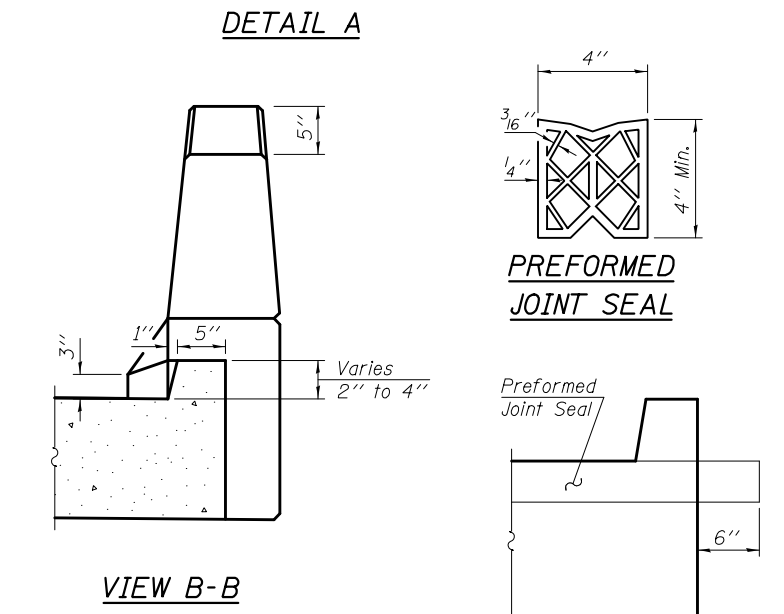
FLEXIBLE PAVEMENT RIGID PAVEMENT



BAR d100 (E)



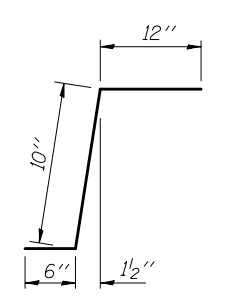
BAR d101 (E)



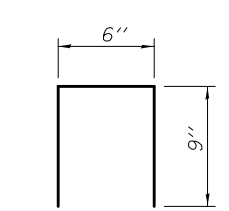
VIEW B-B

PREFORMED JOINT SEAL

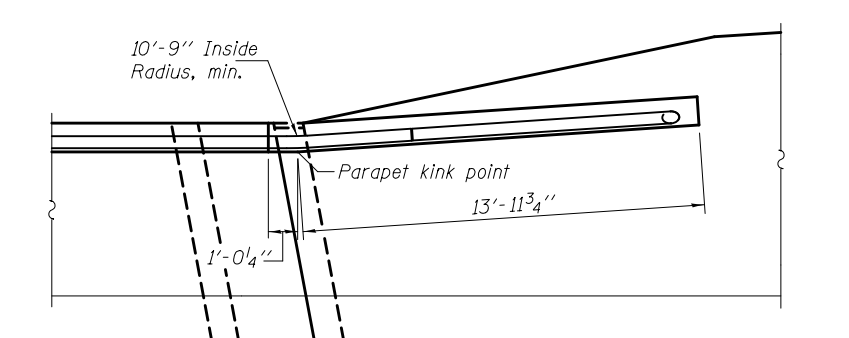
VIEW F-F



BAR c100 (E)



BAR d105 (E)



PLAN - RAILING END DETAIL

| | | | | | | | | | | |
|-----------------------------|---|------------------------|---|--|---------------------------|------------------------|-----------------|-------------------|----------------|--|
| DESIGNED - Dewey H. Couitas | EXAMINED - <i>Joanne F. [Signature]</i> | DATE - OCTOBER 9, 2014 | STATE OF ILLINOIS DEPARTMENT OF TRANSPORTATION | BRIDGE APPROACH SLAB DETAILS STRUCTURE NO. 032-0124 | F.A.U. R.T.E. - 5966 | SECTION - (32-2) HBR-6 | COUNTY - GRUNDY | TOTAL SHEETS - 98 | SHEET NO. - 60 | |
| CHECKED - Frank W. Sharpe | PASSED - <i>Carl [Signature]</i> | REVISED | | | CONTRACT NO. 66B27 | | | | | |
| DRAWN - h.t. duong | ACTING ENGINEER OF BRIDGES AND STRUCTURES | REVISED | | | SHEET NO. 13 OF 24 SHEETS | | | | | |
| CHECKED - DHC/FWS | | | | | ILLINOIS FED. AID PROJECT | | | | | |