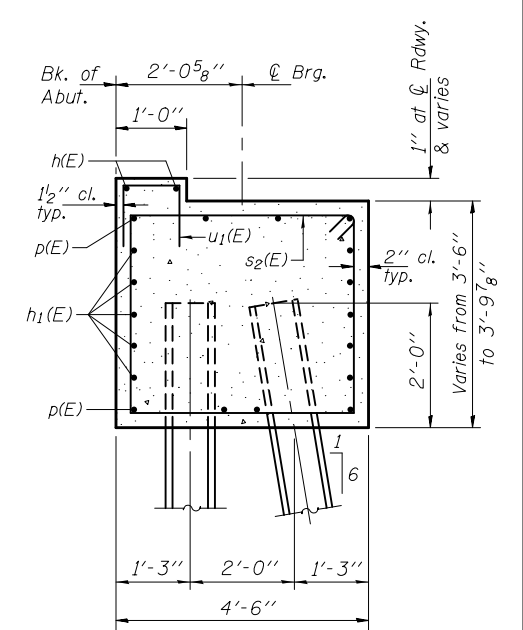
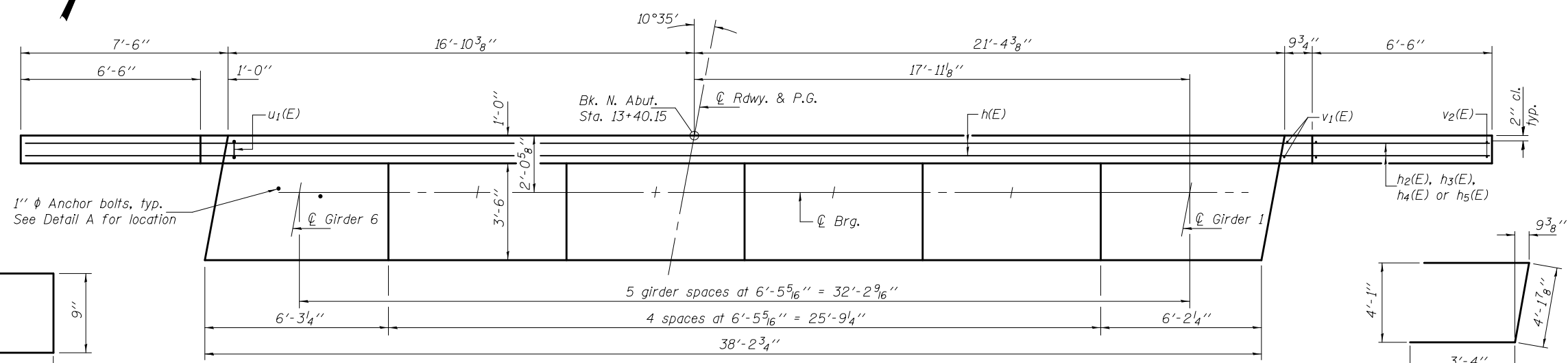


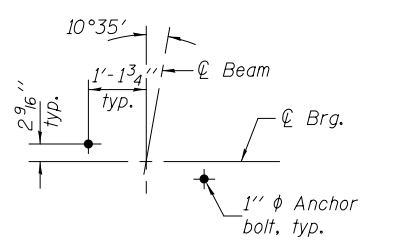
ELEVATION
(Looking North)



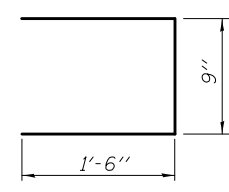
SECTION THRU ABUT.



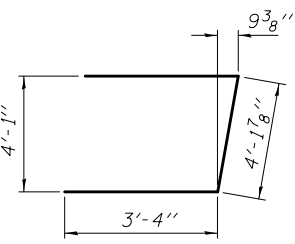
TOP PLAN



DETAIL A

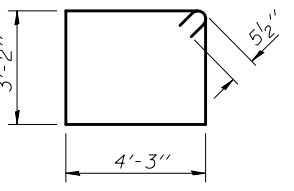


BAR u1(E)



BAR u2(E)

BAR s2(E)



BAR s2(E)

Place s2(E) bars parallel to @ Rdwy. Spacing shown is perpendicular to s2(E) bars.

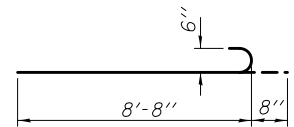
PILE DATA
Type: Steel HP14x73
Nominal Required Bearing: 578 Kips
Factored Resistance Available: 318 Kips
Est. Length: 46'
No. Production Piles: 7
No. Test Piles: 0

Notes: Pour steps monolithically with cap.
Space reinforcement in cap to miss anchor bolts.

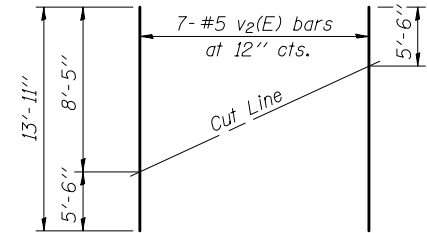
BILL OF MATERIAL

Bar	No.	Size	Length	Shape
h(E)	2	#5	37'-10"	—
h1(E)	10	#4	37'-10"	—
h2(E)	10	#6	9'-7"	—
h3(E)	20	#6	7'-1"	—
h4(E)	4	#6	7'-8"	—
h5(E)	10	#6	9'-4"	—
p(E)	8	#7	37'-10"	—
s2(E)	39	#5	15'-9"	□
u1(E)	39	#5	3'-9"	—
u2(E)	8	#6	10'-10"	—
v1(E)	4	#5	8'-7"	—
v2(E)	14	#5	13'-11"	—
Structure Excavation		Cu. Yd.	123	
Concrete Structures		Cu. Yd.	28.0	
Reinforcement Bars, Epoxy Coated		Pound	2660	
Furnishing Steel Piles HP14x73		Foot	322	
Driving Piles		Foot	322	

For details of piles, see sheet 22 of 24.



BAR h5(E)



FIELD CUTTING DIAGRAM

Order v2(E) full length. Cut as shown and use remainder of bars in opposite face.