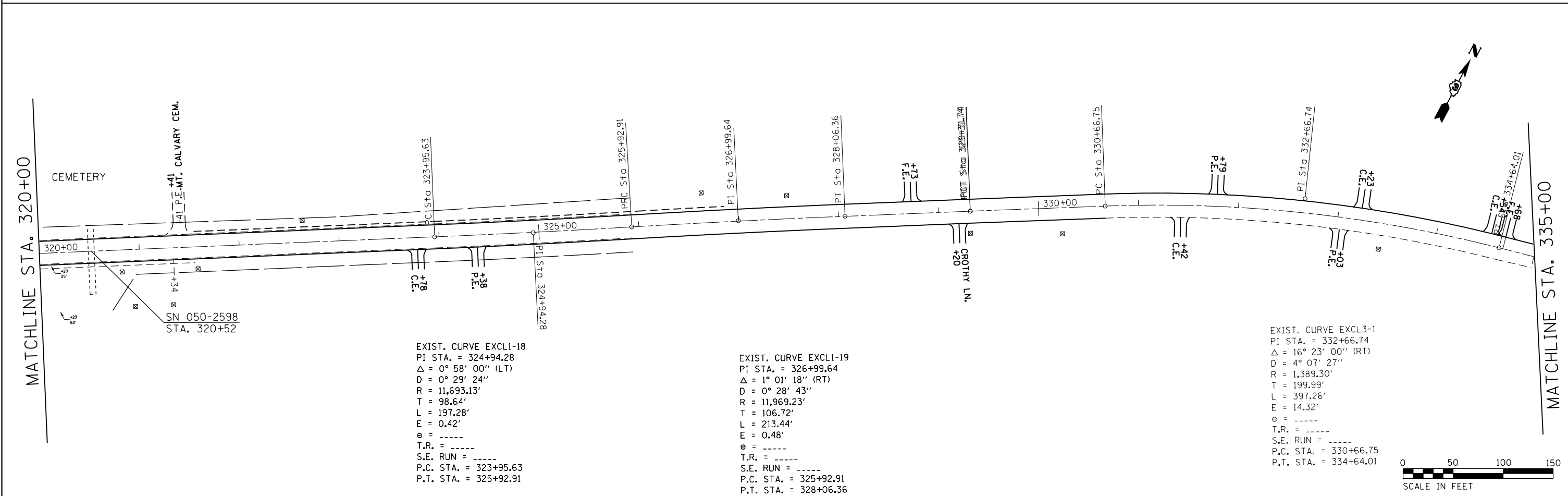


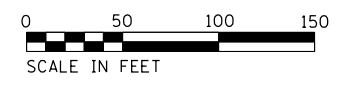
EXIST. CURVE EXCL1-17
 PI STA. = 314+44.82
 $\Delta = 11^\circ 09' 43''$ (LT)
 D = 2° 30' 00"
 R = 2,291.83'
 T = 223.95'
 L = 446.48'
 E = 10.92'
 e = -----
 T.R. = -----
 S.E. RUN = -----
 P.C. STA. = 312+20.87
 P.T. STA. = 316+67.35



EXIST. CURVE EXCL1-18
 PI STA. = 324+94.28
 $\Delta = 0^\circ 58' 00''$ (LT)
 D = 0° 29' 24"
 R = 11,693.13'
 T = 98.64'
 L = 197.28'
 E = 0.42'
 e = -----
 T.R. = -----
 S.E. RUN = -----
 P.C. STA. = 323+95.63
 P.T. STA. = 325+92.91

EXIST. CURVE EXCL1-19
 PI STA. = 326+99.64
 $\Delta = 1^\circ 01' 18''$ (RT)
 D = 0° 28' 43"
 R = 11,969.23'
 T = 106.72'
 L = 213.44'
 E = 0.48'
 e = -----
 T.R. = -----
 S.E. RUN = -----
 P.C. STA. = 325+92.91
 P.T. STA. = 328+06.36

EXIST. CURVE EXCL3-1
 PI STA. = 332+66.74
 $\Delta = 16^\circ 23' 00''$ (RT)
 D = 4° 07' 27"
 R = 1,389.30'
 T = 199.99'
 L = 397.26'
 E = 14.32'
 e = -----
 T.R. = -----
 S.E. RUN = -----
 P.C. STA. = 330+66.75
 P.T. STA. = 334+64.01



FILE NAME =	USER NAME = duncanbd	DESIGNED -	REVISED -	STATE OF ILLINOIS DEPARTMENT OF TRANSPORTATION	PLAN VIEW			F.A.P. R.T.E. =	SECTION	COUNTY	TOTAL SHEETS	SHEET NO.
Default	ei:\pw\work\p\dot\duncanbd\02288157\0368891-sht-2plan.dgn	DRAWN -	REVISED -		SCALE: 1:50	SHEET 8 OF 18 SHEETS	STA. 305+00 TO STA. 335+00	623	(G,H,O)RS-3	LAS-GRU	36	24
	PLOT SCALE = 100.0000' / in.	CHECKED -	REVISED -					CONTRACT NO. 66B91				
	PLOT DATE = 6/27/2014	DATE -	REVISED -					ILLINOIS FED. AID PROJECT				