

STATE OF ILLINOIS
DEPARTMENT OF TRANSPORTATION
DIVISION OF HIGHWAYS

**PROPOSED
HIGHWAY PLANS**

F.A.P. ROUTE 840 (IL 49)
SECTION 137-BR
PROJECT : ACF-0840(068)
BRIDGE REPLACEMENT (S.N. 038-0119)
IROQUOIS COUNTY

F.A.P. RTE.	SECTION	COUNTY	TOTAL SHEETS	SHEET NO.
840	137-BR	IROQUOIS	24	1
ILLINOIS CONTRACT NO. 66892				

INDEX

- 1 COVER SHEET
- 2 GENERAL NOTES & STANDARDS
- 3-7 SUMMARY OF QUANTITIES
- 8 TYPICAL SECTIONS
- 9 ALIGNMENT SHEET
- 10 RIGHT OF WAY PLAN
- 11 SCHEDULE OF QUANTITIES
- 12 PLAN & PROFILE
- 13 DETOUR PLAN
- 14-17 CULVERT AND WINGWALL PLANS
- 18 BORING LOG SHEET
- 19-20 CADD DETAILS
- 21-24 CROSS-SECTION SHEETS

D-93-018-13



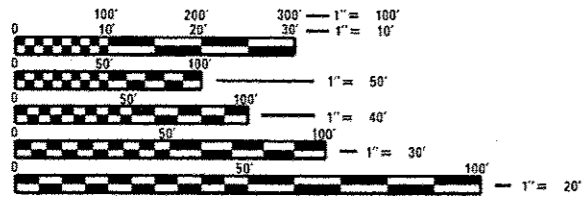
STATION 1224 + 00
S.N. 038-2026 (PR.)/038-0119 (EX.)
30'-0" LONG DOUBLE 12' X 10' CULVERT
CARRYING IL 49 OVER DITCH
(STRUCTURE REPLACEMENT)

C-93-017-13

DITCH, 0.5 MILES NORTH OF US 24

BEGIN PROJECT
STATION 1222 + 00

END PROJECT
STATION 1226 + 00

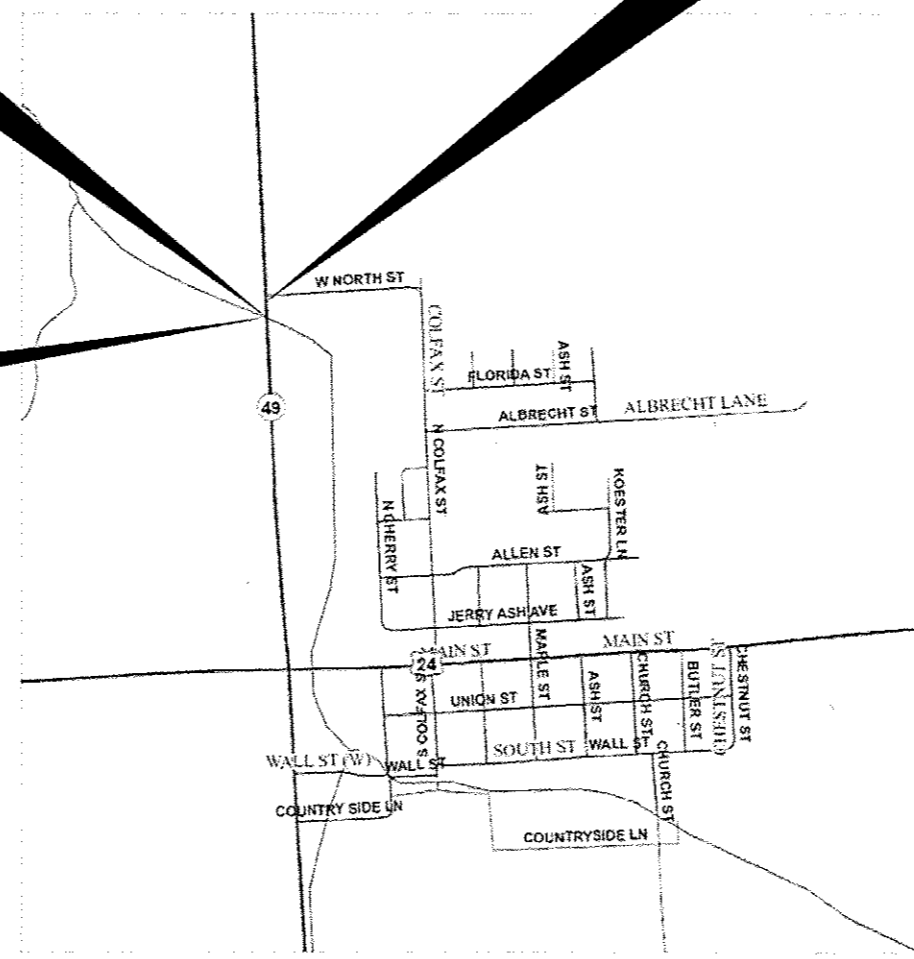


FULL SIZE PLANS HAVE BEEN PREPARED USING STANDARD ENGINEERING SCALES. REDUCED SIZED PLANS WILL NOT CONFORM TO STANDARD SCALES. IN MAKING MEASUREMENTS ON REDUCED PLANS, THE ABOVE SCALES MAY BE USED.

J.U.L.I.E.
JOINT UTILITY LOCATION INFORMATION FOR EXCAVATION
1-800-892-0123
OR 811

PROJECT ENGINEER: JOE KANNEL, P.E.
UNIT CHIEF: SCOTT FERGUSON, P.E.

CONTRACT NO. 66B92



GROSS LENGTH = 400 FT. = 0.76
NET LENGTH = 400 FT. = 0.76

FUNCTIONAL CLASSIFICATION
RURAL MINOR ARTERIAL
(CLASS II TRUCK ROUTE)

2013 ADT = 1750
P.V. = 92.7% S.U. = 2.4% M.U. = 4.9%

STATE OF ILLINOIS
DEPARTMENT OF TRANSPORTATION
DIVISION OF HIGHWAYS

SUBMITTED August 15 2014
Paul Costello
DEPUTY DIRECTOR OF HIGHWAYS, REGION ENGINEER

Oct 17 2014
John D. Baranzoli, P.E.
ENGINEER OF DESIGN AND ENVIRONMENT

Oct 17 2014
Omer Osman, P.E.
DIRECTOR OF HIGHWAYS, CHIEF ENGINEER

PRINTED BY THE AUTHORITY
OF THE STATE OF ILLINOIS