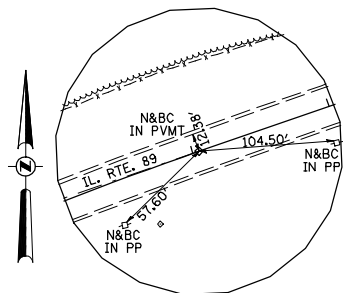
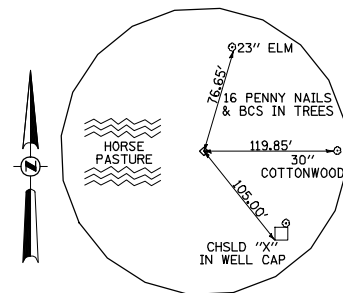


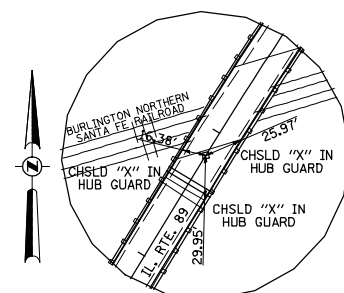
POT STA 275+00.00  
MAG NAIL IN CHSLD "X"  
N 1,568,888.67 E 2,549,708.17



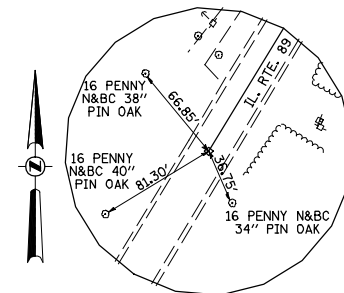
PC STA 277+95.58  
MAG NAIL IN CHSLD "X"  
N 1,568,791.05 E 2,549,429.17



PI STA 287+44.81  
#4 I. PIN  
N 1,568,477.56 E 2,548,533.21



PT STA 296+18.27  
MAG NAIL IN BIT. BRIDGE DECK  
N 1,567,665.82 E 2,548,041.15



POT STA 313+00.00  
MAG NAIL IN CHSLD "X"  
N 1,566,227.69 E 2,547,169.37

Chain IL89 contains:  
58 CUR IL89-1 61

Beginning chain IL89 description

Point 58 N 1,568,888.66 E 2,549,708.17 Sta 275+00.00

Course from 58 to PC IL89-1 S 70°42'56" W Dist 295.58

Curve Data

Curve IL89-1  
P.I. Station = 287+44.807 N 1,568,477.56 E 2,548,533.21  
Delta = 39° 29' 30" (LT)  
Degree = 2° 10' 00"  
Tangent = 949.23  
Length = 1,822.69  
Radius = 2,644.42  
External = 165.20  
Long Chord = 1,786.83  
Mid. Ord. = 155.49  
P.C. Station = 277+95.580 N 1,568,791.05 E 2,549,429.17  
P.T. Station = 296+18.272 N 1,567,665.82 E 2,548,041.15  
C.C. = N 1,566,295.01 E 2,550,302.52  
Back = S 70°42'56" W  
Ahead = S 31°13'26" W  
Chord Bear = S 50°58'11" W

Course from PT IL89-1 to 61 S 31°13'26" W Dist 1,681.73

Point 61 N 1,566,227.69 E 2,547,169.37 Sta 313+00.002

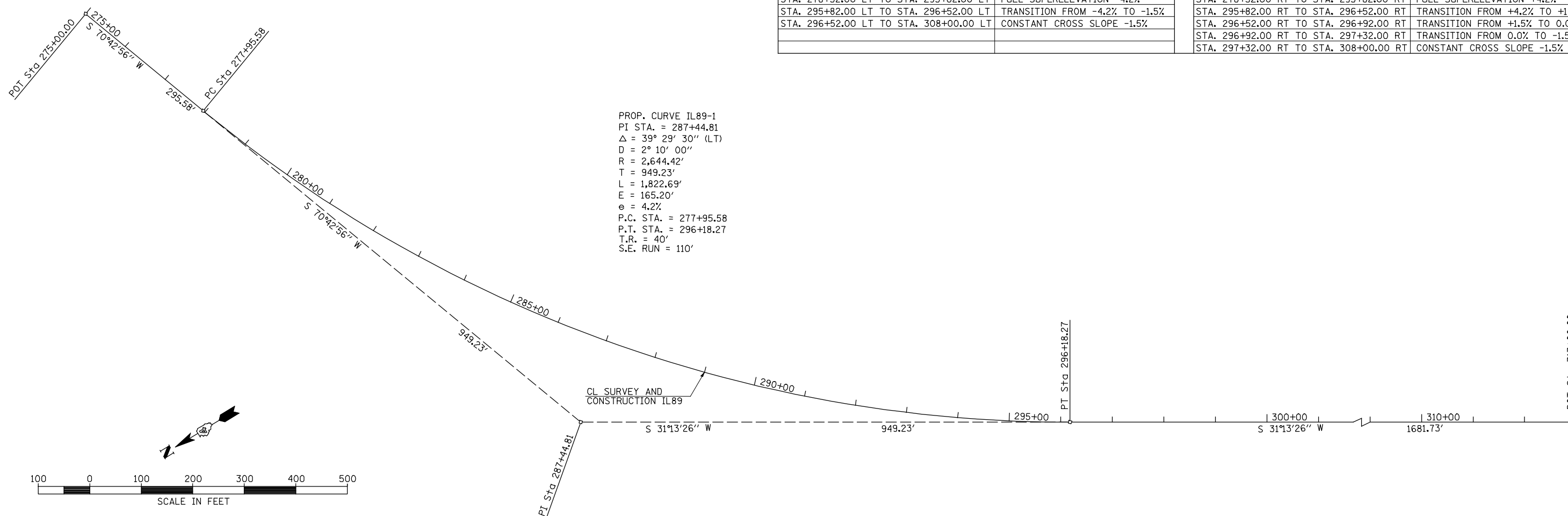
Ending chain IL89 description

BENCHMARKS

BM #	ELEVATION	STATION	OFFSET	DESCRIPTION
BM HEI WR1	640.05	281+46.00	67' LT	CHISELED "□" ON SOUTH CORNER OF THE FIRST (BOTTOM) CONC. STEP @ THE ENTRANCE STAIRWAY TO A TWO-STORY WHITE HOUSE. HOUSE #288
BM HEI 6	634.77	301+08.00	18' RT	SET CHISELED "□" ON TOP OF SW WINGWALL OF IL89 BRIDGE OVER CROW CREEK
BM HEI 5	626.64	305+65.00	37' RT	SET RR SPIKE IN A 46" PIN OAK ±115' SOUTHERLY OF END OF GUARD RAIL ON THE WEST SIDE OF IL89 (FIRST LARGE TREE SOUTH OF CROW CREEK NEAR WEST E.O.P.)

PROPOSED SUPERELEVATION TABLE

LEFT SUPERELEVATION		RIGHT SUPERELEVATION	
STA. 275+50.00 LT TO STA. 276+67.50 LT	TRANSITION FROM +3.0% TO 0.0%	STA. 275+50.00 RT TO STA. 276+67.50 RT	TRANSITION FROM -3.0% TO 0.0%
STA. 276+67.50 LT TO STA. 278+32.00 LT	TRANSITION FROM 0.0% TO -4.2%	STA. 276+67.50 RT TO STA. 278+32.00 RT	TRANSITION FROM 0.0% TO +4.2%
STA. 278+32.00 LT TO STA. 295+82.00 LT	FULL SUPERELEVATION -4.2%	STA. 278+32.00 RT TO STA. 295+82.00 RT	FULL SUPERELEVATION +4.2%
STA. 295+82.00 LT TO STA. 296+52.00 LT	TRANSITION FROM -4.2% TO -1.5%	STA. 295+82.00 RT TO STA. 296+52.00 RT	TRANSITION FROM +4.2% TO +1.5%
STA. 296+52.00 LT TO STA. 308+00.00 LT	CONSTANT CROSS SLOPE -1.5%	STA. 296+52.00 RT TO STA. 296+92.00 RT	TRANSITION FROM +1.5% TO 0.0%
		STA. 296+92.00 RT TO STA. 297+32.00 RT	TRANSITION FROM 0.0% TO -1.5%
		STA. 297+32.00 RT TO STA. 308+00.00 RT	CONSTANT CROSS SLOPE -1.5%



PROP. CURVE IL89-1  
PI STA. = 287+44.81  
Δ = 39° 29' 30" (LT)  
D = 2° 10' 00"  
R = 2,644.42'  
T = 949.23'  
L = 1,822.69'  
E = 165.20'  
e = 4.2%  
P.C. STA. = 277+95.58  
P.T. STA. = 296+18.27  
T.R. = 40'  
S.E. RUN = 110'

FILE NAME = v:\transportation\3013\cadd\sheets\0468880-shr-ATB.dgn	USER NAME = jdeen	DESIGNED - MVM	REVISED -	<b>STATE OF ILLINOIS DEPARTMENT OF TRANSPORTATION</b>	<b>F.A.P. ROUTE 698 (IL 89) ALIGNMENT, TIES &amp; BENCHMARKS</b>	F.A.P. RTE. = 698	SECTION = (125VBR)BR	COUNTY = MARSHALL	TOTAL SHEETS = 148	SHEET NO. = 19
PLOT SCALE = 200.00' / IN.	CHECKED - AWM	REVISED -	SCALE: 1"=100'			SHEET NO. 1 OF 1 SHEETS	STA. 275+00.00 TO STA. 308+50.00	CONTRACT NO. 68580		ILLINOIS FED. AID PROJECT
PLOT DATE = 7/25/2013	DATE - JULY 24, 2013	REVISED -								