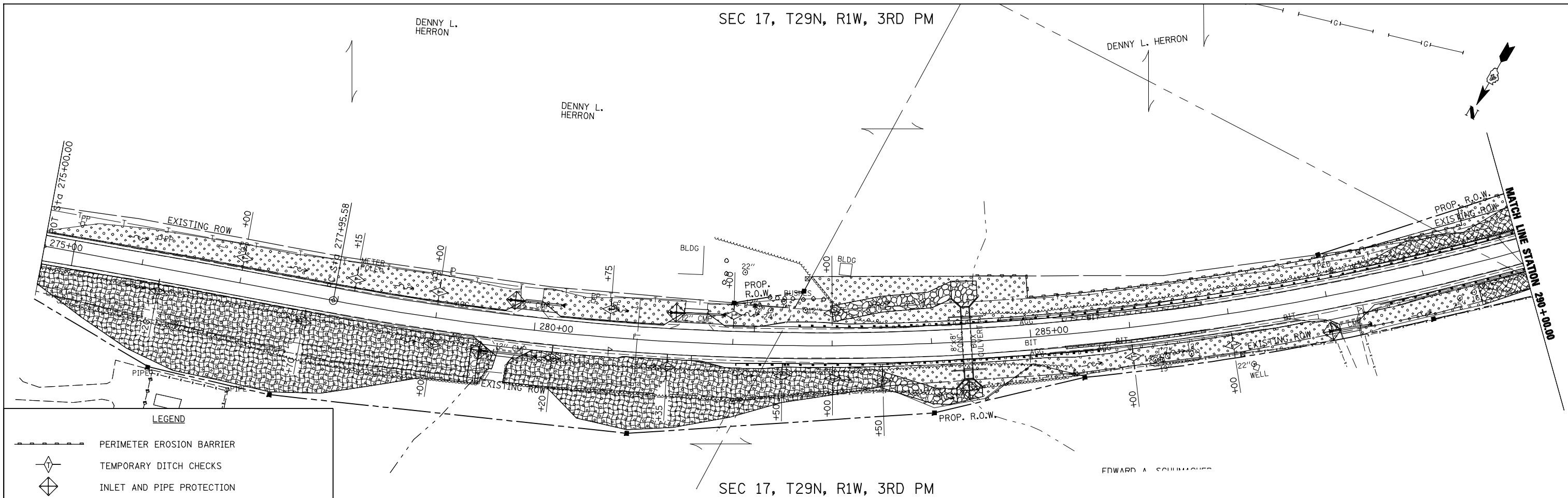


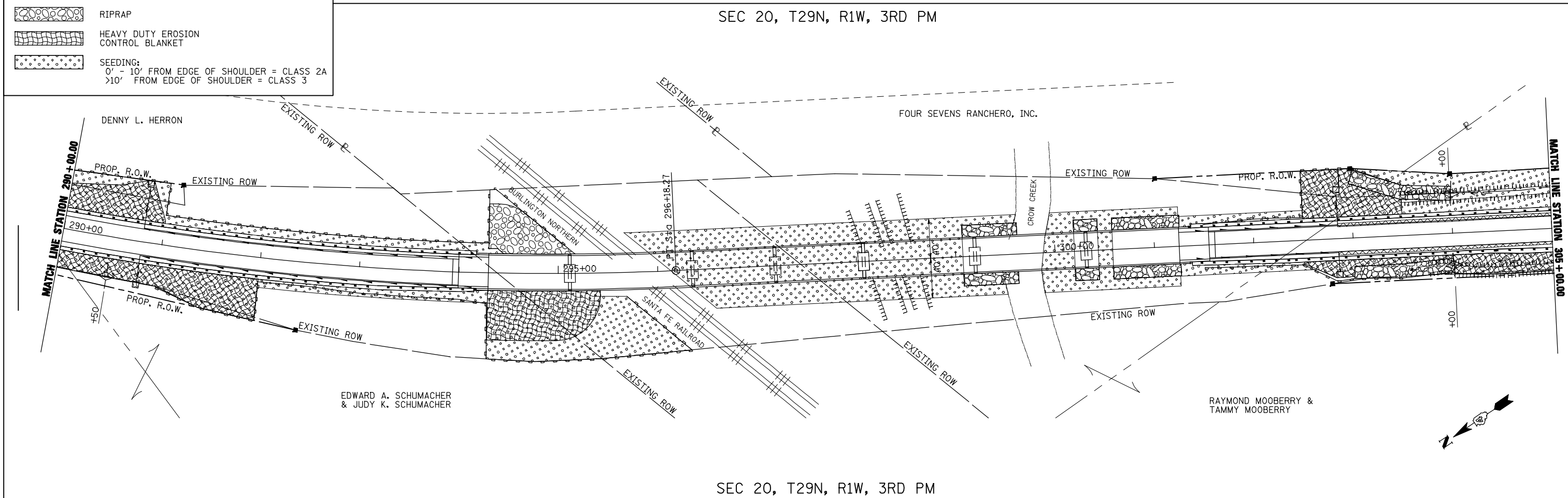
PLAN	SURVEYED	DATE
	PLOTTED	BY
	NOTED	
	CHECKED	
	ALIGNED	
	FILED	
	NO.	
	NO.	
	NO.	

PROFILE	SURVEYED	DATE
	PLOTTED	BY
	NOTED	
	CHECKED	
	ALIGNED	
	FILED	
	NO.	
	NO.	
	NO.	



LEGEND

- PERIMETER EROSION BARRIER
- TEMPORARY DITCH CHECKS
- INLET AND PIPE PROTECTION
- RIPRAP
- HEAVY DUTY EROSION CONTROL BLANKET
- SEEDING:
0' - 10' FROM EDGE OF SHOULDER = CLASS 2A
>10' FROM EDGE OF SHOULDER = CLASS 3



FILE NAME =	USER NAME = jdeen	DESIGNED - MVM	REVISED -
v:\transportation\3013\cadd\sheet\468580\sh-er-os01.dgn		DRAWN - TJD	REVISED -
		CHECKED - AWM	REVISED -
		DATE - JULY 24, 2013	REVISED -

SEC 20, T29N, R1W, 3RD PM

**STATE OF ILLINOIS
DEPARTMENT OF TRANSPORTATION**

**FAP 698 (IL RTE 89) EROSION CONTROL PLAN
STA 275+00 TO STA 305+00**

SCALE: 1"=50' SHEET NO. 1 OF 2 SHEETS STA. 275+00.00 TO STA. 305+00.00

F.A.P. RTE.	SECTION	COUNTY	TOTAL SHEETS	SHEET NO.
698	(125VBR)BR	MARSHALL	148	24
FED. ROAD DIST. NO. 7 ILLINOIS FED. AID PROJECT			CONTRACT NO. 68580	