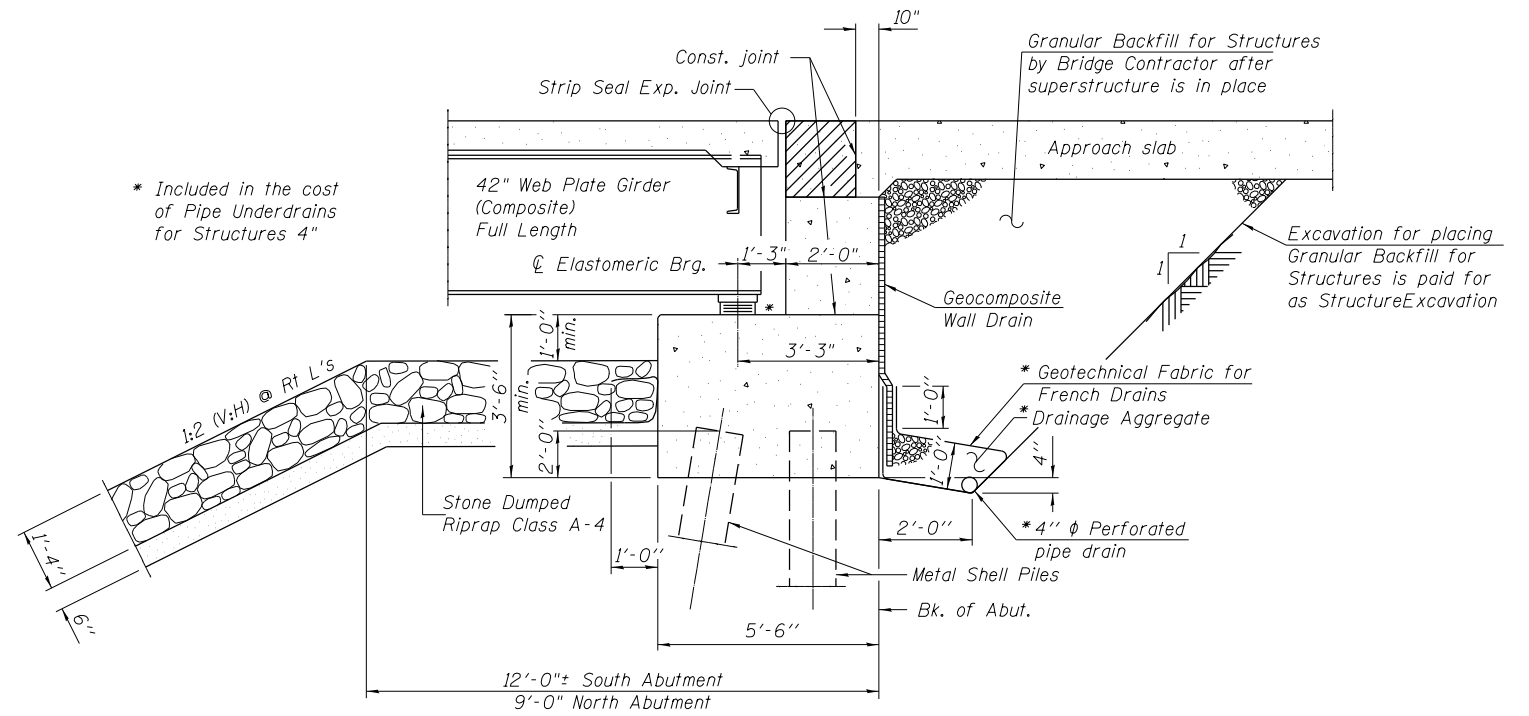
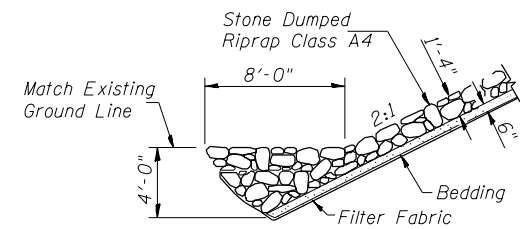


SECTION A-A



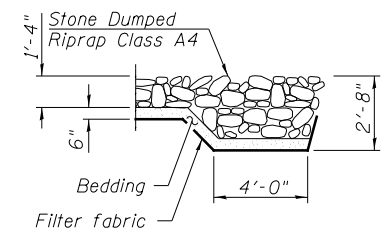
SECTION THRU PILE SUPPORTED  
STUB ABUTMENT

Note:  
All drainage system components shall extend parallel to the abutment back wall until they intersect the wingwalls or 2'-0" from the end of the wingwalls when the wings are parallel to the abutment. The pipe shall extend under the wingwall, if necessary until intersecting the side slopes. The pipes shall drain into concrete headwalls. (See Article 601.05 of the Standard Specifications and Highway Standard 60110).



STONE RIPRAP ANCHOR DETAIL

SECTION B-B



SECTION C-C