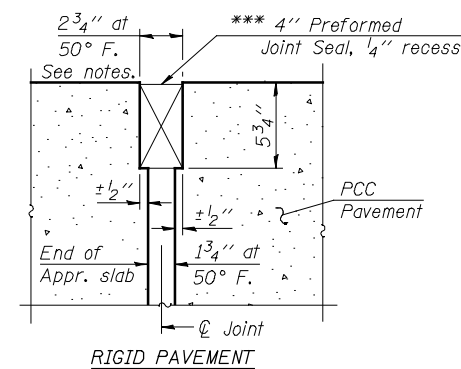


PLAN

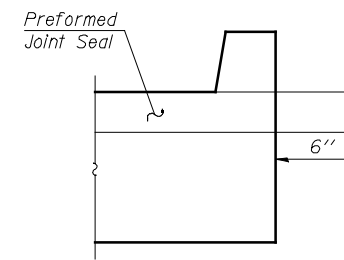
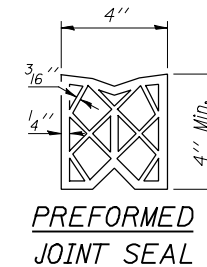
- * Tilt #9 b₁₁(E) bars as required to maintain clearance.
- ** Cut bars to fit at parapet.
- **** Closed cell joint filler according to Article 1051.08 of the Standard Specifications. Full depth of slab, full length of parapet. Typ. Each Parapet.

Notes:
 See sheet 23 of 62 for Sections C-C & D-D and View E-E.
 a₁₀(E) and a₁₁(E) bar spacings measured along C.R.
 The joint opening shall be determined per Article 520.04 of the Standard Specifications. The minimum dimension shall be 1 1/2" for installation purposes.

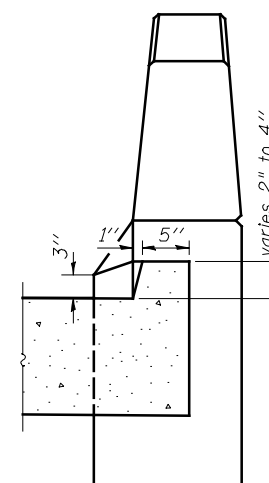
*** Cost Included with Concrete Superstructure.



DETAIL A



VIEW F-F



VIEW B-B

Hutchison Engineering, Inc.
 Jacksonville, Peoria, &
 Shorewood, Illinois

USER NAME = jdean	DESIGNED - JOH	REVISED -
PLOT SCALE = NONE	CHECKED - BAN	REVISED -
PLOT DATE = 7/25/2013	DRAWN - TAC	REVISED -
	CHECKED - JOH/BAN	REVISED -

STATE OF ILLINOIS
DEPARTMENT OF TRANSPORTATION

SOUTH BRIDGE APPROACH SLAB DETAILS
STRUCTURE NO. 062-0086

F.A.P. RTE. 698	SECTION (125VBR)BR	COUNTY MARSHALL	TOTAL SHEETS 148	SHEET NO. 47
			CONTRACT NO. 68580	
ILLINOIS FED. AID PROJECT				

SHEET NO. 22 OF 62 SHEETS