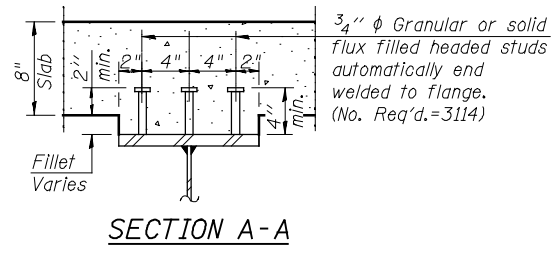


GIRDER ELEVATION - UNIT 1

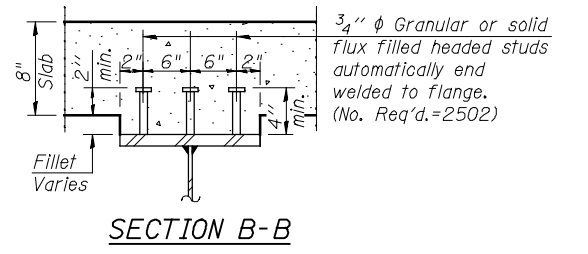


SECTION A-A

SHEAR STUD DIMENSIONS - UNIT 1

X1	Varies from 1'-9 5/8" to 2'-5 3/8"	(Girder 1 to Girder 6)
X2	Varies from 1'-6 5/8" to 1'-11 1/8"	(Girder 1 to Girder 6)
X3	Varies from 1'-10 5/8" to 2'-2 1/8"	(Girder 1 to Girder 6)
X4	Varies from 1'-8 3/8" to 2'-1 1/2"	(Girder 1 to Girder 6)
X5	Varies from 1'-8 3/8" to 2'-1 5/8"	(Girder 1 to Girder 6)
X6	Varies from 1'-11 1/8" to 2'-1 1/8"	(Girder 1 to Girder 6)

Notes:
 All diaphragms between girders shall be installed with erection pins and bolts in accordance with the erection plan approved by the Engineer. Individual diaphragms at supports may be temporarily disconnected to install bearing anchor rods.
 Load carrying components designated "NTR" shall conform to the Impact Testing Requirement, Zone 2.
 See Layout Plan and Dimension Table on Sheet no. 26 of 62 for additional girder dimensions.



SECTION B-B