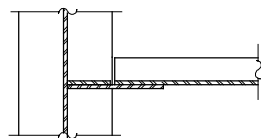
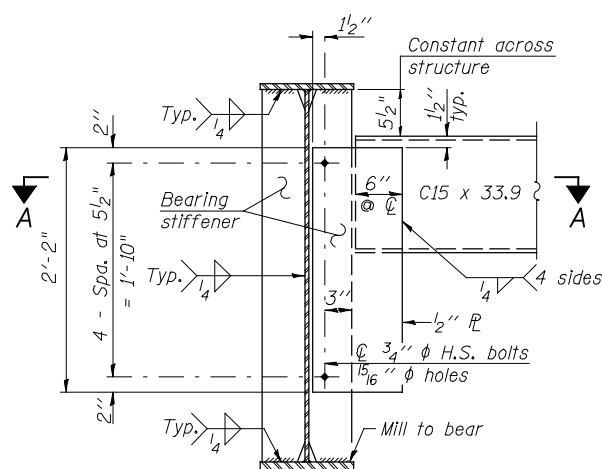


SECTION A-A

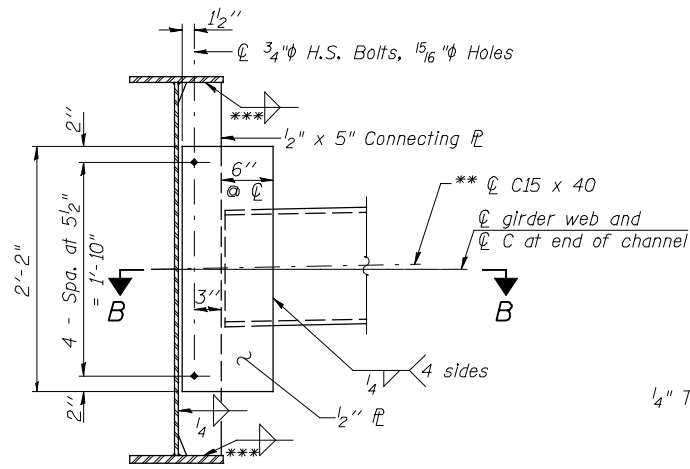


SECTION B-B



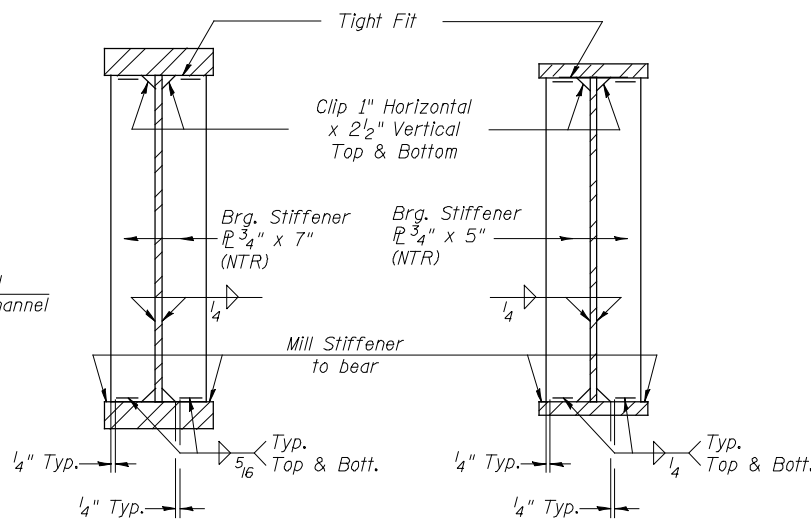
END DIAPHRAGM, D₁
(10 Required)

Note: Two hardened washers required for each set of oversized holes.



INTERIOR DIAPHRAGM, D
(85 Required)

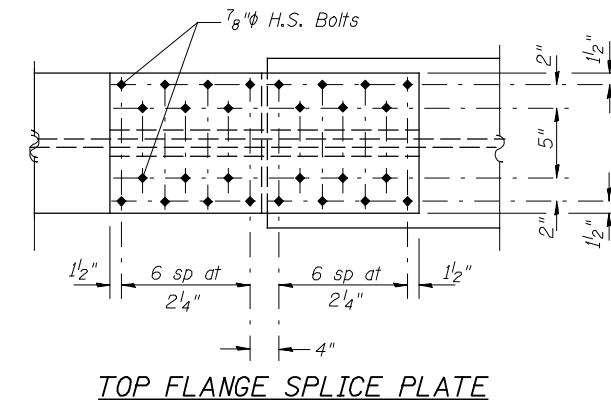
Note: Two hardened washers required for each set of oversized holes.



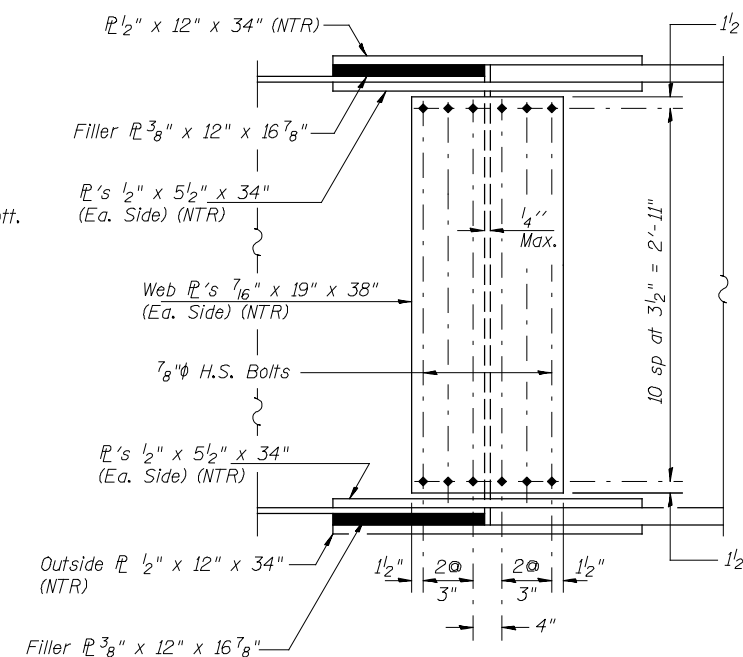
SECTION AT PIERS
4, 5 & 6

SECTION AT S. ABUTMENT
& S. BRG. PIER 3

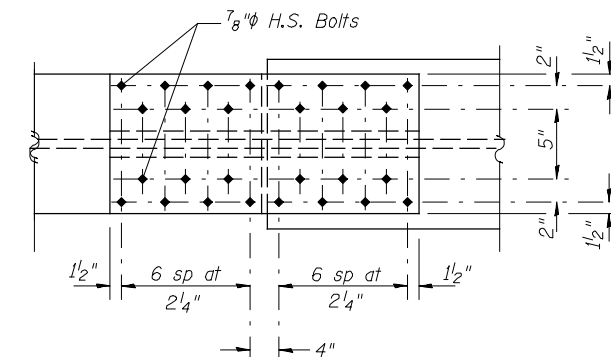
** Alternate channel C15x50 are permitted to facilitate material acquisition. Calculated weight of structural steel is based on C15x40 sections. The alternate, if utilized, shall be provided at no extra cost to the department.
*** 1/4" for 3/4" flange plates, 5/16" for all others



TOP FLANGE SPLICE PLATE



WEB SPLICE PLATE



BOTTOM FLANGE SPLICE PLATE

FIELD SPLICE DETAIL

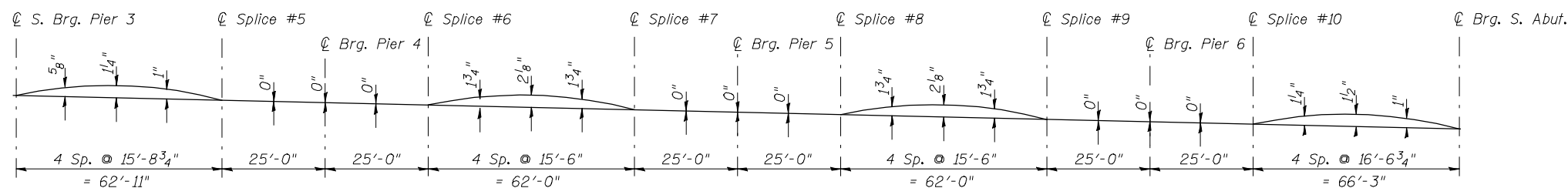
* TOP OF WEB ELEVATIONS

| Location | Girder 1 | Girder 2 | Girder 3 | Girder 4 | Girder 5 | Girder 6 |
|---------------------|----------|----------|----------|----------|----------|----------|
| ℄ S. Brg. at Pier 3 | 643.96 | 644.08 | 644.18 | 644.22 | 644.15 | 644.08 |
| ℄ Splice 5 | 642.89 | 643.01 | 643.11 | 643.14 | 643.04 | 642.93 |
| ℄ Brg. at Pier 4 | 642.36 | 642.48 | 642.58 | 642.61 | 642.51 | 642.40 |
| ℄ Splice 6 | 641.82 | 641.94 | 642.04 | 642.07 | 641.97 | 641.86 |
| ℄ Splice 7 | 640.19 | 640.31 | 640.41 | 640.44 | 640.34 | 640.23 |
| ℄ Brg. at Pier 5 | 639.41 | 639.53 | 639.63 | 639.66 | 639.56 | 639.45 |
| ℄ Splice 8 | 638.63 | 638.75 | 638.85 | 638.88 | 638.78 | 638.67 |
| ℄ Splice 9 | 636.39 | 636.51 | 636.61 | 636.64 | 636.54 | 636.43 |
| ℄ Brg. at Pier 6 | 635.42 | 635.54 | 635.63 | 635.67 | 635.57 | 635.46 |
| ℄ Splice 10 | 634.44 | 634.56 | 634.65 | 634.70 | 634.59 | 634.48 |
| ℄ Brg. at S. Abut. | 631.85 | 631.97 | 632.07 | 632.10 | 632.00 | 631.89 |

* For fabrication only

Notes:
All diaphragms shall be installed as steel is erected and secured with erection pins and bolts except as otherwise noted. Individual diaphragms at supports may be temporarily disconnected to install bearing anchor rods.

Load carrying components designated "NTR" shall conform to the Impact Testing Requirement, Zone 2.



CAMBER DIAGRAM