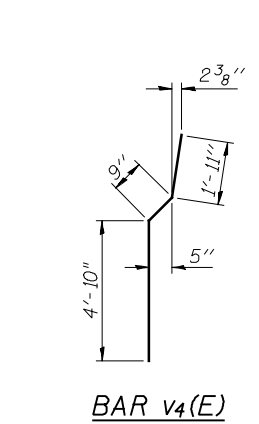
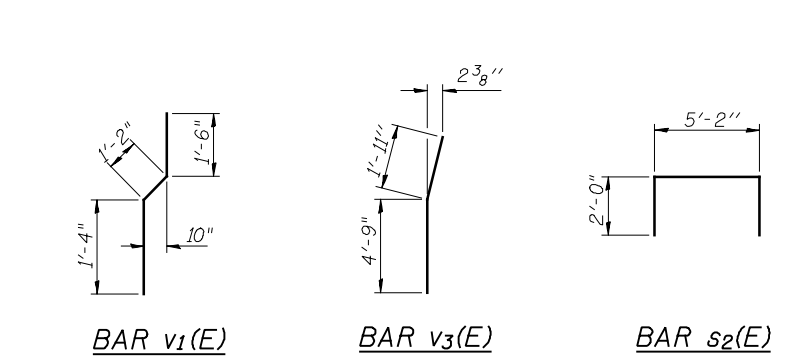
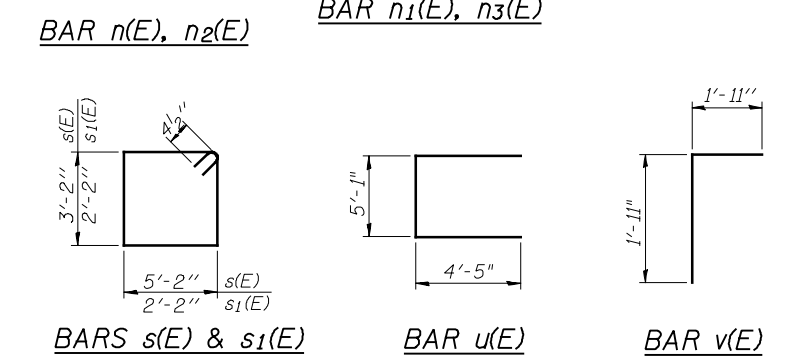
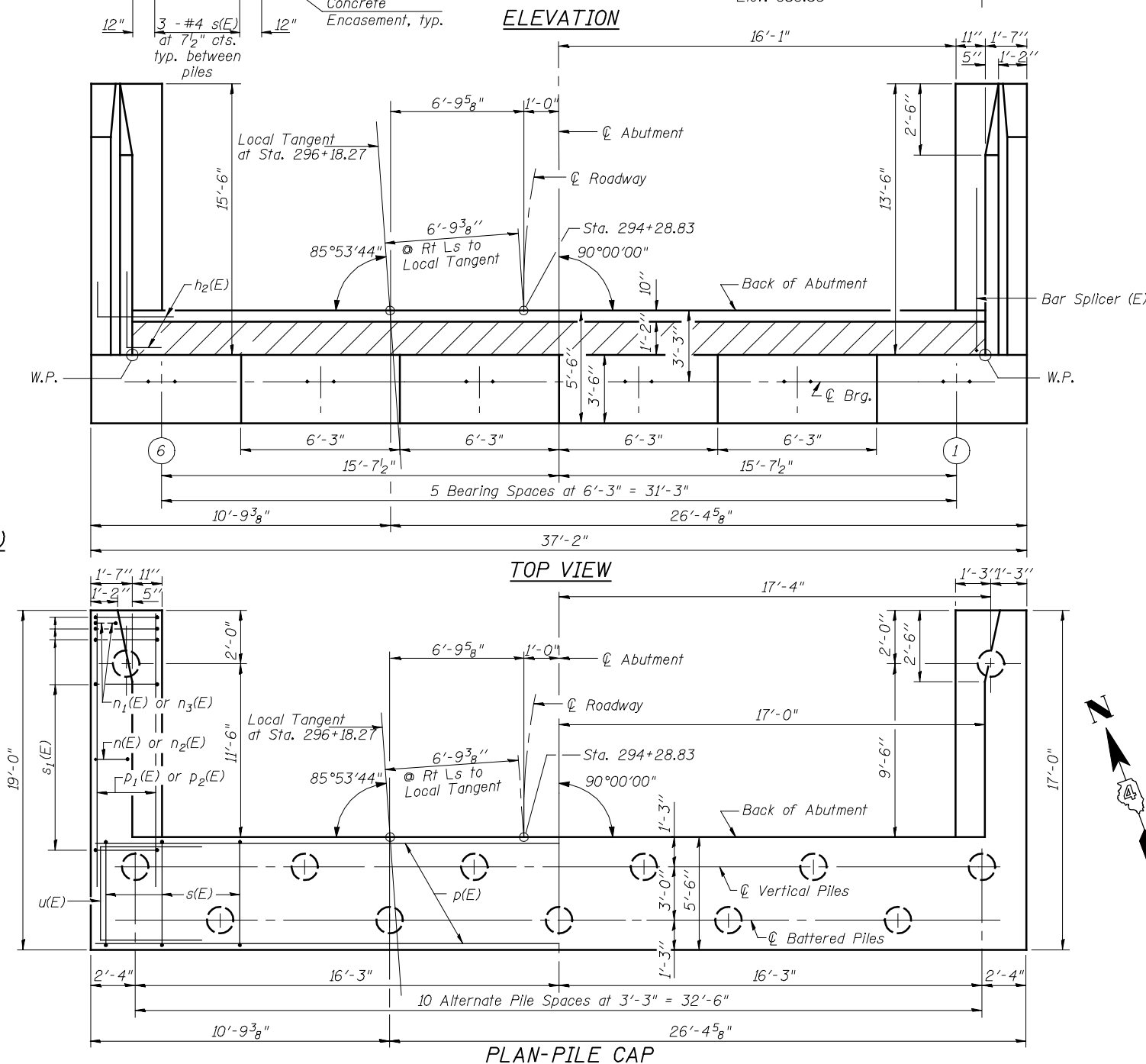


ANCHOR BOLT DETAIL



PILE DATA
 Type: Metal Shell 12" dia. x 0.250" Walls with Pile Shoes
 Nominal Required Bearing: 258k
 Factored Resistance Available: 142k
 Est. Length: 54'
 No. Production Piles: 12
 No. Test Piles: 1



NORTH ABUTMENT
BILL OF MATERIAL

Bar	No.	Size	Length	Shape
h(E)	8	#5	33'-9"	
h1(E)	5	#6	36'-10"	
h2(E)	24	#5	7'-9"	
h3(E)	11	#4	13'-3"	
h4(E)	7	#4	13'-3"	
h5(E)	12	#4	15'-3"	
h6(E)	8	#4	15'-3"	
h7(E)	5	#4	12'-3"	
h8(E)	5	#4	12'-0"	
n(E)	11	#6	12'-10"	
n1(E)	6	#6	6'-5"	
n2(E)	13	#6	15'-4"	
n3(E)	6	#6	7'-8"	
p(E)	12	#7	36'-10"	
p1(E)	6	#7	14'-6"	
p2(E)	6	#7	16'-6"	
s(E)	36	#4	17'-5"	
s1(E)	32	#4	9'-5"	
s2(E)	25	#4	9'-2"	
u(E)	9	#6	13'-11"	
v(E)	35	#5	3'-10"	
v1(E)	35	#4	4'-0"	
v2(E)	30	#6	7'-6"	
v3(E)	6	#6	6'-8"	
v4(E)	24	#6	7'-6"	
v5(E)	35	#5	6'-9"	
v6(E)	35	#5	8'-1"	
Structure Excavation	CU YD		142	
Concrete Structures	CU YD		57.0	
Reinforcement Bars, Epoxy Coated	POUND		5,520	
Furnishing Metal Shell Piles 12" x 0.250"	FOOT		648	
Driving Piles	FOOT		648	
Test Pile Metal Shells	EACH		1	
Pile Shoes	EACH		13	
Concrete Encasement	CU YD		6.0	
Concrete Sealer	SQ FT		444	
Bar Splicers	EACH		35	

For details of Bar Splicers, see sheet 54 of 62.
 For details of piles and Concrete Encasement, see sheet 53 of 62.