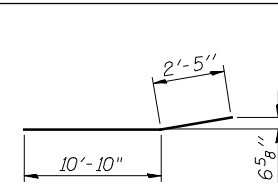
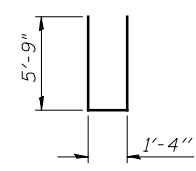


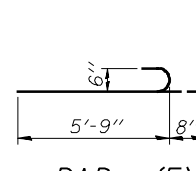
BAR h₂(E)



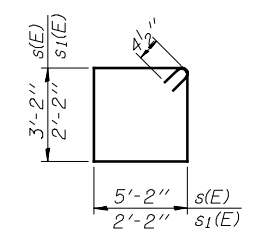
BAR h₄(E)



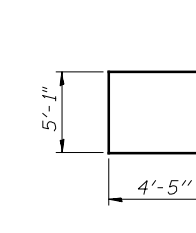
BAR n(E)



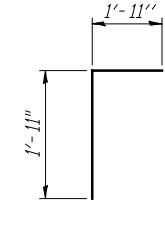
BAR n₁(E)



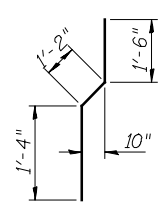
BARS s(E) & s₁(E)



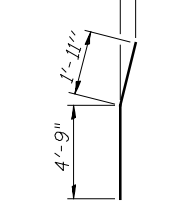
BAR u(E)



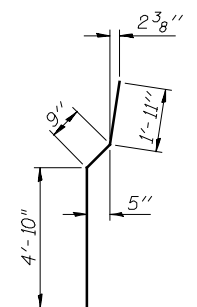
BAR v(E)



BAR v₁(E)



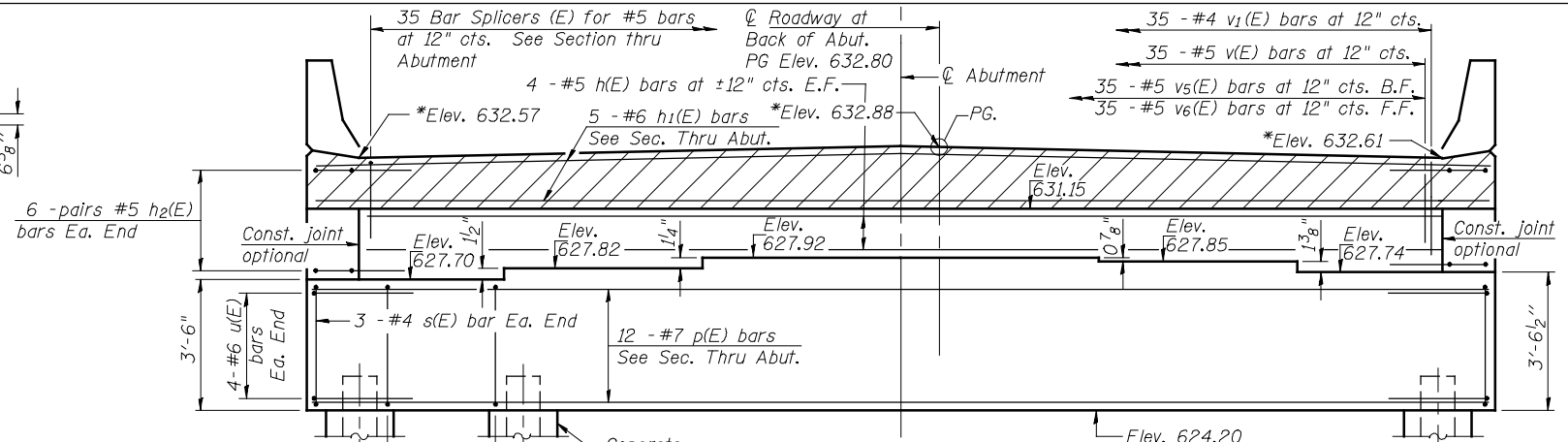
BAR v₃(E)



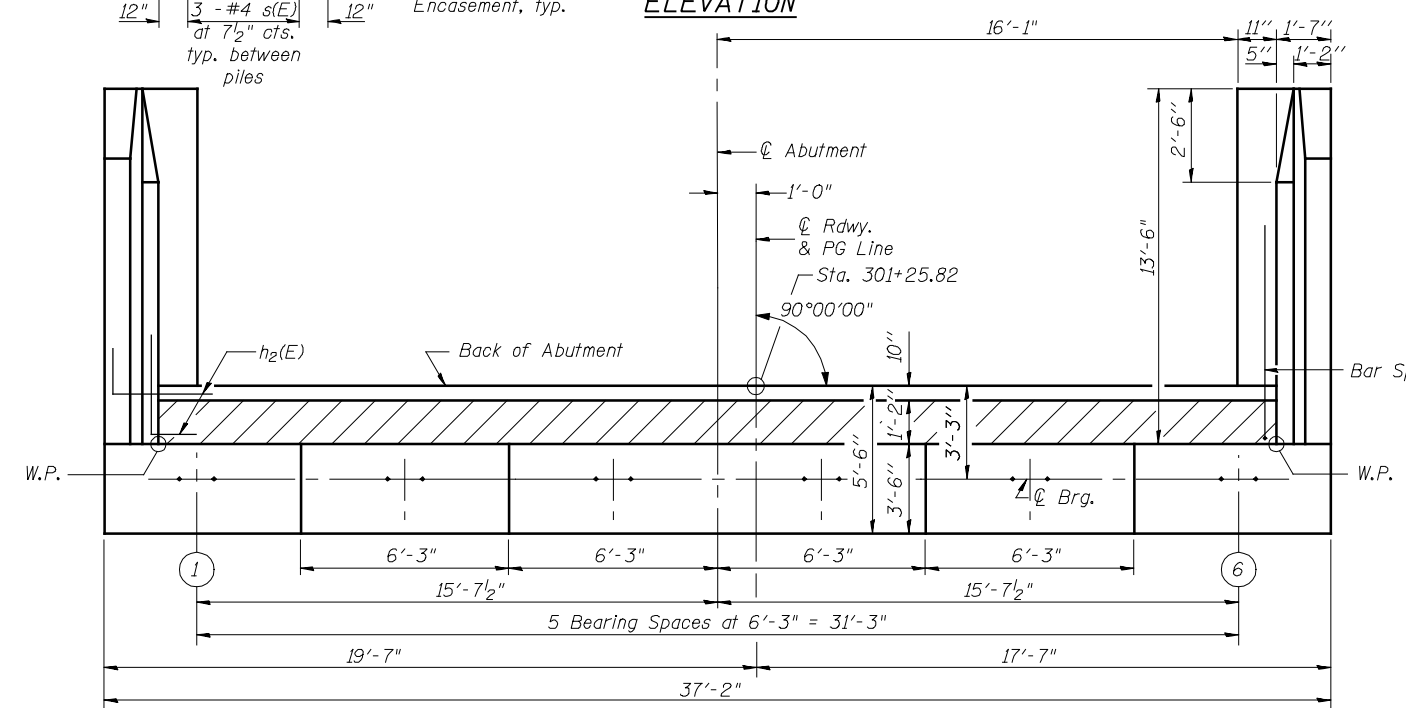
BAR v₄(E)

PILE DATA

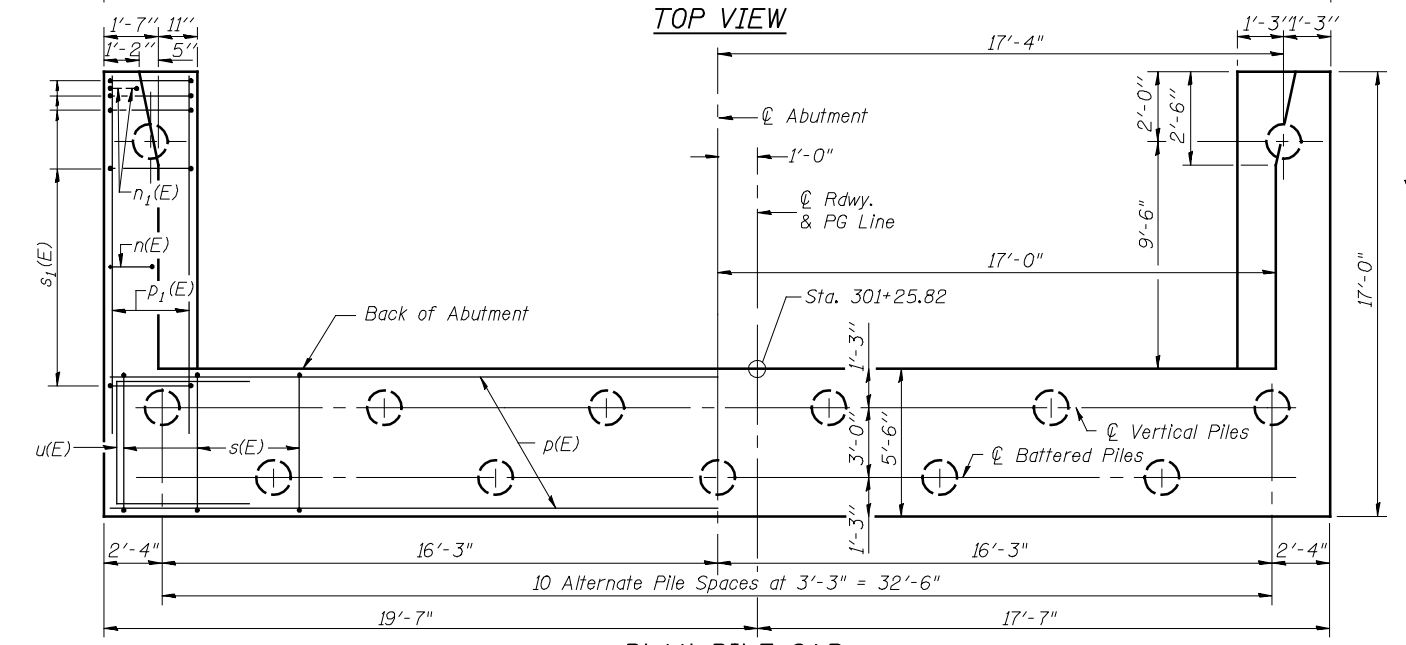
Type: Metal Shell 12" dia. x 0.250" Walls with Pile Shoes
 Nominal Required Bearing: 268^k
 Factored Resistance Available: 147^k
 Est. Length: 44'
 No. Production Piles: 12
 No. Test Piles: 1



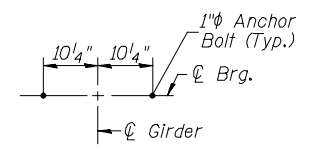
ELEVATION



TOP VIEW



PLAN-PILE CAP



ANCHOR BOLT DETAIL

SOUTH ABUTMENT BILL OF MATERIAL

Bar	No.	Size	Length	Shape
h(E)	8	#5	33'-9"	
h ₁ (E)	5	#6	36'-10"	
h ₂ (E)	24	#5	7'-9"	
h ₃ (E)	22	#4	13'-3"	
h ₄ (E)	14	#4	13'-3"	
n(E)	22	#6	12'-10"	
n ₁ (E)	12	#6	6'-5"	
p(E)	12	#7	36'-10"	
p ₁ (E)	12	#7	14'-6"	
s(E)	36	#4	17'-5"	
s ₁ (E)	30	#4	9'-5"	
u(E)	8	#6	13'-11"	
v(E)	35	#5	3'-10"	
v ₁ (E)	35	#4	4'-0"	
v ₂ (E)	28	#6	7'-6"	
v ₃ (E)	6	#6	6'-8"	
v ₄ (E)	22	#6	7'-6"	
v ₅ (E)	35	#5	6'-9"	
v ₆ (E)	35	#5	8'-1"	
Structure Excavation	CU YD		131	
Concrete Structures	CU YD		50.1	
Reinforcement Bars, Epoxy Coated	POUND		5,060	
Furnishing Metal Shell Piles 12" x 0.250"	FOOT		528	
Driving Piles	FOOT		528	
Test Pile Metal Shells	EACH		1	
Pile Shoes	EACH		13	
Concrete Encasement	CU YD		6.0	
Concrete Sealer	SQ FT		416	
Bar Splicers	EACH		35	

For details of Bar Splicers, see sheet 54 of 62.
 For details of piles and Concrete Encasement, see sheet 53 of 62.