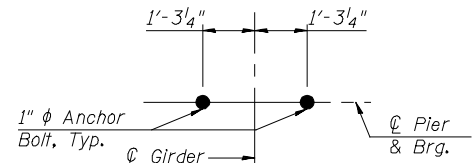
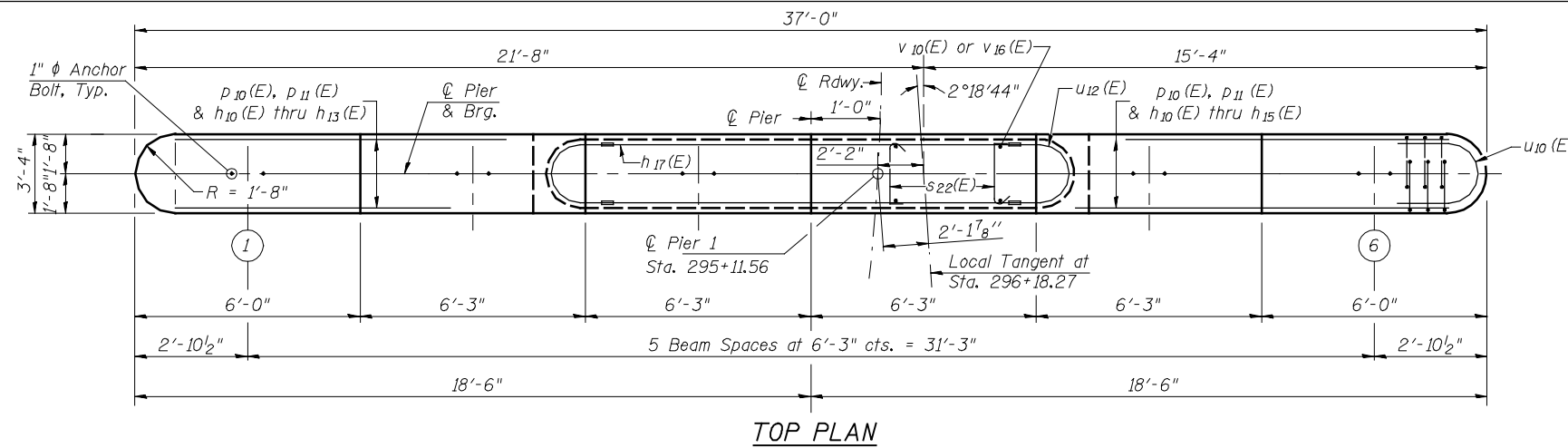


Notes:

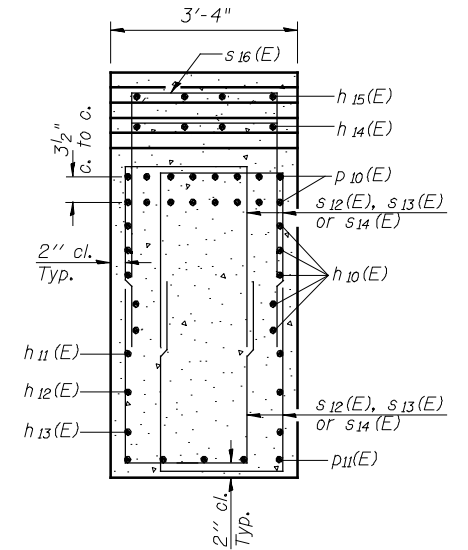
Space reinforcement in cap to miss anchor bolts.
 Pour steps monolithically with cap.
 For details of piles, see sheet 53 of 62.



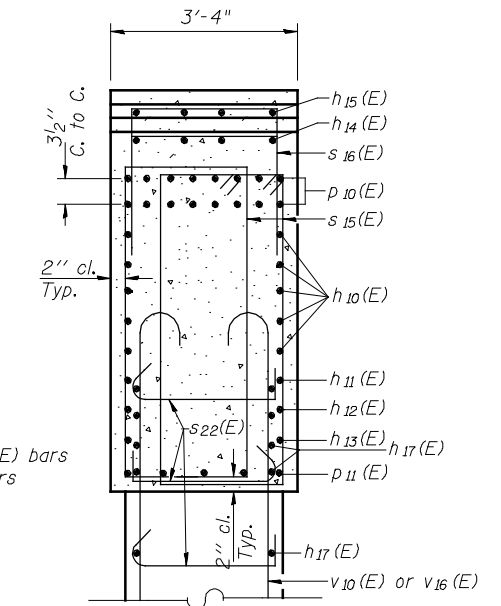
ANCHOR BOLT DETAIL



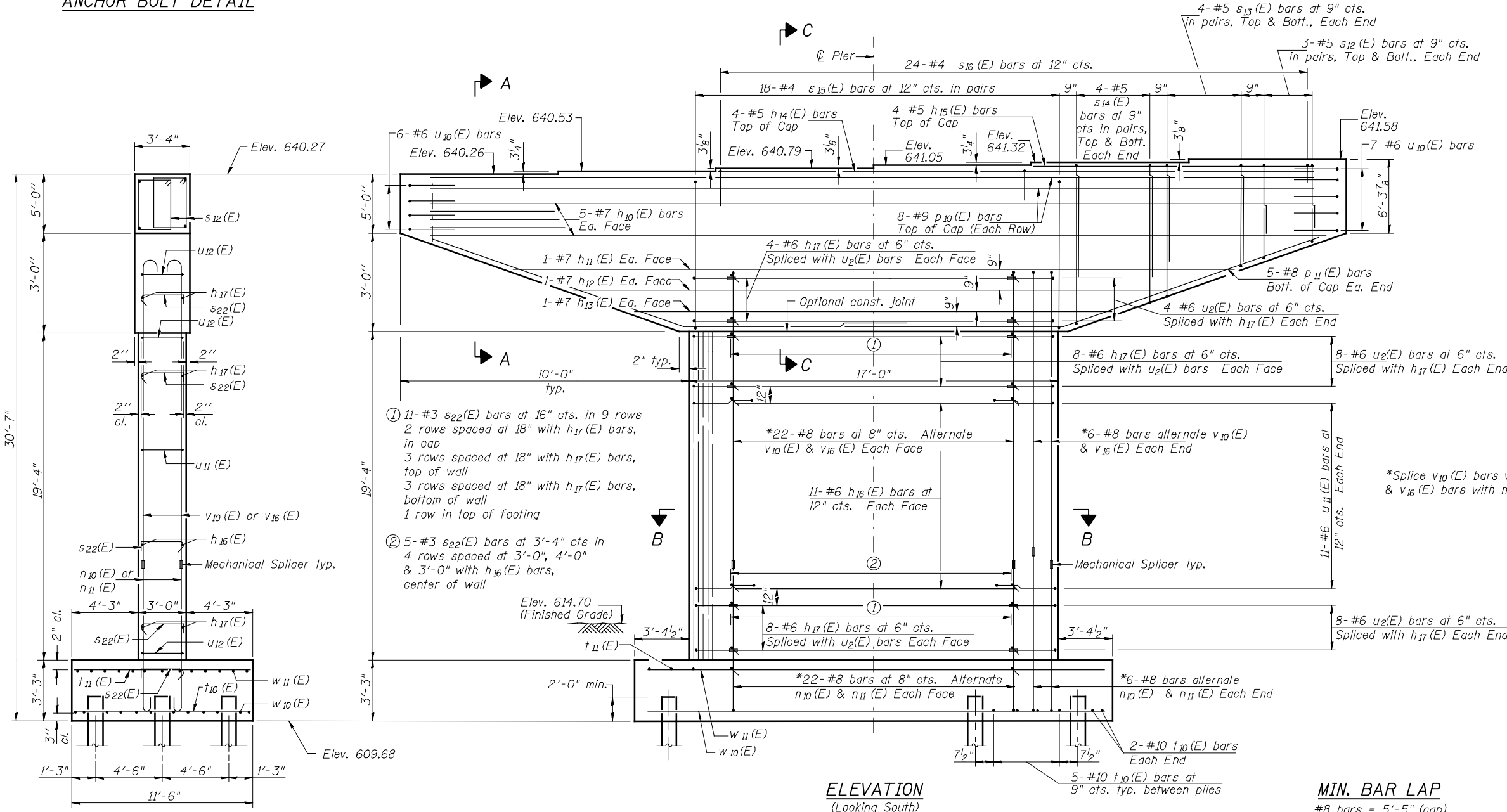
TOP PLAN



SECTION A-A



SECTION C-C



ELEVATION
(Looking South)

MIN. BAR LAP
 #8 bars = 5'-5" (cap)

PILE DATA

Type: Metal Shell 14" dia. x 0.312" Walls with Pile Shoes
 Nominal Required Bearing: 446k
 Factored Resistance Available: 245k
 Est. Length: 49'
 No. Production Piles: 17
 No. Test Piles: 1

Hutchison Engineering, Inc.
 Jacksonville, Peoria, & Shorewood, Illinois

USER NAME = jdean
 PLOT SCALE = NONE
 PLOT DATE = 7/25/2013
 DESIGNED - JOH
 CHECKED - BAN
 DRAWN - TAC
 CHECKED - JOH/BAN

REVISED -
 REVISED -
 REVISED -
 REVISED -

STATE OF ILLINOIS
DEPARTMENT OF TRANSPORTATION

PIER 1 DETAILS
STRUCTURE NO. 062-0086

SHEET NO. 41 OF 62 SHEETS

| F.A.P. RTE. | SECTION | COUNTY | TOTAL SHEETS | SHEET NO. |
|-------------|------------|----------|--------------|--------------------|
| 698 | (125VBR)BR | MARSHALL | 148 | 66 |
| | | | | CONTRACT NO. 68580 |

ILLINOIS FED. AID PROJECT