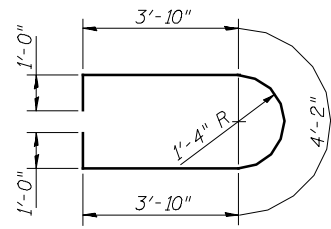
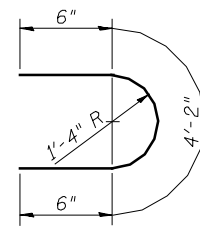


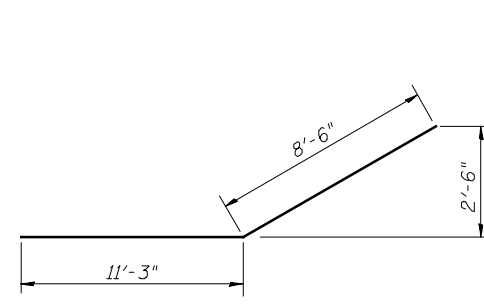
BAR $u_{10}(E)$



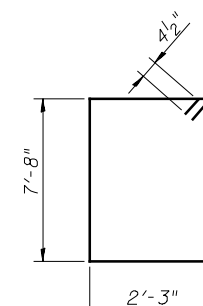
BAR $u_{11}(E)$



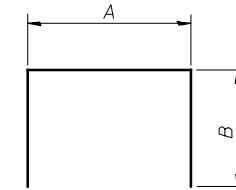
BAR $u_{12}(E)$



BAR $p_{11}(E)$



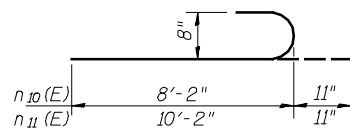
BAR $s_{15}(E)$



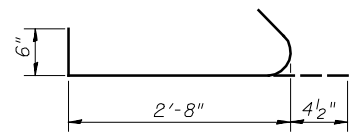
BARS $s_{12}(E)$, $s_{13}(E)$, $s_{14}(E)$, & $s_{16}(E)$

A & B DIMENSIONS

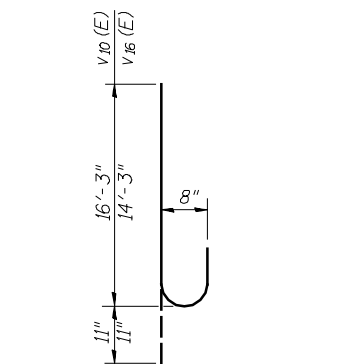
Bar	A	B
$s_{12}(E)$	2'-3"	4'-1"
$s_{13}(E)$	2'-3"	4'-7"
$s_{14}(E)$	2'-3"	5'-3"
$s_{16}(E)$	3'-0"	1'-3"



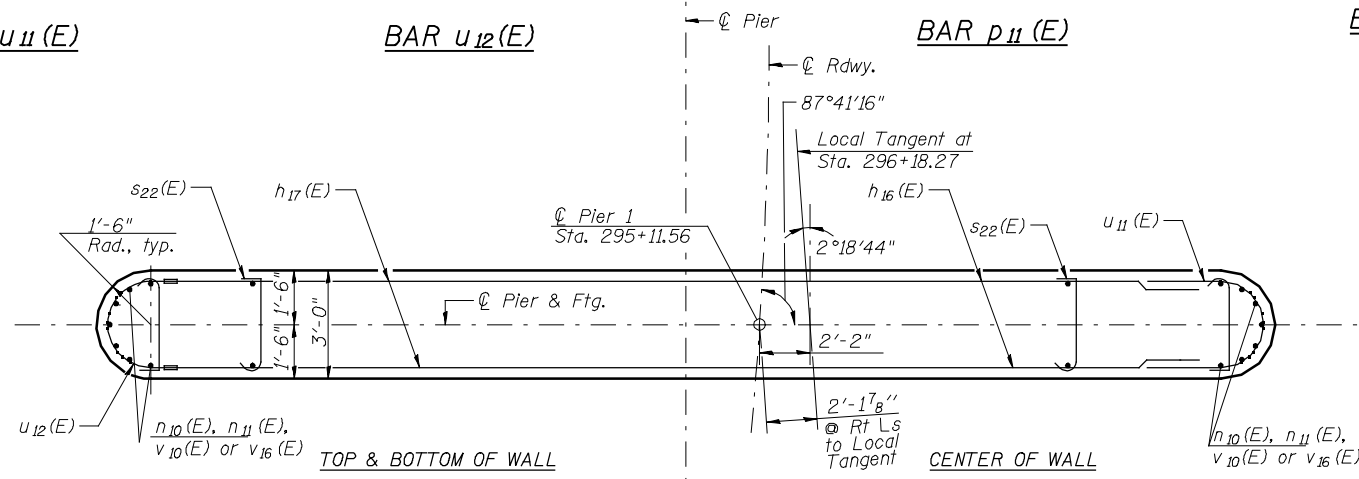
BAR $n_{10}(E)$ & $n_{11}(E)$



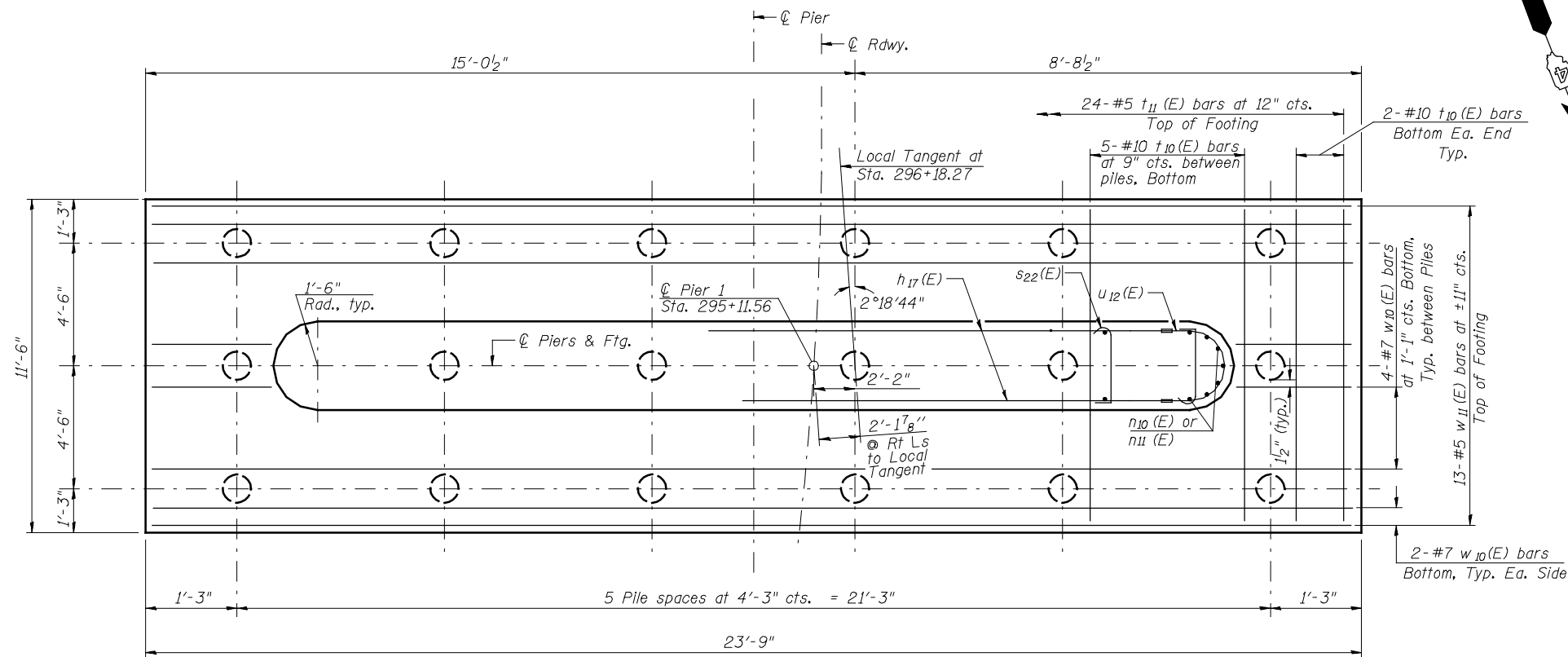
BAR $s_{22}(E)$



BAR $v_{10}(E)$ & $v_{16}(E)$



SECTION B-B



FOOTING PLAN

PIER 1
BILL OF MATERIAL

Bar	No.	Size	Length	Shape
$h_{10}(E)$	10	#7	33'-8"	—
$h_{11}(E)$	2	#7	31'-8"	—
$h_{12}(E)$	2	#7	27'-0"	—
$h_{13}(E)$	2	#7	22'-0"	—
$h_{14}(E)$	4	#5	22'-9"	—
$h_{15}(E)$	4	#5	10'-1"	—
$h_{16}(E)$	22	#6	14'-0"	—
$h_{17}(E)$	40	#6	13'-0"	—
$n_{10}(E)$	28	#8	9'-1"	U
$n_{11}(E)$	28	#8	11'-1"	U
$p_{10}(E)$	16	#9	33'-8"	—
$p_{11}(E)$	10	#8	19'-9"	—
$s_{12}(E)$	24	#5	10'-5"	□
$s_{13}(E)$	32	#5	11'-5"	□
$s_{14}(E)$	32	#5	12'-9"	□
$s_{15}(E)$	36	#4	20'-7"	□
$s_{16}(E)$	24	#4	5'-6"	□
$s_{22}(E)$	119	#3	3'-7"	U
$t_{10}(E)$	29	#10	11'-2"	—
$t_{11}(E)$	24	#5	11'-2"	—
$u_{10}(E)$	13	#6	12'-3"	U
$u_{11}(E)$	22	#6	13'-10"	U
$u_{12}(E)$	40	#6	5'-2"	U
$v_{10}(E)$	28	#8	17'-2"	U
$v_{16}(E)$	28	#8	15'-2"	U
$w_{10}(E)$	12	#7	23'-5"	—
$w_{11}(E)$	13	#5	23'-5"	—
Structure Excavation		CU YD		80
Concrete Structures		CU YD		102.7
Reinforcement Bars, Epoxy Coated		POUND		14,070
Furnishing Metal Shell Piles 14" x 0.312"		FOOT		833
Driving Piles		FOOT		833
Test Pile Metal Shells		EACH		1
Pile Shoes		EACH		18