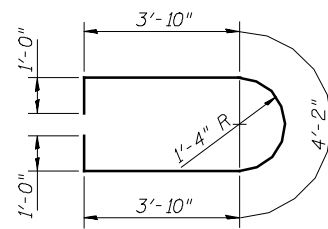
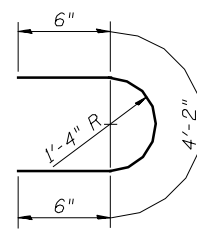


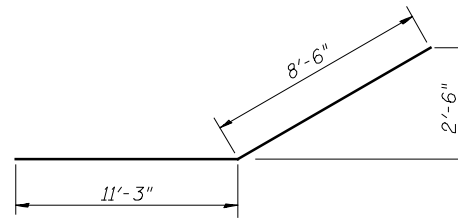
BAR  $u_{13}(E)$



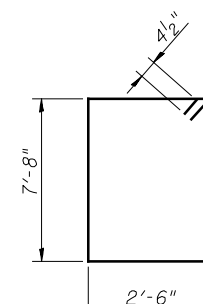
BAR  $u_{11}(E)$



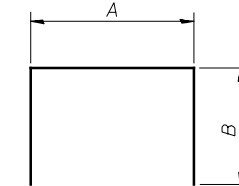
BAR  $u_{12}(E)$



BAR  $p_{11}(E)$



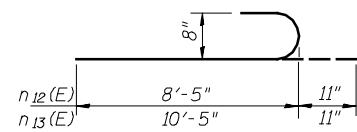
BAR  $s_{20}(E)$



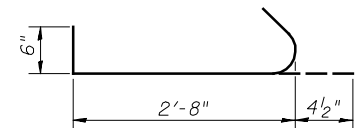
BARS  $s_{17}(E)$ ,  $s_{18}(E)$ ,  $s_{19}(E)$ , &  $s_{21}(E)$

A & B DIMENSIONS

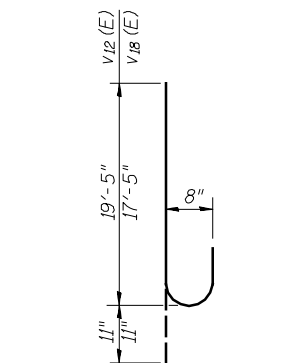
Bar	A	B
$s_{17}(E)$	2'-6"	4'-1"
$s_{18}(E)$	2'-6"	4'-7"
$s_{19}(E)$	2'-6"	5'-3"
$s_{21}(E)$	1'-10"	1'-3"



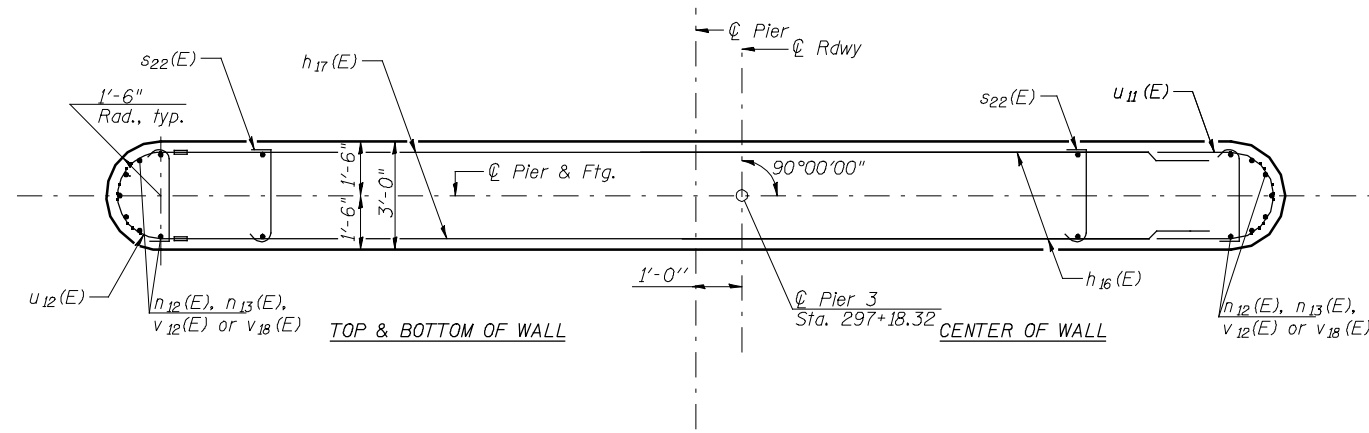
BAR  $n_{12}(E)$  &  $n_{13}(E)$



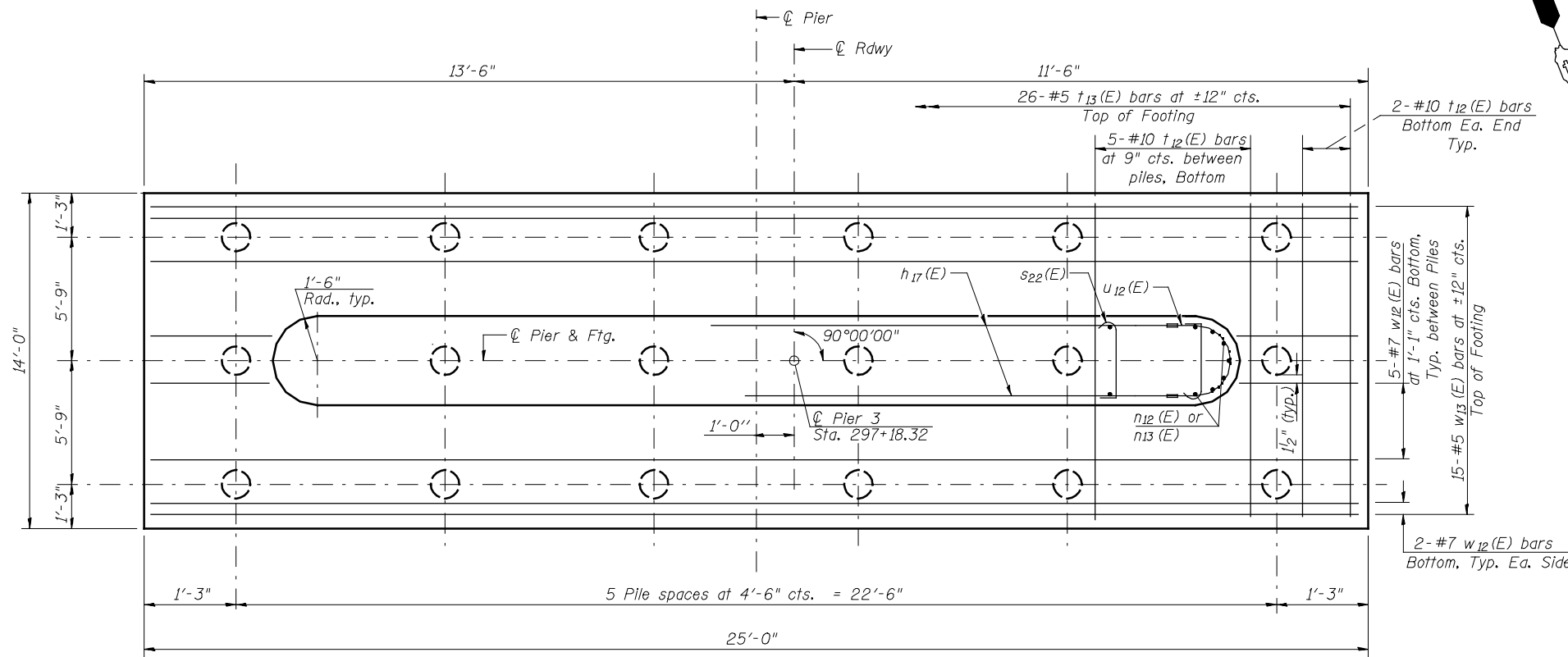
BAR  $s_{22}(E)$



BAR  $v_{12}(E)$  &  $v_{18}(E)$



SECTION B-B



FOOTING PLAN

PIER 3  
BILL OF MATERIAL

Bar	No.	Size	Length	Shape
$h_{10}(E)$	10	#7	33'-8"	—
$h_{11}(E)$	2	#7	31'-8"	—
$h_{12}(E)$	2	#7	27'-0"	—
$h_{13}(E)$	2	#7	22'-0"	—
$h_{16}(E)$	28	#6	14'-0"	—
$h_{17}(E)$	44	#6	13'-0"	—
$h_{19}(E)$	3	#5	29'-2"	—
$n_{12}(E)$	28	#8	9'-4"	U
$n_{13}(E)$	28	#8	11'-4"	U
$p_{10}(E)$	16	#9	33'-8"	—
$p_{11}(E)$	12	#8	19'-9"	—
$s_{17}(E)$	24	#5	10'-8"	□
$s_{18}(E)$	32	#5	11'-8"	□
$s_{19}(E)$	32	#5	13'-0"	□
$s_{20}(E)$	36	#4	21'-1"	□
$s_{21}(E)$	30	#4	4'-4"	□
$s_{22}(E)$	124	#3	3'-7"	U
$t_{12}(E)$	29	#10	13'-8"	—
$t_{13}(E)$	26	#5	13'-8"	—
$u_{11}(E)$	28	#6	13'-10"	U
$u_{12}(E)$	44	#6	5'-2"	U
$u_{13}(E)$	12	#6	13'-10"	U
$v_{12}(E)$	28	#8	20'-4"	U
$v_{18}(E)$	28	#8	18'-4"	U
$w_{12}(E)$	14	#7	24'-8"	—
$w_{13}(E)$	15	#5	24'-8"	—
Structure Excavation			CU YD	83
Concrete Structures			CU YD	130.3
Reinforcement Bars, Epoxy Coated			POUND	15,650
Furnishing Metal Shell Piles 14"x 0.312"			FOOT	493
Driving Piles			FOOT	493
Test Pile Metal Shells			EACH	1
Pile Shoes			EACH	18
Concrete Sealer			SQ FT	1,710

