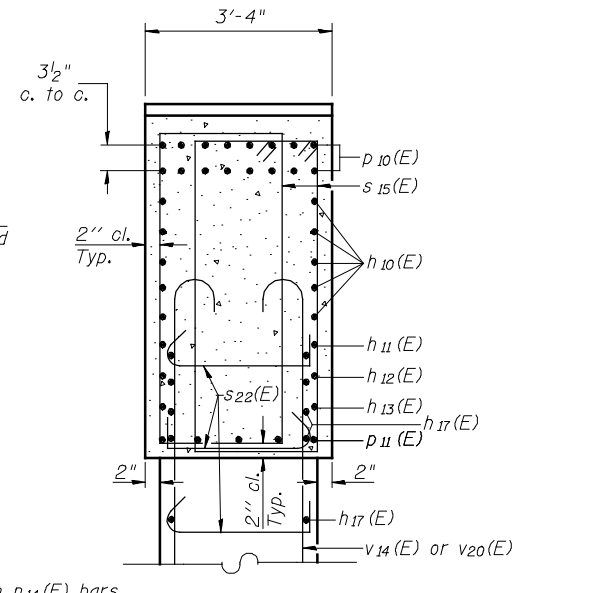
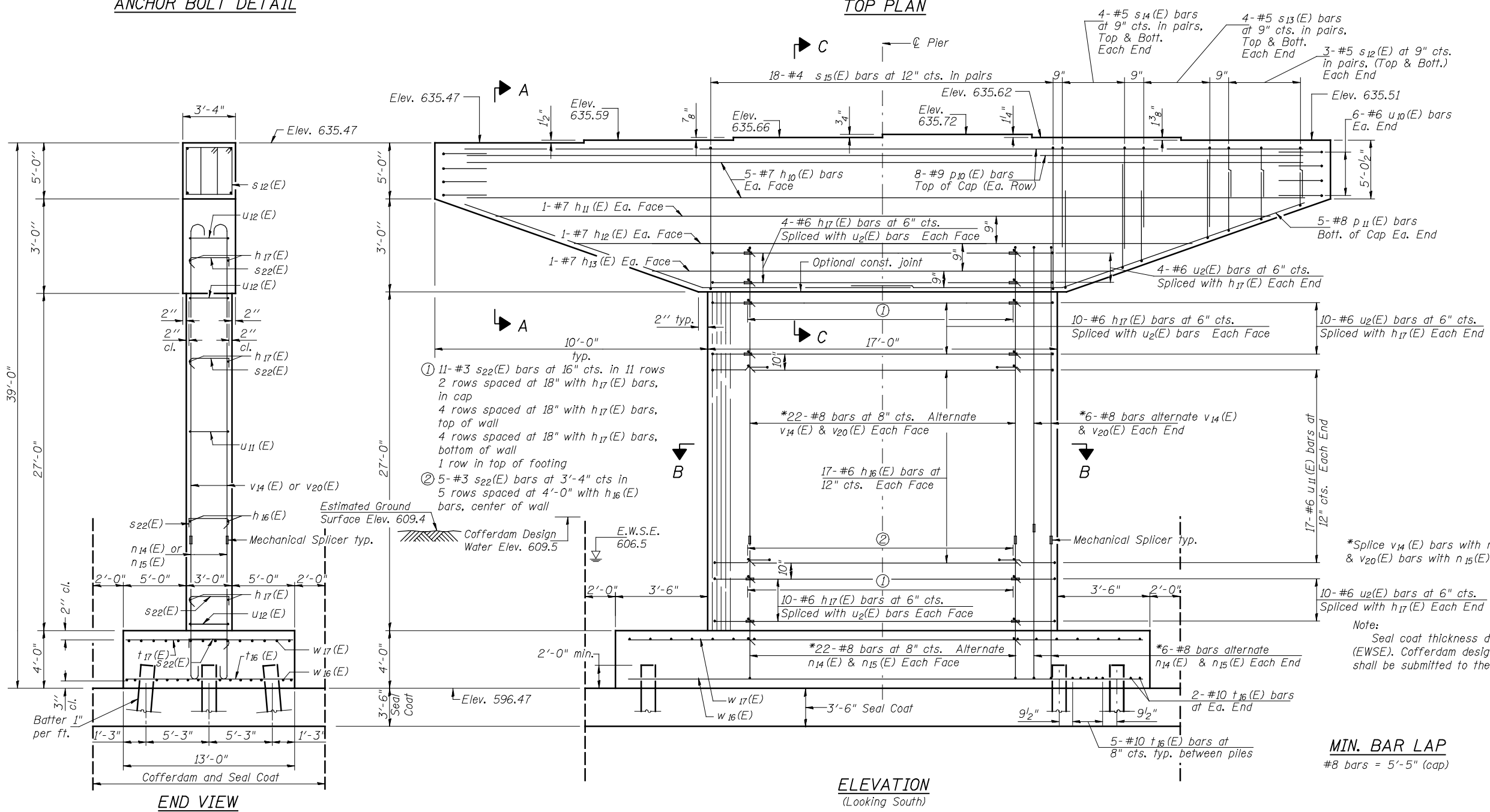
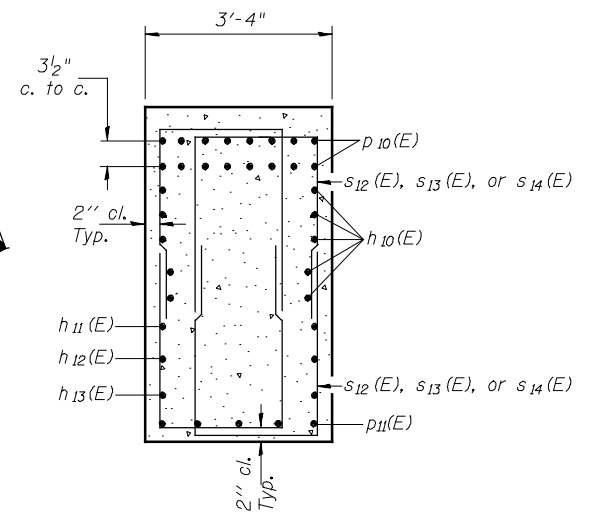
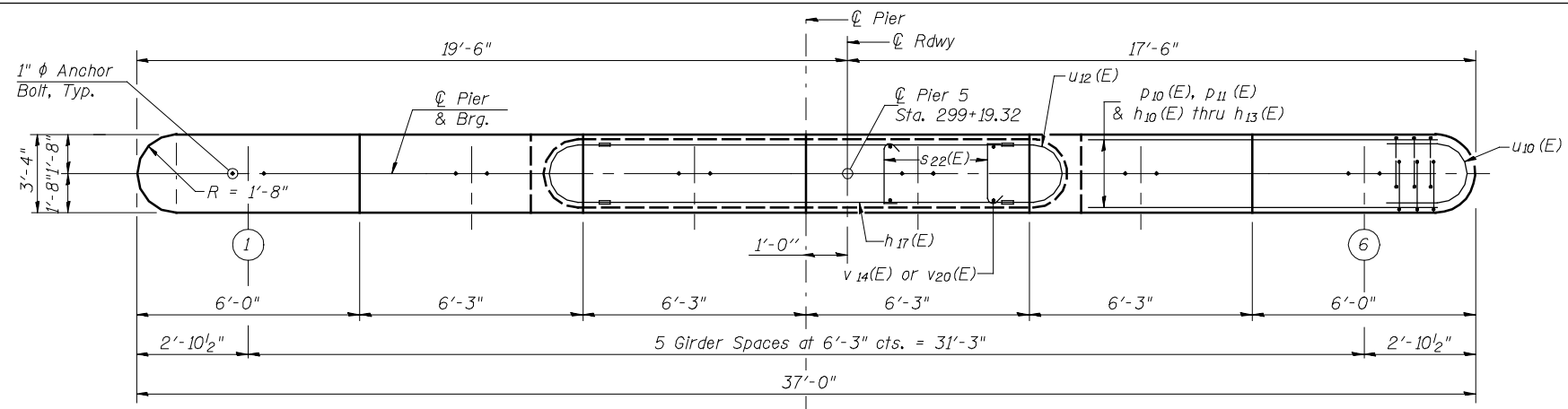
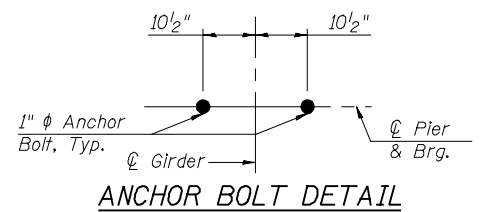


Notes:
 Space reinforcement in cap to miss anchor bolts.
 Pour steps monolithically with cap.
 For details of piles, see sheet 53 of 62.



Note:
 Seal coat thickness design is based on the Estimated Water Surface Elevation (EWSE). Cofferdam design details and proposed changes in seal coat thickness shall be submitted to the Engineer for approval with the cofferdam design.

PILE DATA

Type: Metal Shell 14" dia. x 0.312" Walls with Pile Shoes
 Nominal Required Bearing: 464k
 Factored Resistance Available: 255k
 Est. Length: 29'
 No. Production Piles: 17
 No. Test Piles: 1

MIN. BAR LAP
 #8 bars = 5'-5" (cap)

Hutchison Engineering, Inc.
 Jacksonville, Peoria, & Shorewood, Illinois

USER NAME = jdean
 PLOT SCALE = NONE
 PLOT DATE = 7/25/2013

DESIGNED - JOH
 CHECKED - BAN
 DRAWN - TAC
 CHECKED - JOH/BAN

REVISED -
 REVISED -
 REVISED -
 REVISED -

STATE OF ILLINOIS
DEPARTMENT OF TRANSPORTATION

PIER 5 DETAILS
STRUCTURE NO. 062-0086

SHEET NO. 49 OF 62 SHEETS

F.A.P. RTE. 698	SECTION 125(VB)RBR	COUNTY MARSHALL	TOTAL SHEETS 148	SHEET NO. 74
ILLINOIS FED. AID PROJECT			CONTRACT NO. 68580	