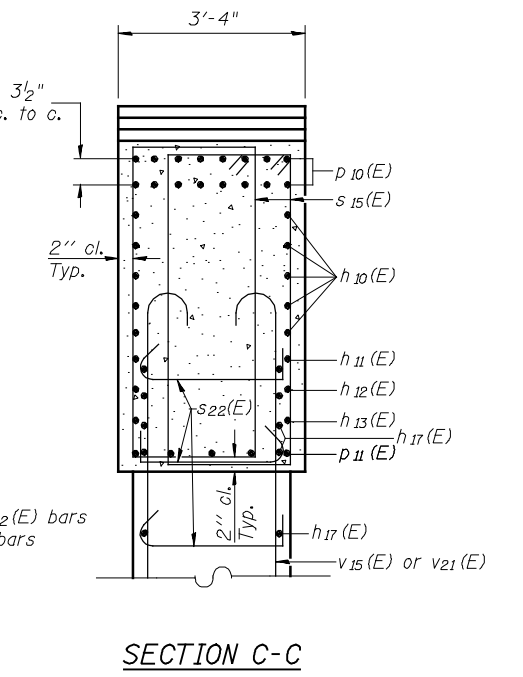
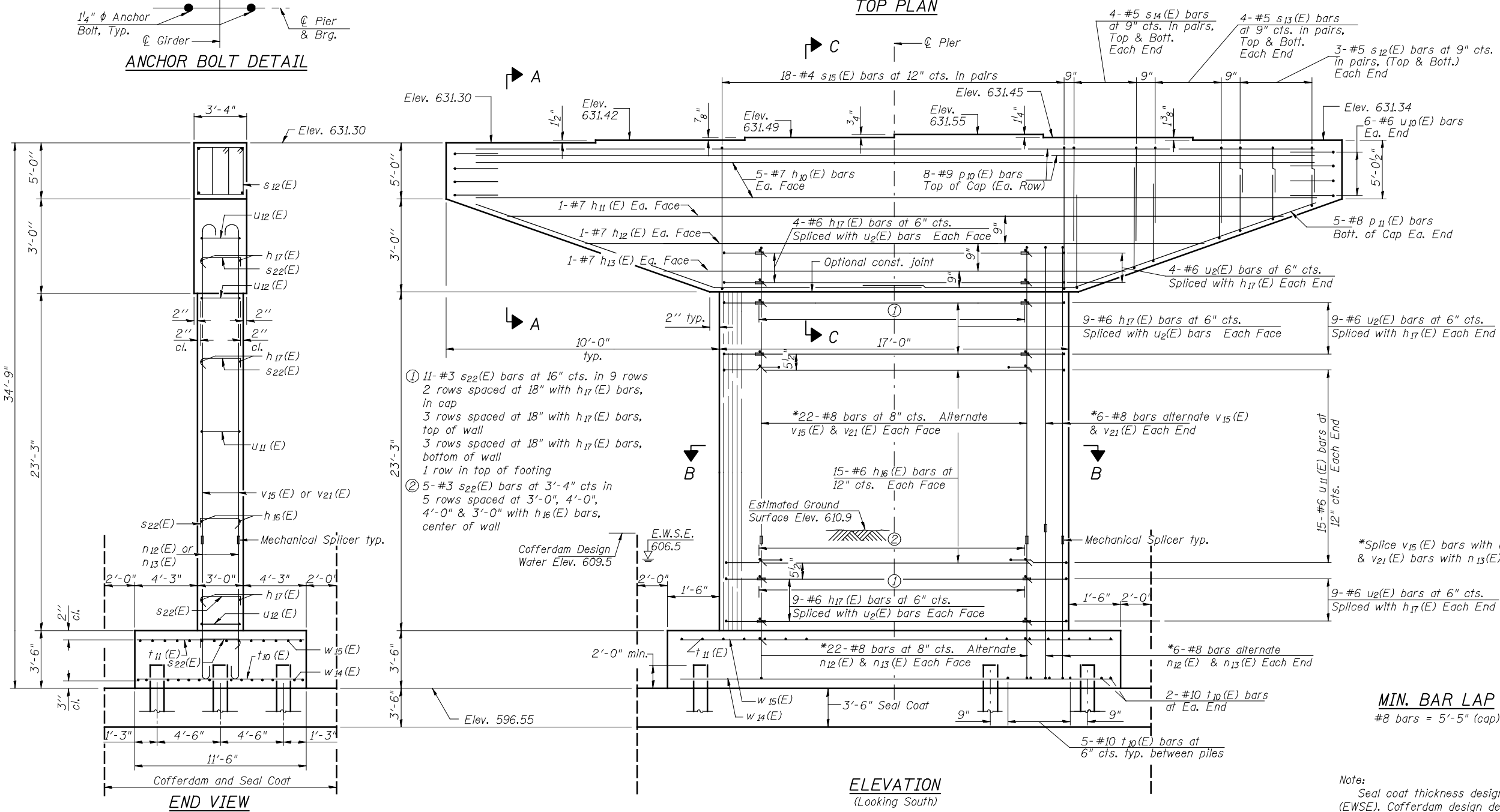
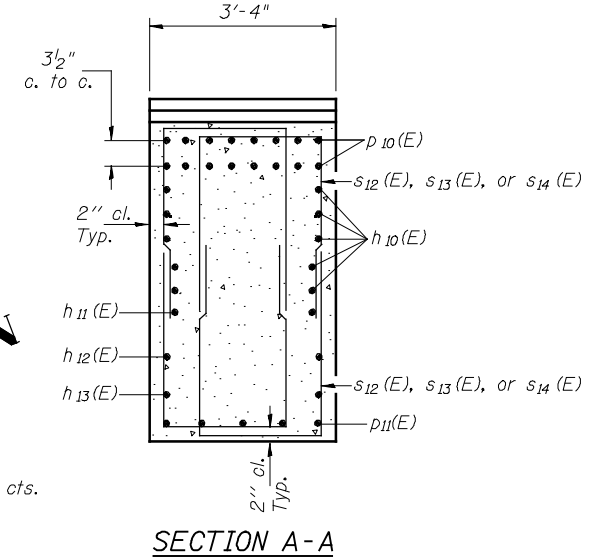
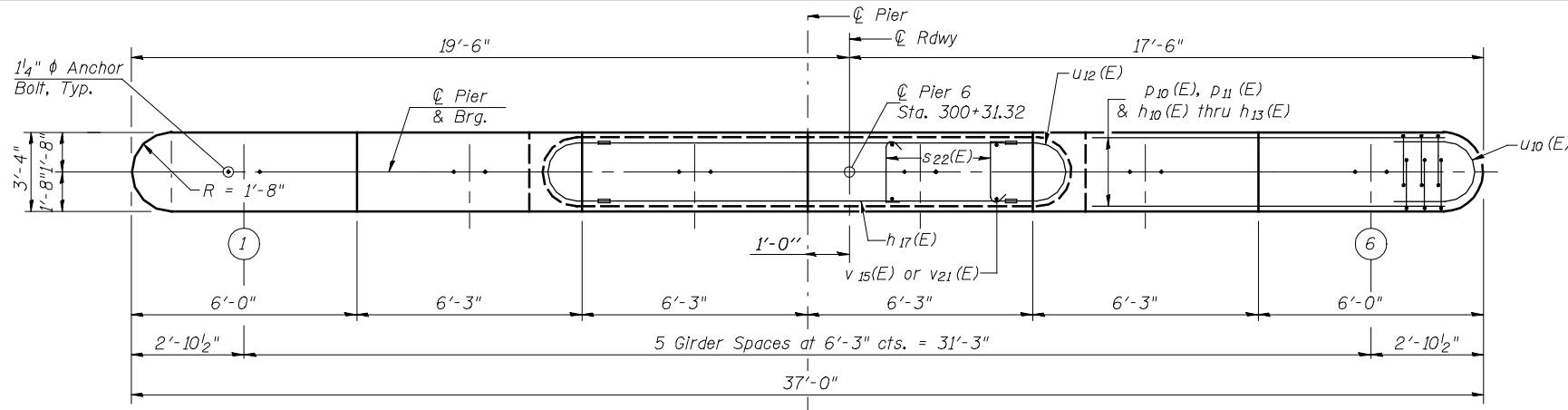
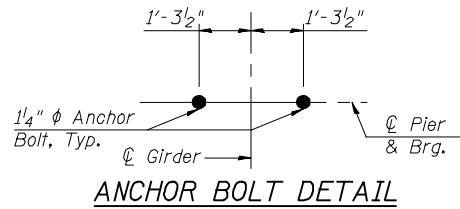


Notes:

Space reinforcement in cap to miss anchor bolts.
 Pour steps monolithically with cap.
 For details of piles, see sheet 53 of 62.

PILE DATA

Type: Metal Shell 14" dia. x 0.312" Walls with Pile Shoes
 Nominal Required Bearing: 497^k
 Factored Resistance Available: 274^k
 Est. Length: 42'
 No. Production Piles: 17
 No. Test Piles: 1



MIN. BAR LAP
 #8 bars = 5'-5" (cap)

Note:
 Seal coat thickness design is based on the Estimated Water Surface Elevation (EWSE). Cofferdam design details and proposed changes in seal coat thickness shall be submitted to the Engineer for approval with the cofferdam design.

Hutchison Engineering, Inc.
 Jacksonville, Peoria, & Shorewood, Illinois

USER NAME = jdean	DESIGNED - JOH	REVISD -
PLOT SCALE = NONE	CHECKED - BAN	REVISD -
PLOT DATE = 7/25/2013	DRAWN - TAC	REVISD -
	CHECKED - JOH/BAN	REVISD -

STATE OF ILLINOIS
DEPARTMENT OF TRANSPORTATION

PIER 6 DETAILS
STRUCTURE NO. 062-0086

F.A.P. RTE. 698	SECTION 125(VB)RBR	COUNTY MARSHALL	TOTAL SHEETS 148	SHEET NO. 76
			CONTRACT NO. 68580	
ILLINOIS FED. AID PROJECT				