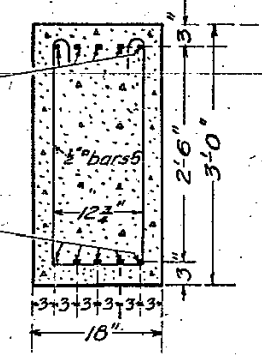
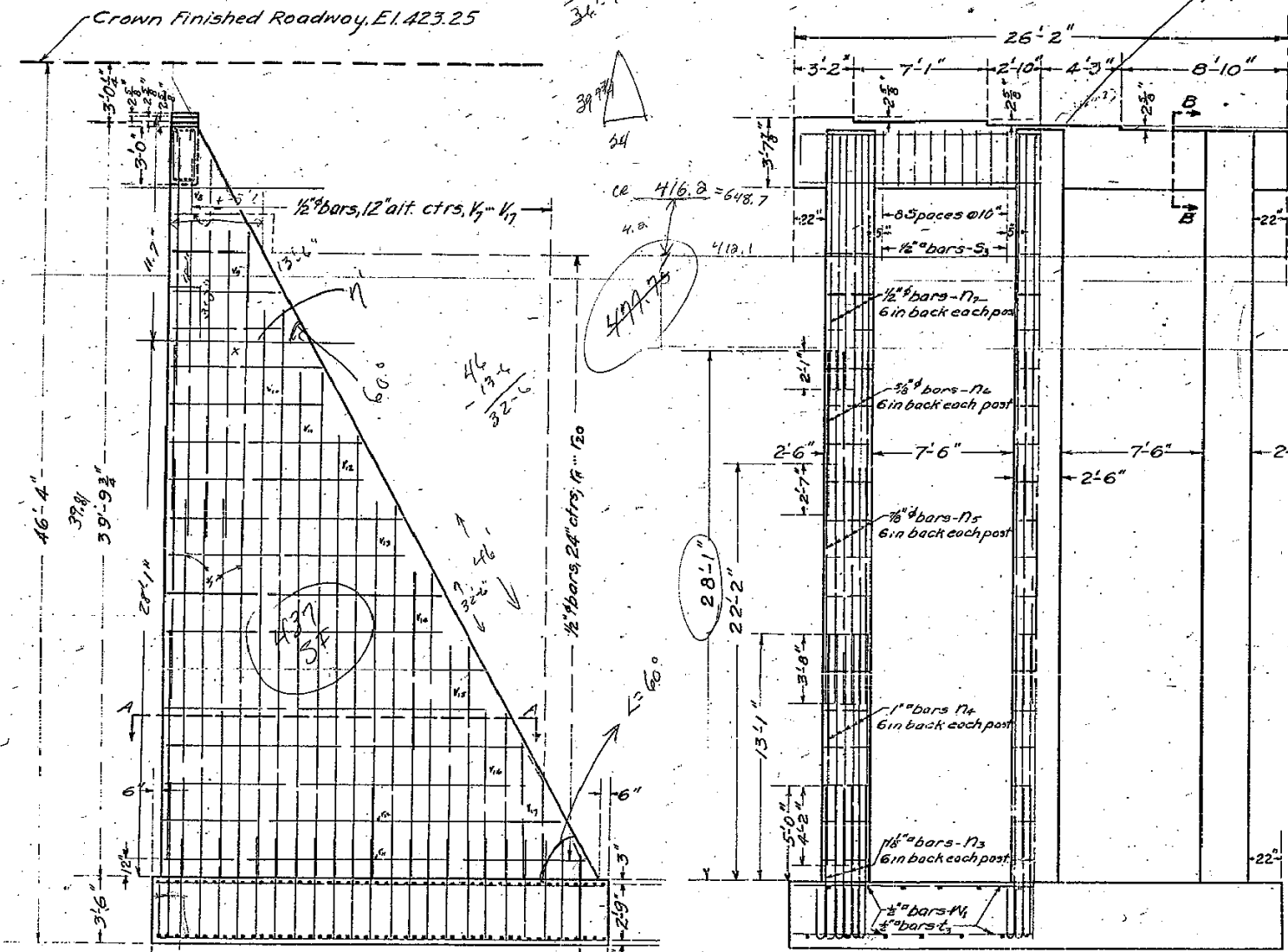


B.M. #44 S&W in roof 24" Millon  
75' Lt. Sta. 298+75, EL. 380.68

STATE OF ILLINOIS  
DEPARTMENT OF PUBLIC WORKS & BUILDINGS  
DIVISION OF HIGHWAYS

ROAD DISTRICT	SEC.	COUNTY	TOTAL SHEETS	SHEET NO.
89	125-B	Marshall	18	11

SHEET N  
15 SHEETS



SECTION B-B

Note:  
Class X Concrete shall be used throughout.  
All reinforcing steel shall be wired securely in place before concrete is poured.

BILL OF MATERIAL  
NORTH ABUTMENT

Bars	No.	Size	Length	Bars	No.	Size	Length
O5	5	1/2"	28'-7"	V16	6	1/2"	6'-9"
O6	5	"	25'-9"	V17	6	"	7'-0"
N3	18	1/2"	9'-9"	O3	66	"	5'-3"
N2	18	1/2"	12'-3"	N1	6	"	23'-6"
N3	18	1/2"	12'-9"	N2	6	"	22'-6"
N6	18	3/8"	8'-6"	N3	12	"	20'-6"
N7	18	1/2"	13'-6"	N4	12	"	18'-6"
V7	12	"	20'-0"	N5	12	"	16'-0"
V8	6	"	20'-0"	N6	12	"	14'-0"
V9	6	"	16'-0"	N7	6	"	22'-0"
V10	6	"	30'-0"	N8	6	"	17'-6"
V11	6	"	26'-9"	N9	6	"	13'-6"
V12	6	"	23'-6"	N10	6	"	9'-0"
V13	6	"	20'-0"	S3	18	1/2"	9'-0"
V14	6	"	16'-0"	W1	27	1/2"	23'-6"
V15	6	"	12'-6"	T3	96	1/2"	25'-9"

Concrete Class X (Spans) Cu. Yds. 219.6  
Reinforcing Steel - lbs. 7410

TAN θ = 39.8 / 34  
θ = 58.9°  
TAN φ = 11.7 / 14.0  
φ = 40.0°

END ELEVATION

FRONT ELEVATION

SECTION A-A

PLAN

COMPUTED - C.E. Morgan  
CHECKED - H.K. Davis  
DRAWN - C.E. Morgan  
CHECKED - M.J.D.  
ASSEMBLED -  
CHECKED -  
EXAMINED June 3, 2013  
PASSED  
APPROVED  
CHIEF HIGHWAY ENGINEER

NORTH ABUTMENT  
BRIDGE OVER  
SANTA FE RR AND  
CROW CREEK  
S.B.I. RT. 89-SEC. 125-1  
MARSHALL COUNTY