

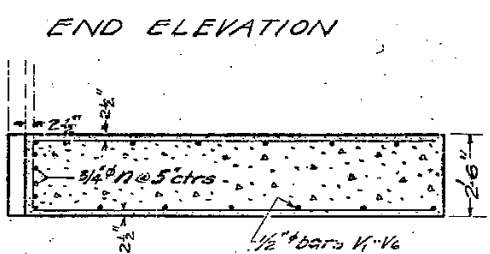
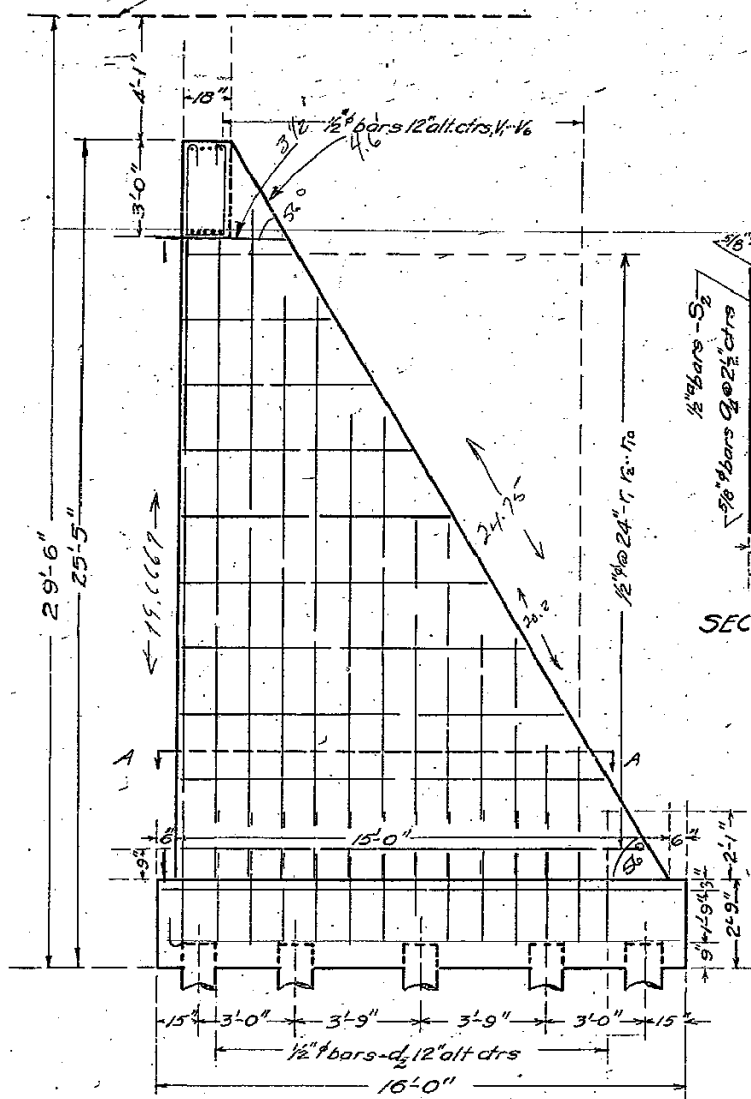
BM#44 S&W in root 24" Willow  
75' Lt. Sta. 298+75 El. 380.68

STATE OF ILLINOIS  
DEPARTMENT OF PUBLIC WORKS & BUILDINGS  
DIVISION OF HIGHWAYS

ROAD DISTRICT	SECTION	COUNTY	TOTAL SHEETS	SHEET NO.
89	125V-B	Marshall	14	13

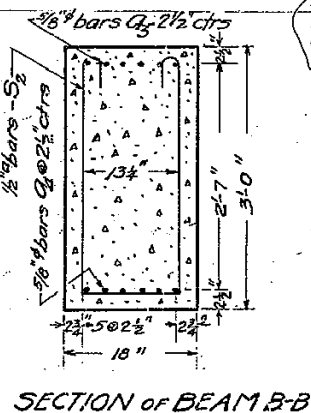
SHEET NO. 10  
15 SHEETS

Crown Finished Roadway 405.30

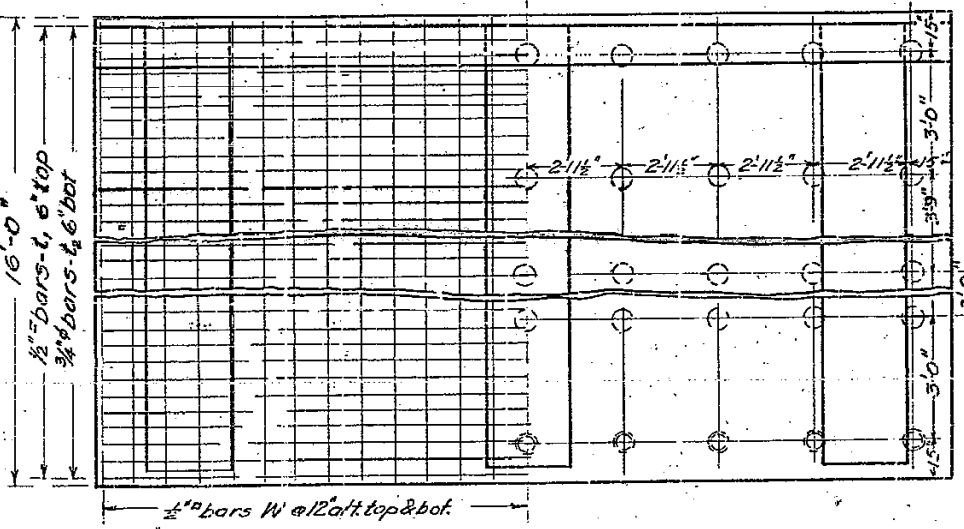
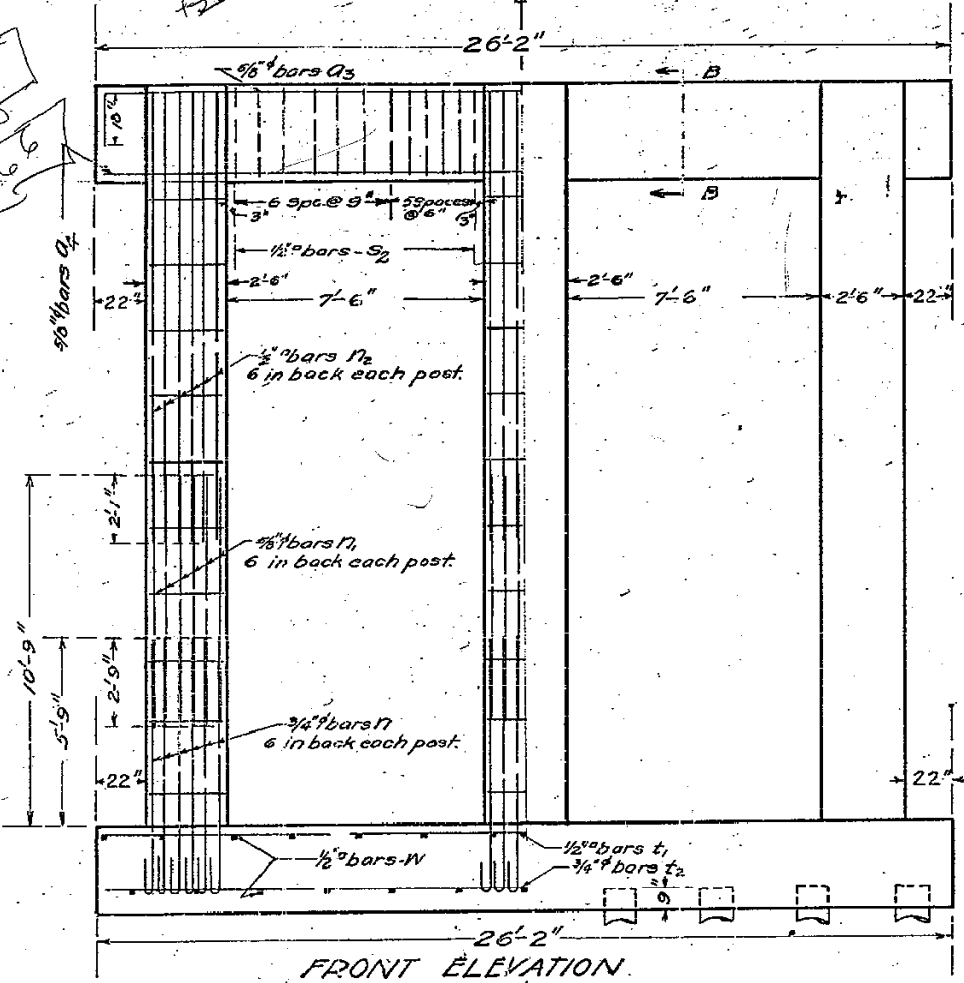


$\frac{1}{2}(15+22.7) = 341$   
 $\frac{1}{2}(3+3.5) = 335.75$   
 $6(3.5) = 216$   
 $2316$   
 $150$   
 $2466$

$3(2'-6" \times 17.7) = 1948$   
 $+ 3(2'-6" \times 20.2) = 152$   
 $300$   
 $(4'-9.78" \times 37.5) = 150$



$\frac{22.7}{15} = \tan \theta = .15$   
 $38^\circ$   
 $\theta = \tan^{-1} .15$   
 $\theta = 56.3$



BILL OF MATERIAL  
SOUTH ABUTMENT.

Bars No	Size	Length
A3	6	28'-9"
A4	6	25'-9"
A7	18	9'-9"
A7	18	7'-9"
A7	18	15'-6"
A2	39	4'-0"
V1	6	4'-3"
V2	6	7'-9"
V3	6	11'-0"
V4	6	14'-0"
V5	6	18'-0"
V6	6	21'-0"
W	3	30'-3"
W	3	27'-9"
W	3	25'-9"
W	3	23'-0"
W	3	20'-0"
W	3	18'-3"
W	3	16'-0"
W	3	13'-0"
W	3	11'-6"
W	3	8'-6"
S2	24	9'-3"
T1	32	25'-9"
T2	32	25'-9"
W	26	15'-9"

Reinforcing Steel - lbs. 4260  
 Concrete, Class X 977  
 Untreated Piles, 20' long, # 900

Note: Class X Concrete shall be used throughout.  
All reinforcing steel shall be wired securely in place before concrete is poured.  
15 Ton, untreated piles, 12" butt, 8" tip, 20' long, 36 req'd.  
17 Ton, untreated piles, 12" butt, 8" tip, 20' long, 9 req'd.

COMPUTED - C. E. Morgan  
 CHECKED - J. H. Davis  
 DRAWN - C. E. Morgan  
 EXAMINED - J. J. Buehler  
 PASSED - J. J. Buehler  
 APPROVED - J. J. Buehler  
 DATE - JULY 24, 2013