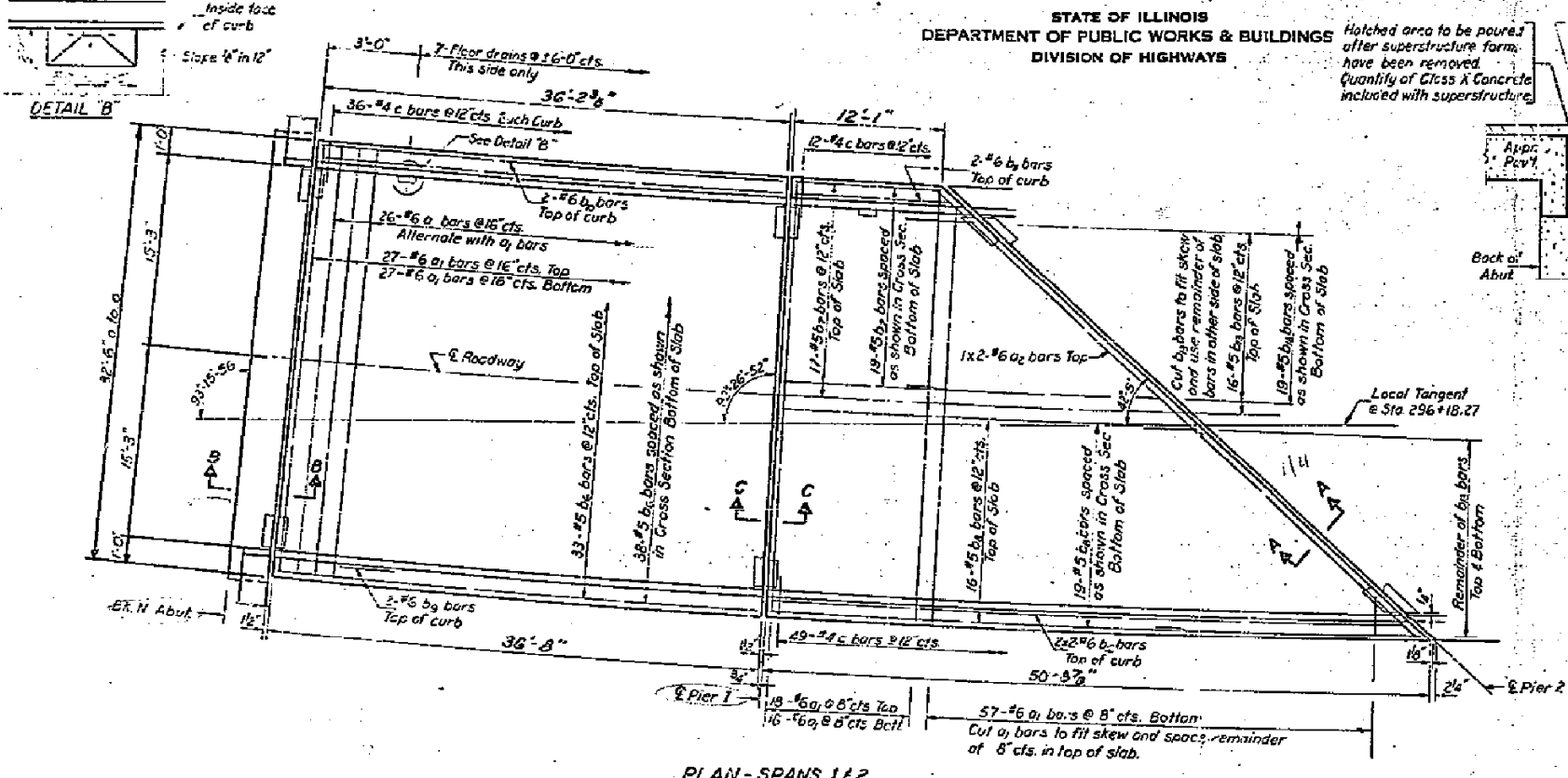
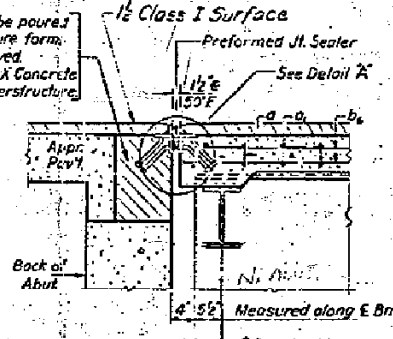


STATE OF ILLINOIS  
DEPARTMENT OF PUBLIC WORKS & BUILDINGS  
DIVISION OF HIGHWAYS

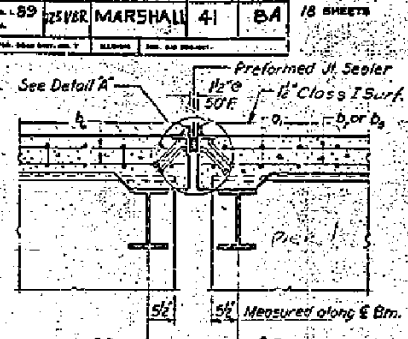
SHEET NO. 2 A			
89	25VBR	MARSHALL	41 BA
			18 SHEETS



Hatched area to be poured after superstructure form have been removed. Quantity of Class X Concrete included with superstructure.

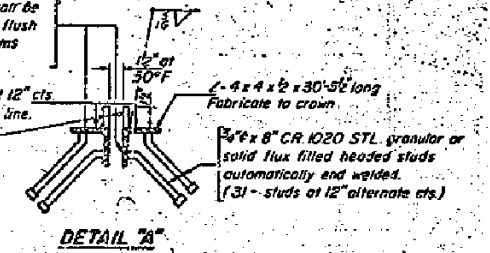


SECTION B-B

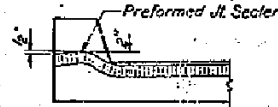


SECTION C-C

\* 7/8" holes at 12" cts for 3/4" bolts set on 2" gage line. All bolts shall be burned, sawed or clipped off flush with back of angles after forms are removed.

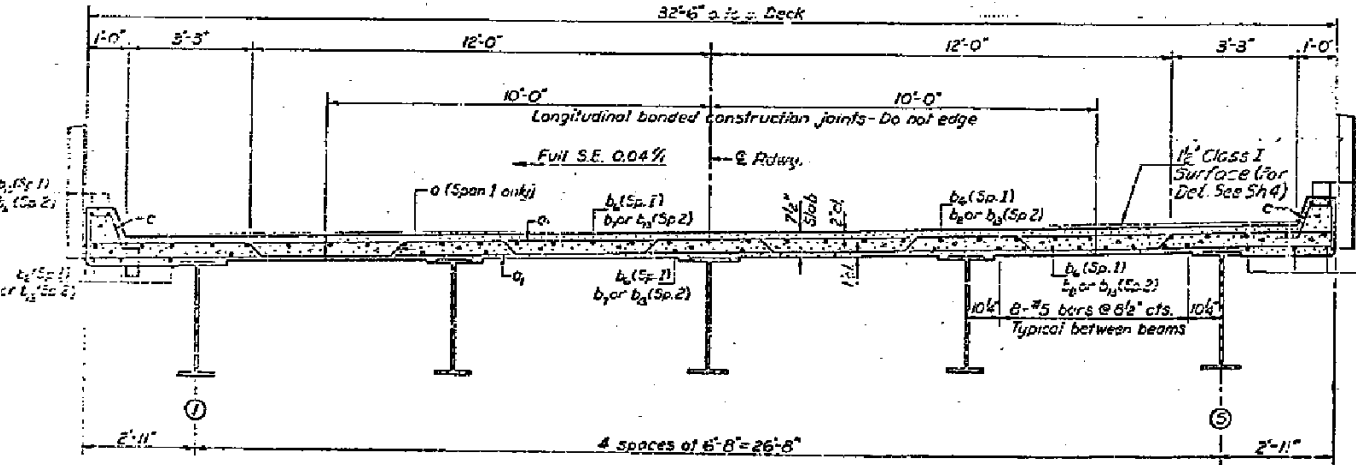


DETAIL 7a



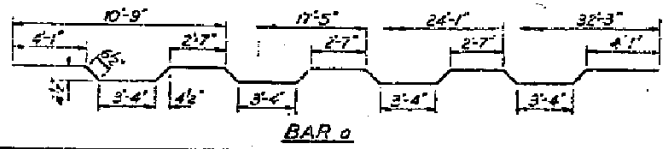
TYPICAL END OF SEALER TREATMENT

NOTE: See Sheet #3 for Section A-A

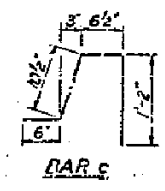


CROSS SECTION

Note: All horizontal dimensions are radial.

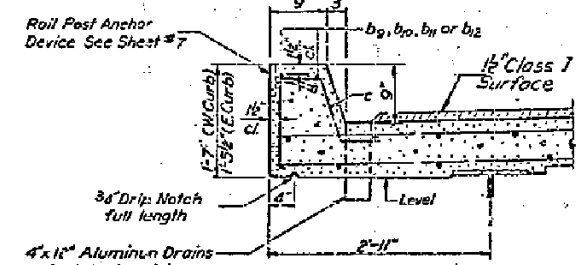


BAR a



BAR c

\* NOTE: The 4x4x2 angle with 7/8" bolt holes in the vertical leg shall be placed on the span where the concrete slab is to be poured first.



CURB SECTION

Slope Cl. I Surf. for drainage @ drain locations only.

Aluminum Sheets: Welded ASTM: B209 alloy 6061-T6 or Aluminum Extrusions ASTM: B221 alloy 6061-T6

FLOOR DRAIN

Cost as noted to Class X Concrete

BILL OF MATERIAL				
Bar	No.	Size	Length	Shape
a	26	#6	33'-7"	~
a1	147	#6	32'-3"	~
a2	2	#6	26'-9"	~
b6	71	#5	35'-6"	~
b7	36	#5	11'-3"	~
b8	35	#5	30'-9"	~
b9	2	#6	36'-0"	~
b10	2	#6	35'-6"	~
b11	2	#6	11'-3"	~
b12	4	#6	25'-9"	~
b13	35	#5	22'-0"	~
c	133	#4	3'-1"	J
Class X Concrete			Cu Yrds	587
Reinforcement Bars			Lbs	14170

AS REV. G-1-71 W.H.  
SPANS 1 & 2  
SUPERSTRUCTURE  
S.B.I. 89 SEC. 125 VBR  
MARSHALL COUNTY  
STA. 295 + 98.76

DESIGNED	EXAMINED
CHECKED	PASSED
DRAWN	APPROVED
CHECKED	