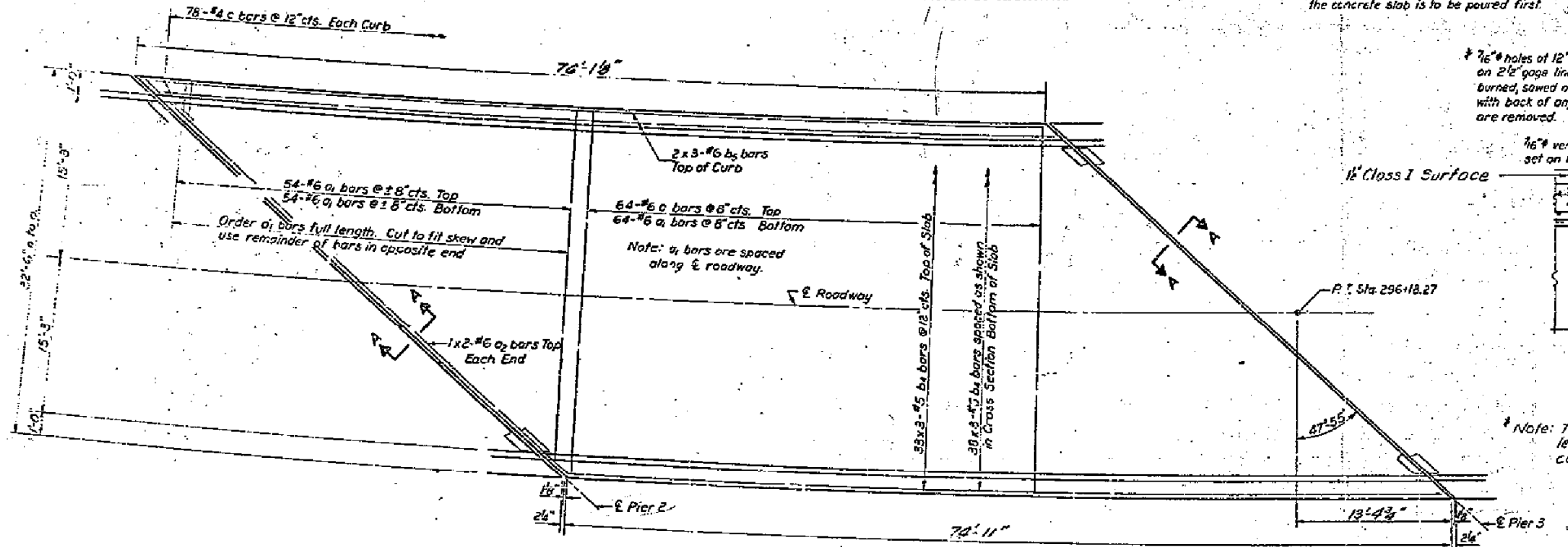


STATE OF ILLINOIS
DEPARTMENT OF PUBLIC WORKS & BUILDINGS
DIVISION OF HIGHWAYS

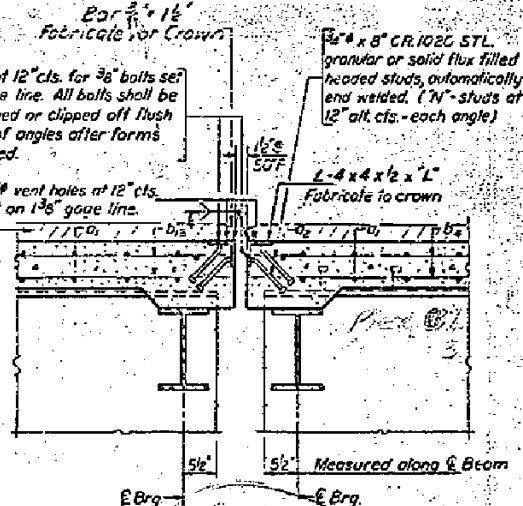
PROJECT NO.	SECTION	SHEET NO.	TOTAL SHEETS
25768	MARSHALL 41	9A	16 SHEETS

NOTE: The 4x4x1/2 angle with 1/2" bolt holes in the vertical leg shall be placed on the span where the concrete slab is to be poured first.

NOTE: Size indicated thus 20x3-#8 etc. indicates 20 lines of bars with 3 lengths per line. Min. surface = 14 dia



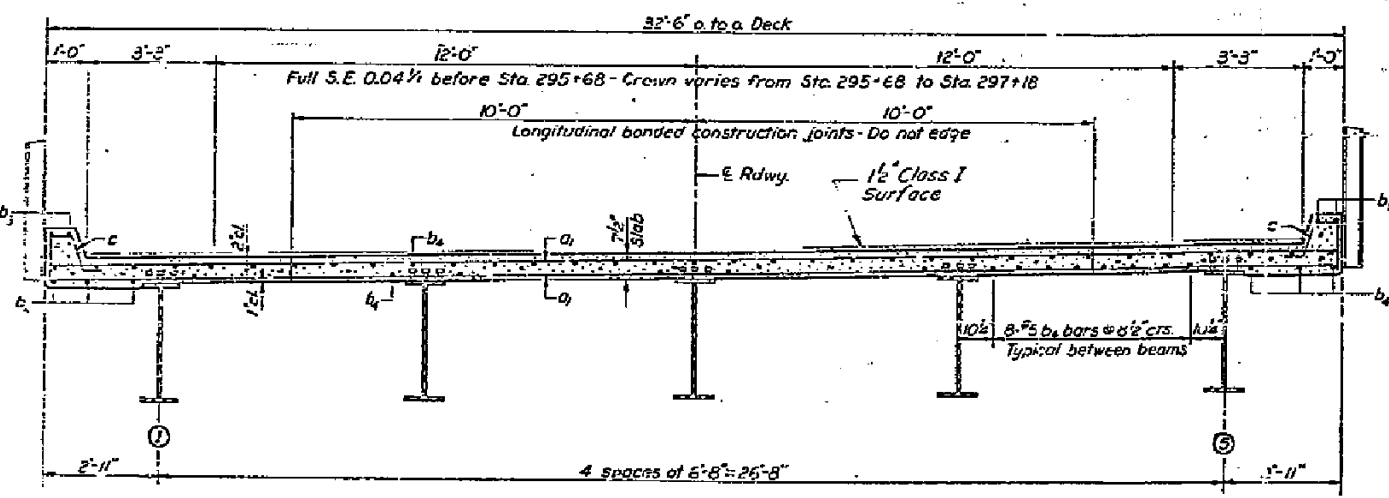
PLAN - SPAN 3



SECTION A-A

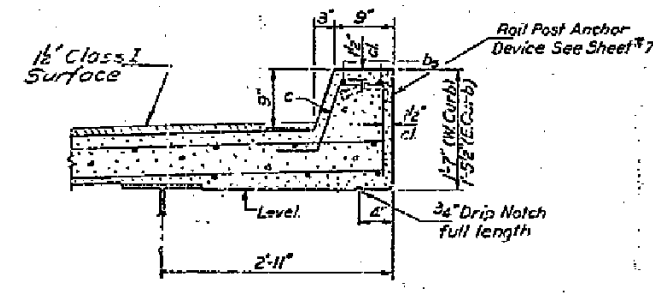
Note: The 4x4x1/2 angle with 1/2" bolt holes in the vertical leg shall be placed on the span where the concrete slab is to be poured first.

	VALUE OF "I" IN	
	"C"	"N"
Pier 2	48'-10 1/4"	49
Pier 3	45'-6 1/4"	46
Pier 4	30'-5 1/2"	31
Pier 8	30'-5 1/2"	31
So. Abut.	30'-5 1/2"	31



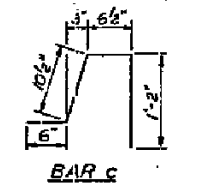
CROSS SECTION

Note: All horizontal dimensions are radial



CURB SECTION

BILL OF MATERIAL				
Bar	No.	Size	Length	Shape
a	296	#6	32'-3"	
a	4	#6	26'-9"	
b	213	#5	26'-3"	
b	12	#6	26'-6"	
c	156	#4	3'-1"	
Class I Concrete			Cu Yds.	66.1
Reinforcement Bars			Lbs.	16280



BAR C

AS REV. 6-1-71 W/H
SPAN 3
SUPERSTRUCTURE
S.B. RT. 89 SEC. 125 VBR
MARSHALL COUNTY
STA. 295+98.76

DESIGNED	John H. ...	EXAMINED	June 3 1970
DRAWN	J.L. ...	PASSED	
CHECKED	L.F.	APPROVED	