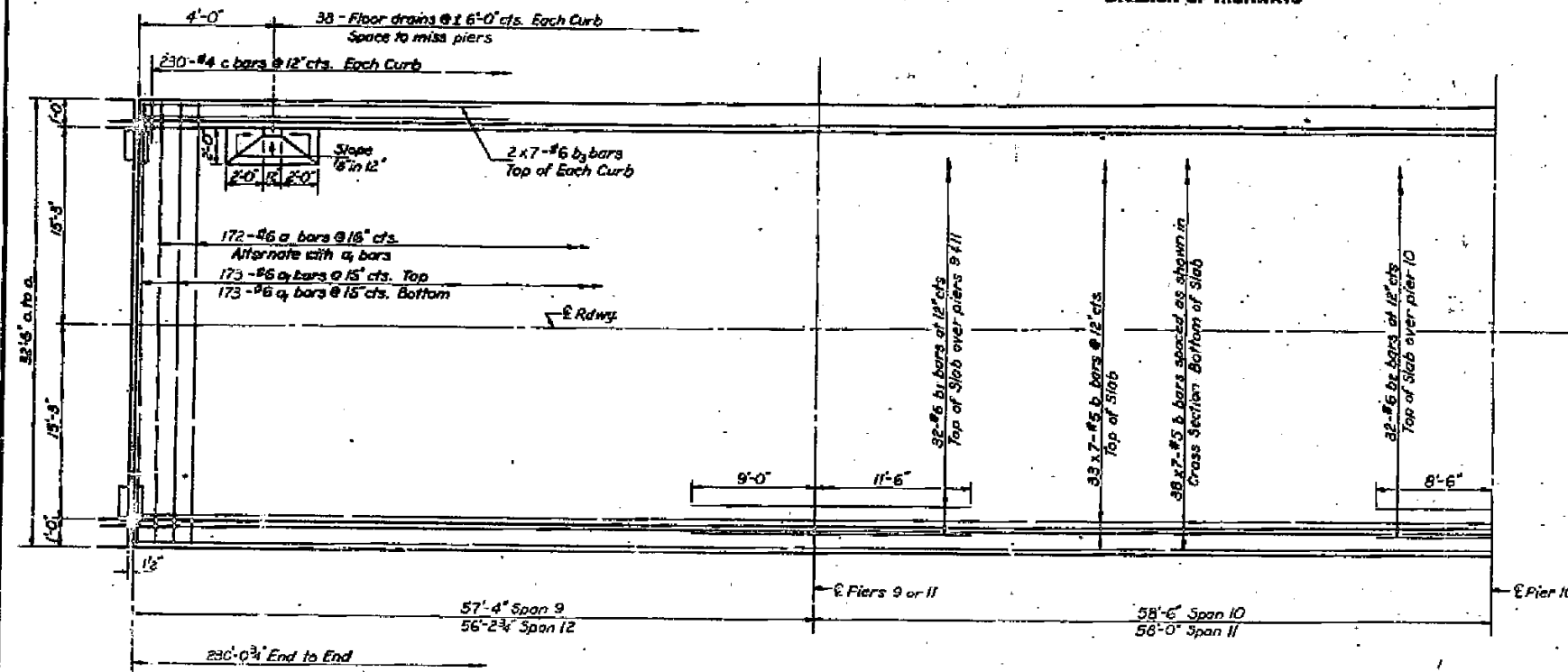


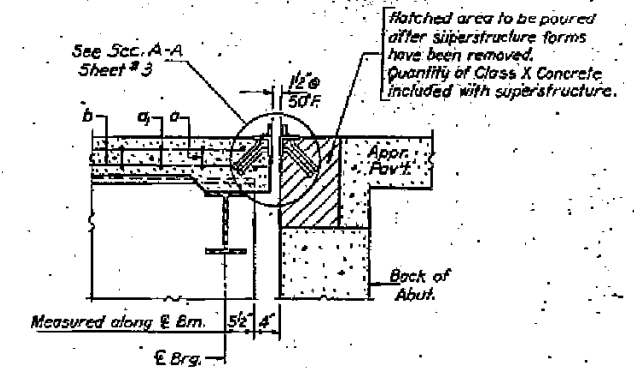
Note: Bars indicated thus 20 x 3-#5 etc. indicates 20 lines of bars with 3 lengths per line. Min. bar laps = 24 dia.

STATE OF ILLINOIS
DEPARTMENT OF PUBLIC WORKS & BUILDINGS
DIVISION OF HIGHWAYS

PROJECT NO.	125VBR	COUNTY	MARSHALL	SHEET NO.	41	OF	12
18 SHEETS							

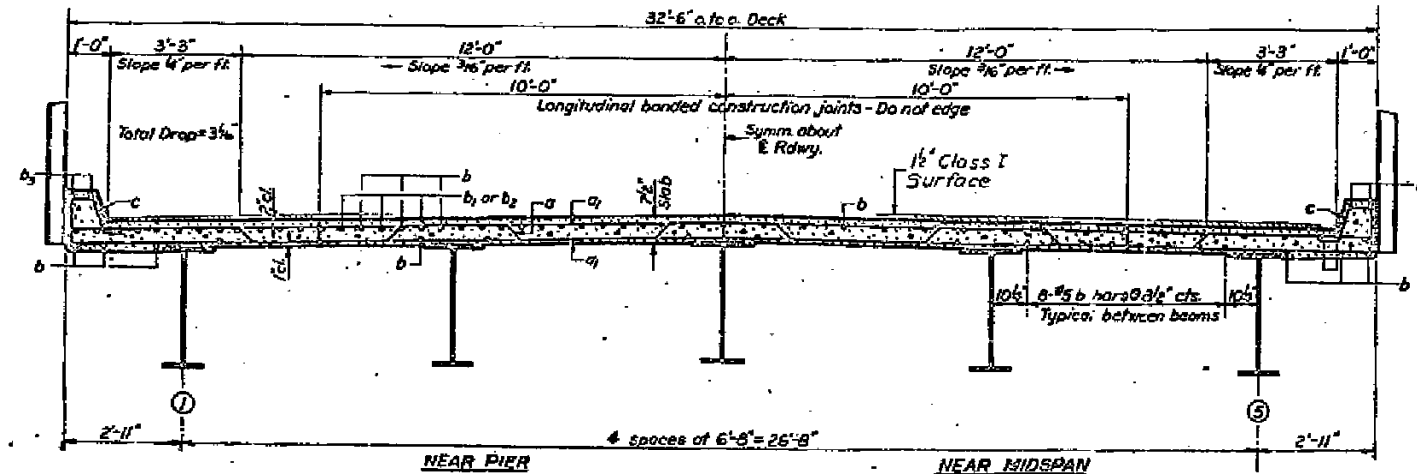


HALF PLAN - SPANS 9 THRU 12

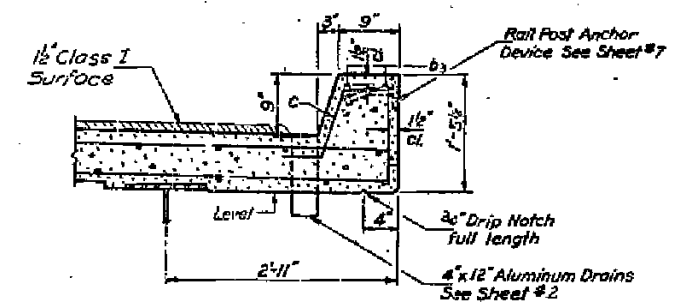


SECTION AT SOUTH ABUT.

NOTE: See sheet #5 for Section of Pier 8.



CROSS SECTION

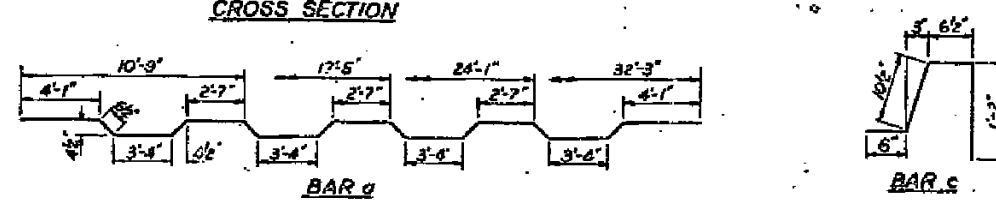


CURB SECTION

Slope Class I Surf. for drainage @ drain locations only.

BILL OF MATERIAL				
Bar	No.	Size	Length	Weight
a	172	#5	33'-7"	
av	346	#5	32'-3"	
b	497	#5	34'-3"	
b1	64	#6	20'-6"	
b2	32	#6	17'-0"	
ba	28	#6	34'-6"	
c	460	#4	3'-7"	J1
Class X Concrete			Cu Yds	193.6
Reinforcement Bars			Lbs.	40,370

DESIGNED	W.H. Hoop	DATE	JULY 3 1970
DRAWN	Allyn Coates	CHECKED	J.L. Armstrong
APPROVED	J.L. Armstrong	DATE	JULY 24, 2013



SPANS 9 THRU 12
SUPERSTRUCTURE
S.A.I. RT. 69 SEC. 125 VBR
MARSHALL COUNTY
STA. 295 + 93.75