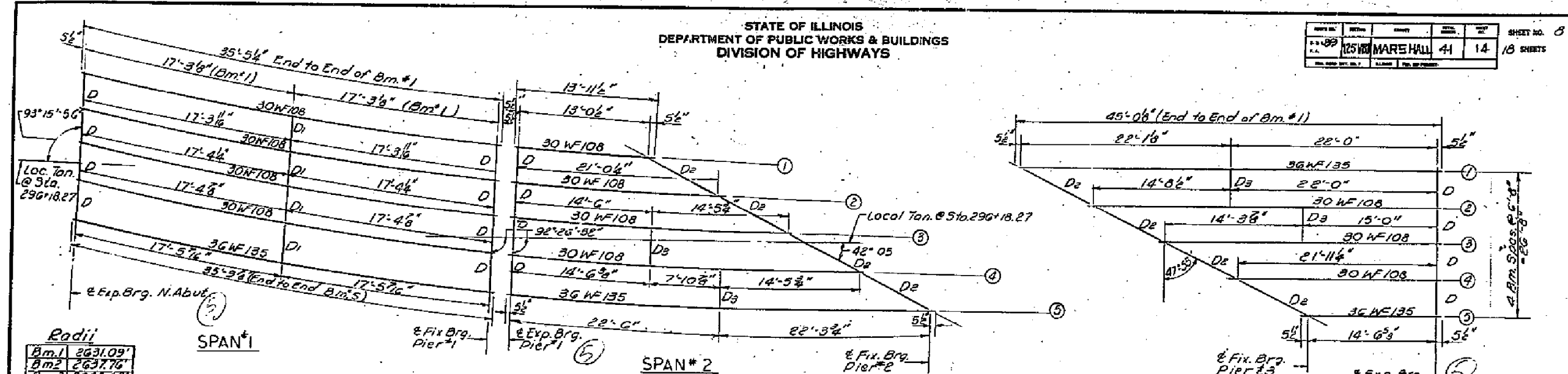


STATE OF ILLINOIS
DEPARTMENT OF PUBLIC WORKS & BUILDINGS
DIVISION OF HIGHWAYS

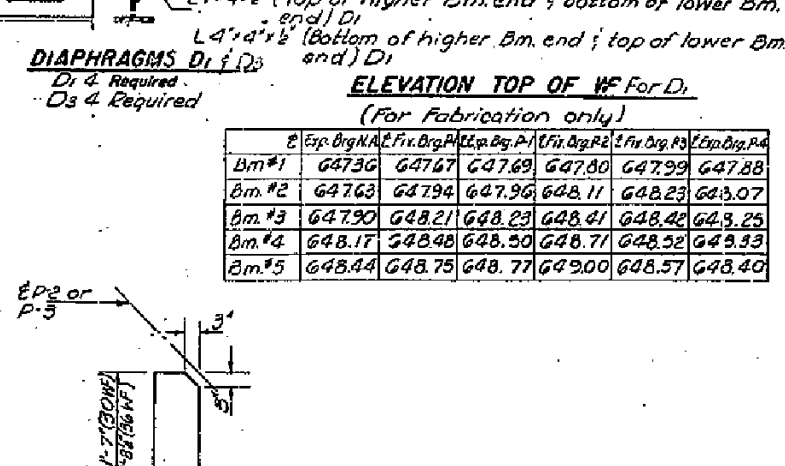
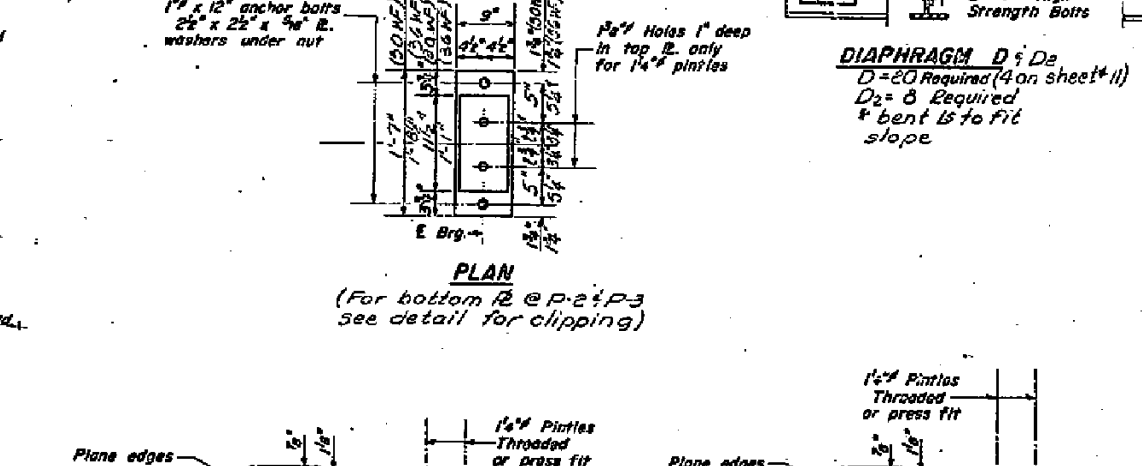
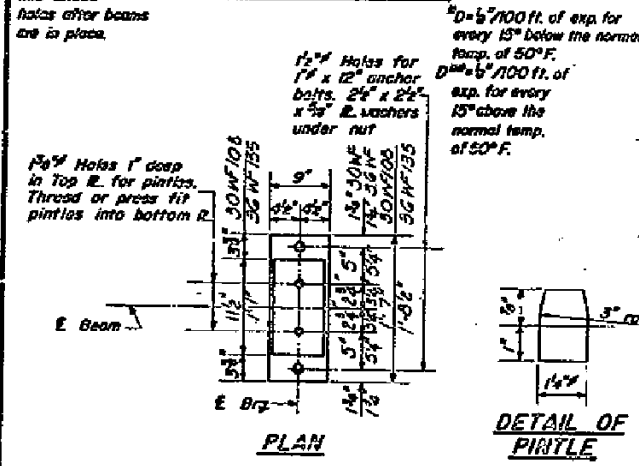
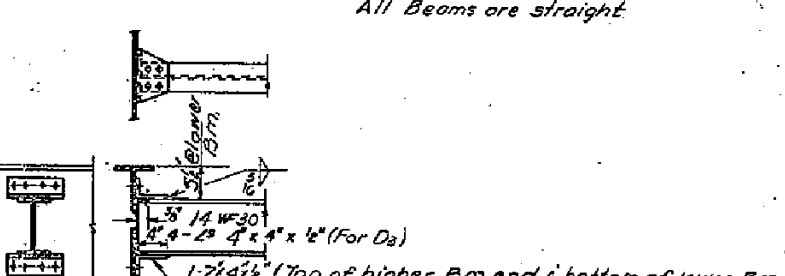
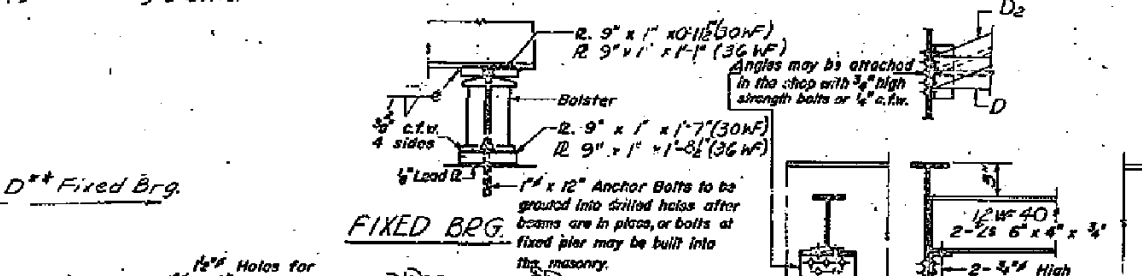
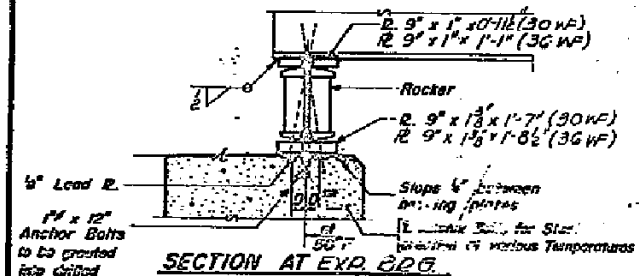
PROJECT NO.	SECTION	COUNTY	TOTAL SHEETS	SHEET NO.
125VBR	MARSHALL	41	14	18



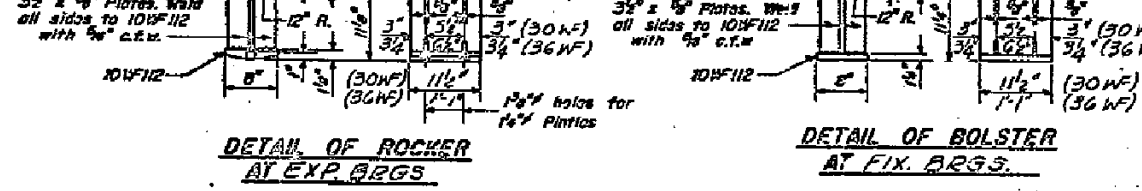
Radii

Bm.1	2631.09'
Bm.2	2637.76'
Bm.3	2644.42'
Bm.4	2651.08'
Bm.5	2657.75'

Notes: (For Spans 1 & 2 only)
All Bms. are spaced @ 6'-8" cts. along radial lines. Horiz. dimensions are given along E Bms.



DESIGNED BY: Lynn Trasco
DRAWN BY: Lynn Trasco
CHECKED BY: F. Mercado
DATE: June 3 2010



SPANS 1, 2 & 4
STRUCTURAL STEEL
S.B.I. RT. 89 SEC. 125 V.B.R.
MARSHALL COUNTY
STA. 295+98.75