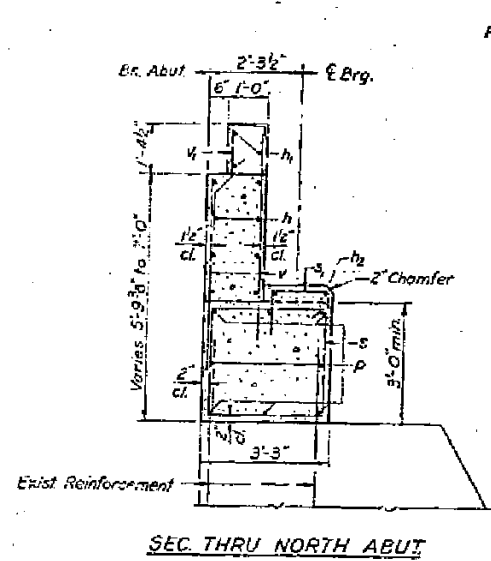
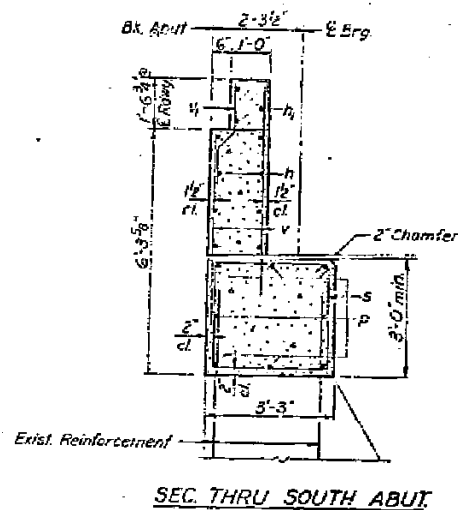


STATE OF ILLINOIS
DEPARTMENT OF PUBLIC WORKS & BUILDINGS
DIVISION OF HIGHWAYS

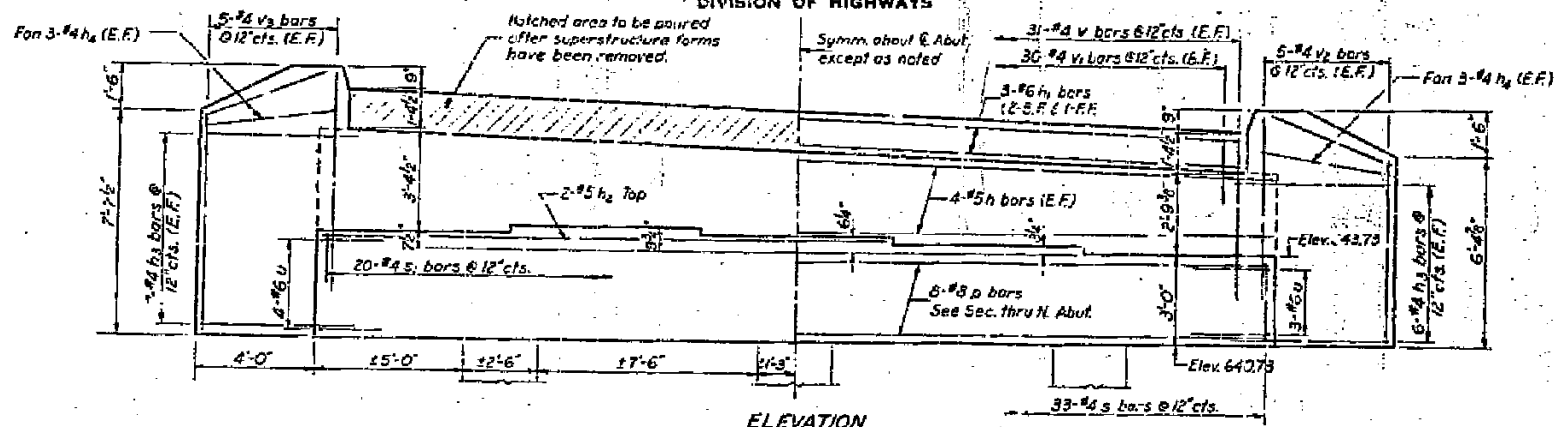
PROJECT NO.	SECTION	SHEET NO.	TOTAL SHEETS
125VBR	MARSHALL 41	18A	18



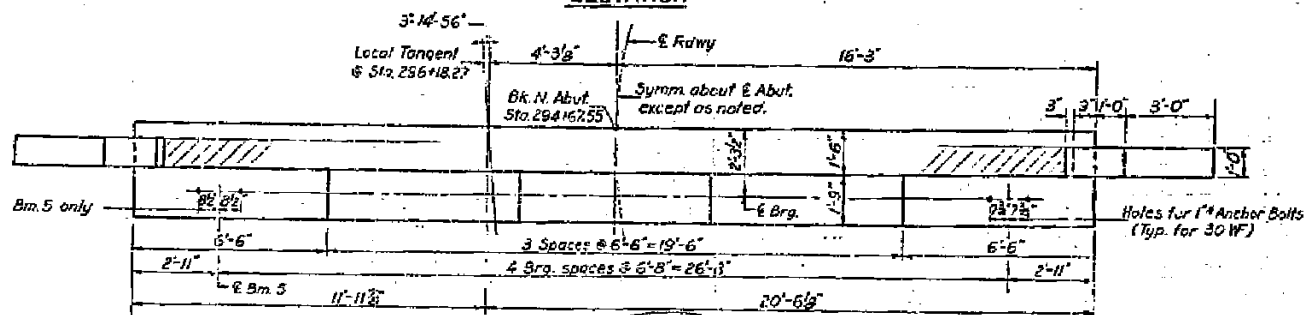
SEC THRU NORTH ABUT



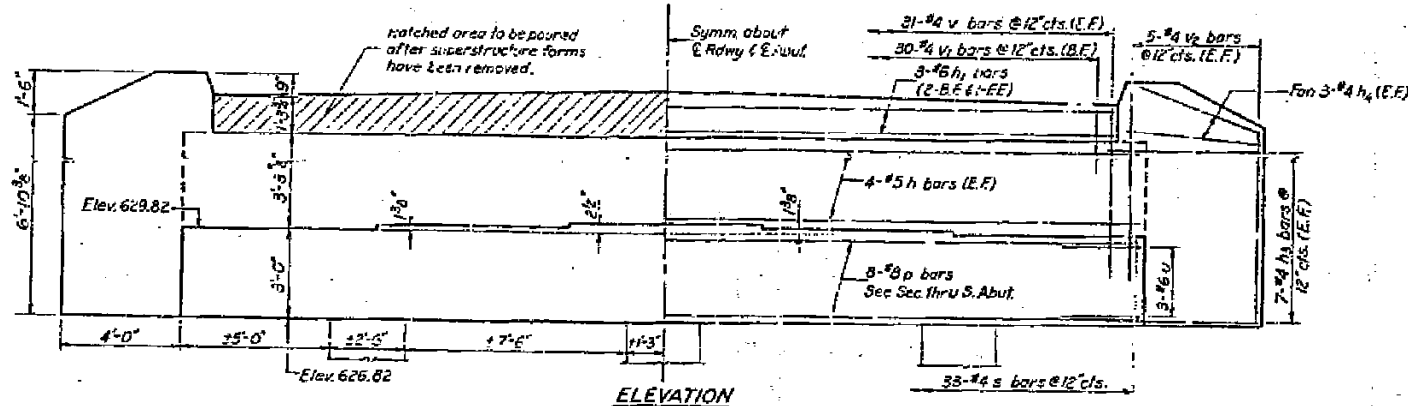
SEC THRU SOUTH ABUT



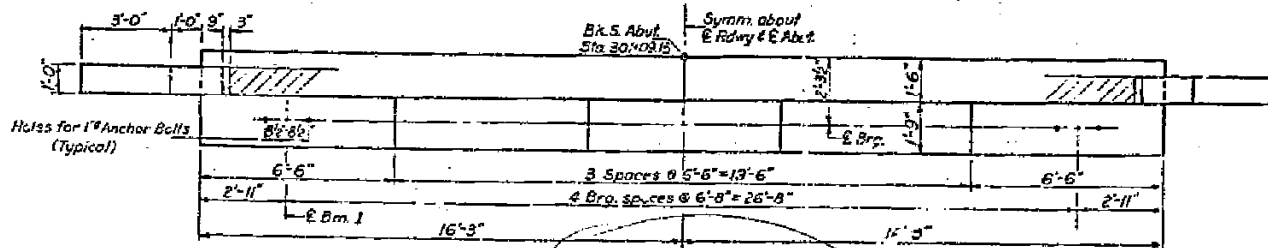
ELEVATION



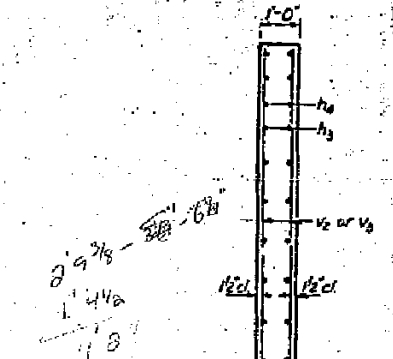
PLAN - NORTH ABUT.



ELEVATION



PLAN - SOUTH ABUT.

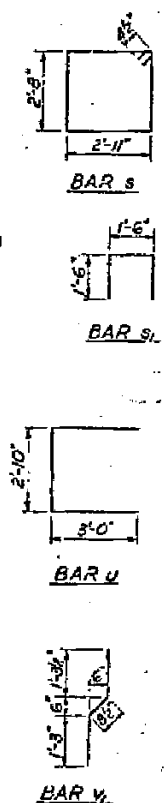


SEC THRU WING WALL
(Bend v_2 or v_3 bars in field to fit section if necessary.)

Remove the existing concrete from top of Abut. to the bottom of new cap. The existing vertical reinforcement which will be embedded in new concrete shall be cleaned and cut off 2'-6" above bottom of new cap. The other vertical reinforcement shall be cut off flush with bottom of new cap and covered with cement mortar.

TWO ABUTS.
BILL OF MATERIAL

Bar	No.	Size	Length	Shape
h	16	#4	32'-3"	—
h_1	6	#6	3'-3"	—
h_2	2	#5	19'-3"	—
h_3	54	#4	5'-3"	—
h_4	24	#4	4'-6"	—
p	16	#8	32'-3"	—
s	66	#4	4'-11"	□
s_1	20	#4	4'-6"	□
v	13	#6	8'-10"	—
v_1	124	#4	5'-6"	—
v_2	60	#4	3'-3"	—
v_3	30	#4	7'-6"	—
v_4	10	#4	6'-9"	—
Class X Concrete				Cu.Yds 417
Reinforcement Bars				Lbs. 3850
Concrete Remove!				Cu.Yds 17



DESIGNED	W. H. Hays	EXAMINED	June 3 1970
CHECKED	L. J. Armstrong	PASSED	
DRAWN	J. L. Armstrong	APPROVED	
CHECKED	L. F. ...		

AS REV. 6-1-71 WH
ABUTMENTS
S.B.I. RT. 89 SEC. 125 VBR
MARSHALL COUNTY
STA. 295 + 98.76