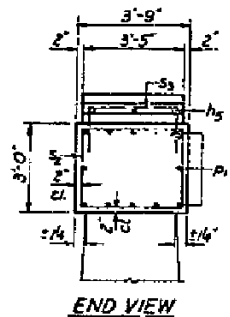
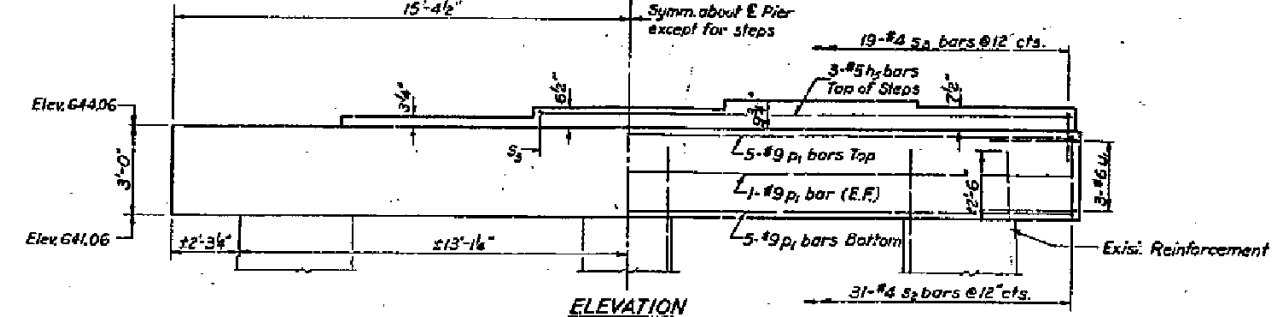


STATE OF ILLINOIS
DEPARTMENT OF PUBLIC WORKS & BUILDINGS
DIVISION OF HIGHWAYS

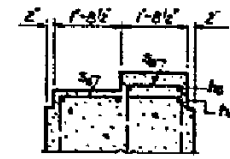
Sheet No.	69	Project No.	125VBR	Section	41	Station	19
SHEET NO. 19							



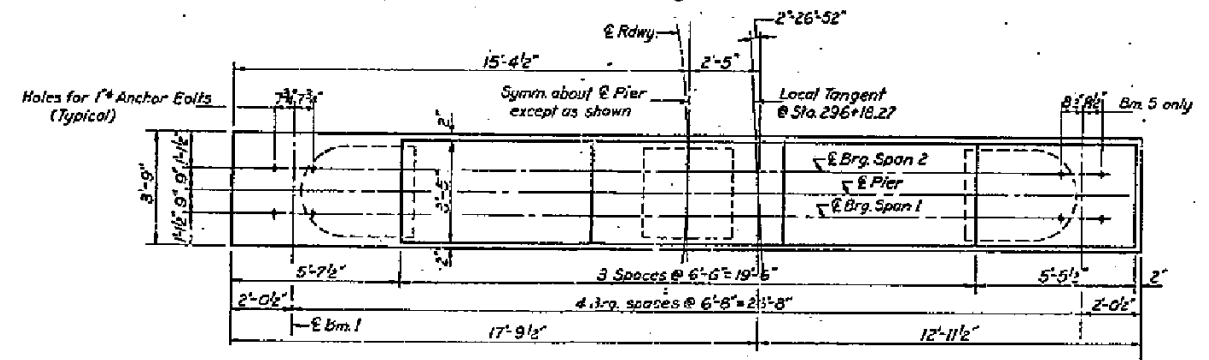
END VIEW



ELEVATION
Looking South



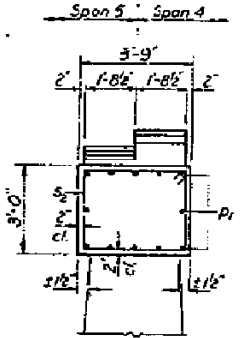
SECTION A-A



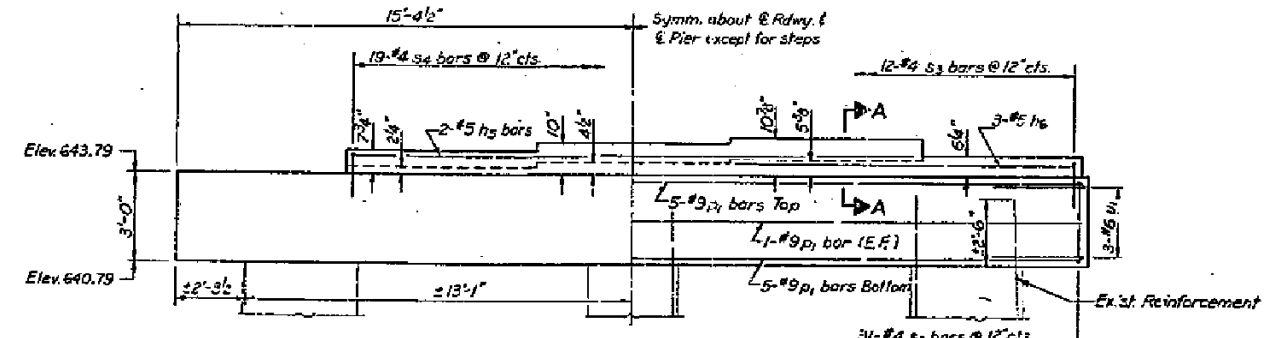
PLAN - PIER 1

NOTE: Remove existing concrete from top of pier to bottom of new cap. Existing vertical reinforcement in columns shall be cleaned and cut off ± 2'-6" above bottom of new cap. The horizontal tie bars shall be cleaned and left in place.

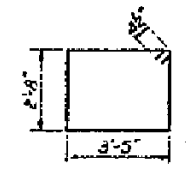
30-9



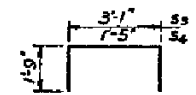
END VIEW



ELEVATION
Looking South



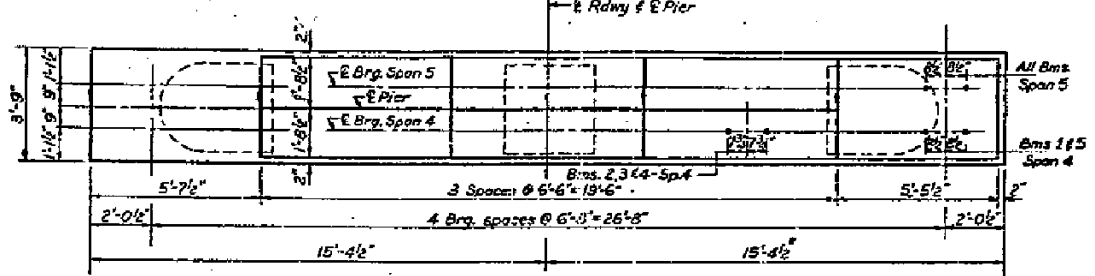
BAR S2



BAR S3 & S4



BAR V1



PLAN - PIER 4

TWO PIERS
BILL OF MATERIAL

Bar	No.	Size	Length	Qty
h3	5	#5	18'-3"	1
h6	3	#6	11'-9"	1
Di	24	#4	30'-6"	1
S2	62	#4	12'-11"	1
S3	31	#4	6'-7"	1
S4	19	#4	6'-11"	1
V1	12	#4	9'-4"	1
Class # Concrete		Cu Yds	21.2	
Reinforcement Bars		Lbs	3540	
Concrete Removal		Cu Yds	3.7	

PIERS 1 & 4
SBI RT 69 SEC. 125 VCR
MARSHALL COUNTY
STA. 295 + 98.76

DESIGNED: *Wai Hing*
CHECKED: *Lynn Traces*
DRAWN: *J.L. Armstrong*
CHECKED: *A.F.*

EXAMINED: *June 3 1976*
PASSED:
APPROVED: