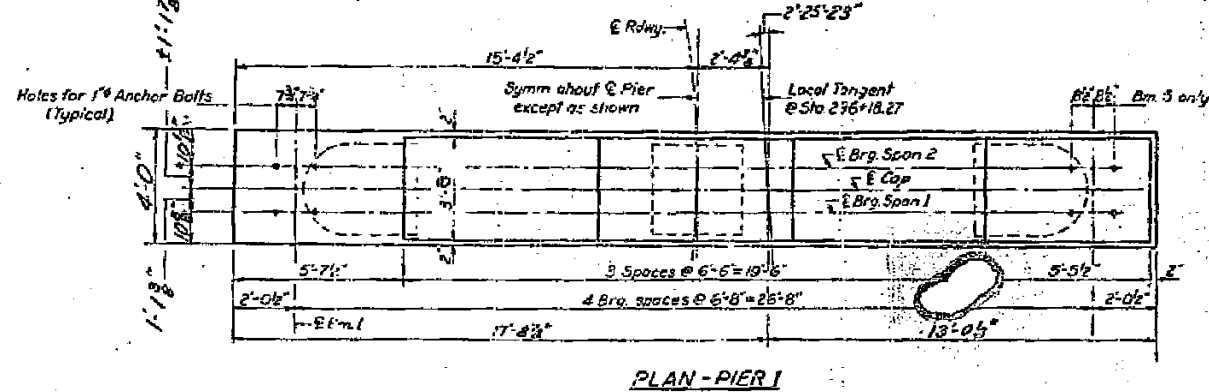
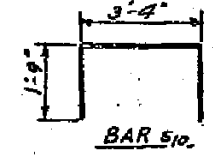
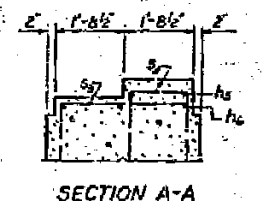
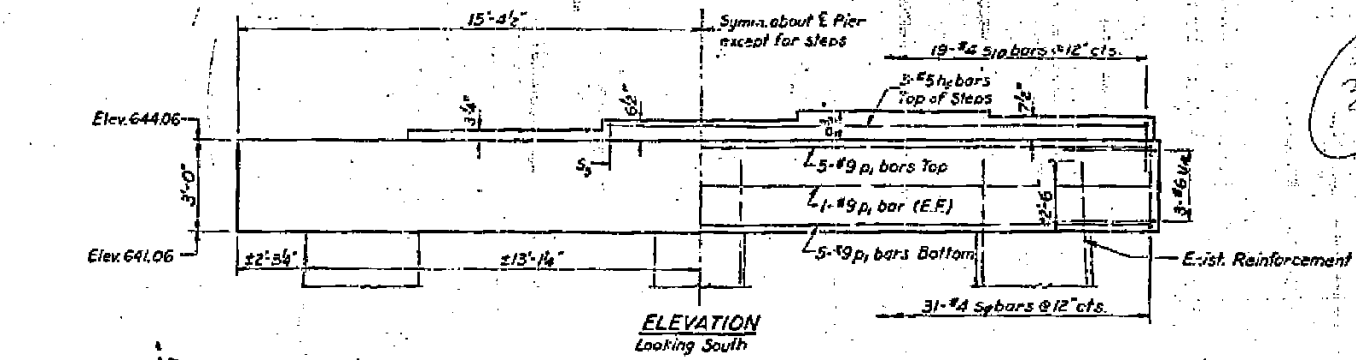
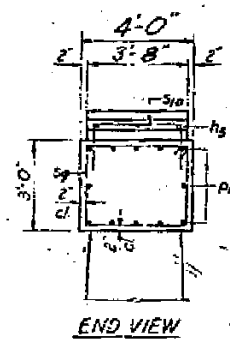
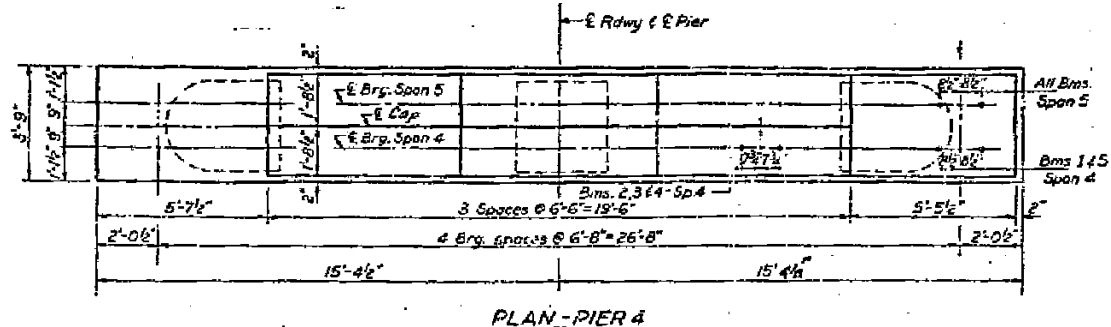
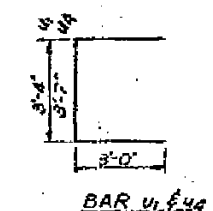
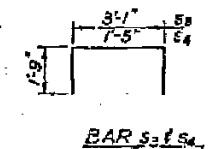
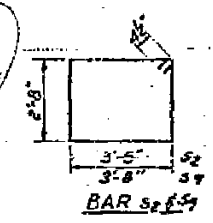
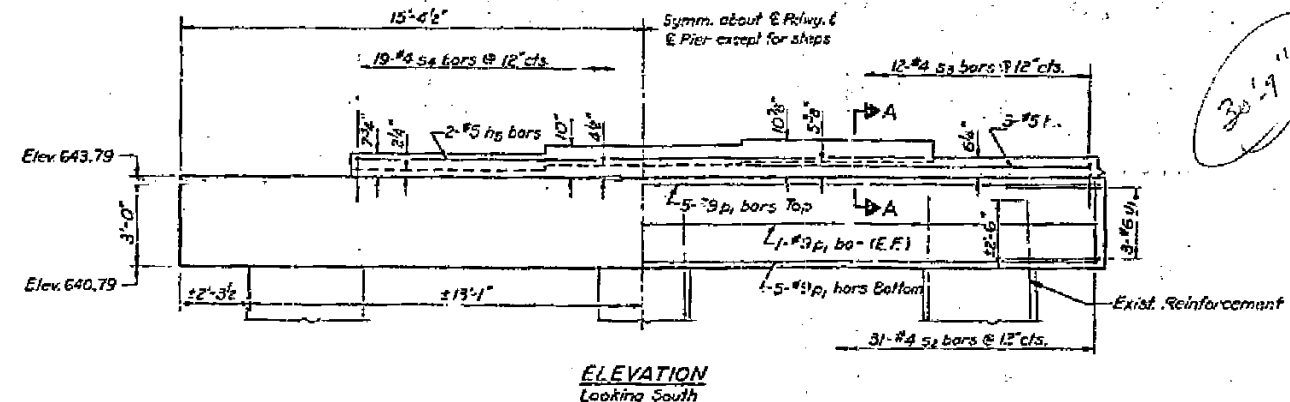
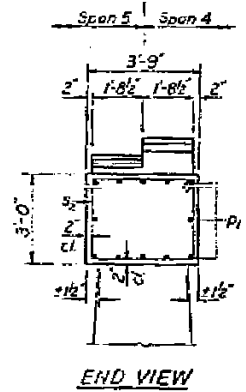


STATE OF ILLINOIS  
DEPARTMENT OF PUBLIC WORKS & BUILDINGS  
DIVISION OF HIGHWAYS

PROJECT NO.	SECTION	COUNTY	TOTAL SHEETS	SHEET NO.
125VBR	MARSHALL	41	134	10



NOTE:  
Remove existing concrete from top of pier to bottom of new cap. Existing vertical reinforcement in columns shall be cleaned and cut off 2'-6" above bottom of new cap. The horizontal tie bars shall be cleaned and left in place.



TWO PIERS  
BILL OF MATERIAL

Bar	No.	Size	Length	Shape
hs	5	#5	18'-2"	—
hb	3	#5	11'-9"	—
D1	24	#9	30'-6"	—
S2	31	#4	12'-11"	□
S3	12	#4	6'-7"	□
S4	19	#4	4'-11"	□
S4	31	#4	13'-5"	□
S10	19	#4	6'-10"	□
u1	6	#6	9'-4"	□
u4	6	#6	9'-7"	□
Class X Concrete		Cu.Yds.	29.2	
Reinforcement Bars		Lbs.	3520	
Concrete Removal		Cu.Yds.	34	

DESIGNED *W. H. Harty*  
CHECKED *W. H. Harty*  
DRAWN *J. L. Armstrong*  
CHECKED *J. F.*

EXAMINED *[Signature]*  
PASSED  
APPROVED

JUNE 3 1970

AS REV. 6-1-71 W.H.  
PIERS 1 & 4  
S.B.I. RT. 49 SEC. 125 VBR  
MARSHALL COUNTY  
STA. 295 + 98.76