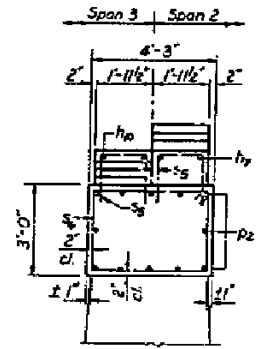
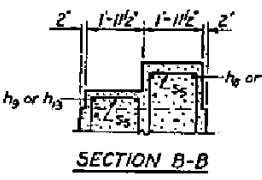


STATE OF ILLINOIS
DEPARTMENT OF PUBLIC WORKS & BUILDINGS
DIVISION OF HIGHWAYS

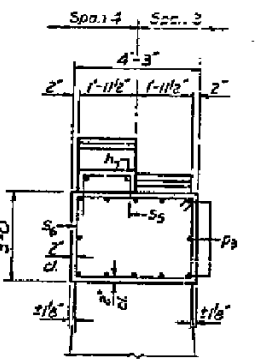
Project No.	68580	Sheet No.	41	Total Sheets	120
Contract No.	125VBR	Stationing	295+98.75	Scale	AS SHOWN



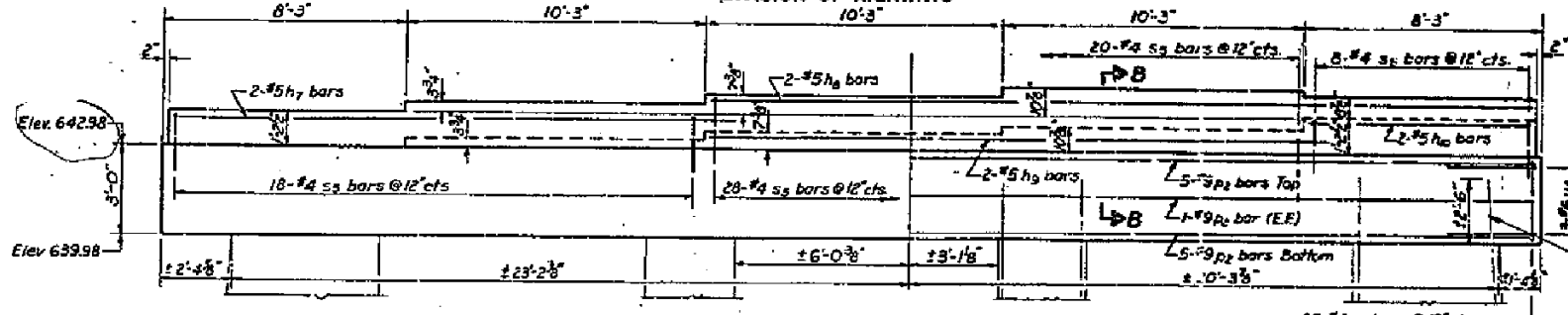
END VIEW



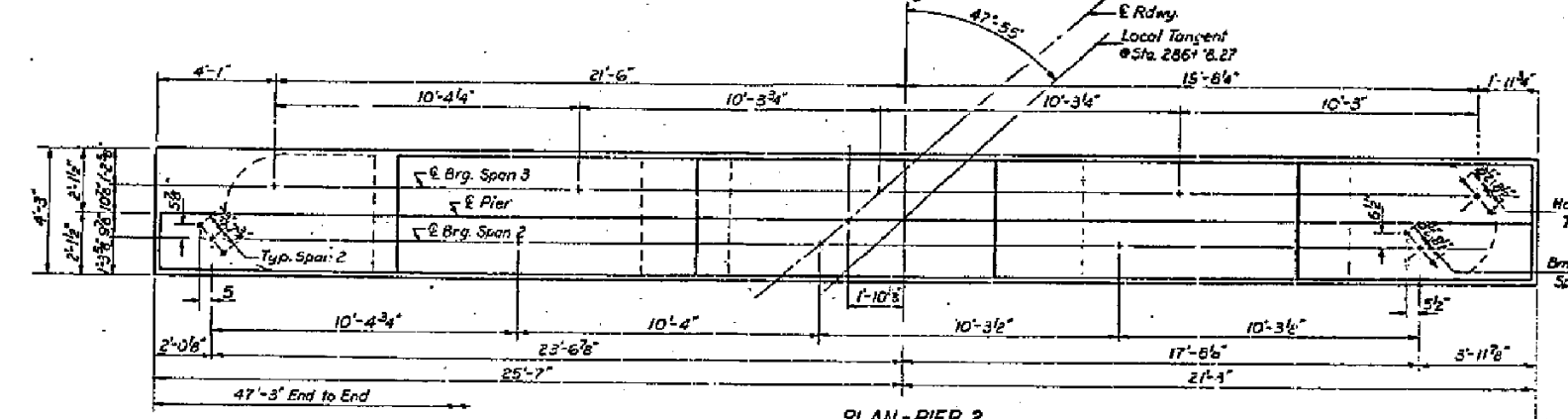
SECTION B-B



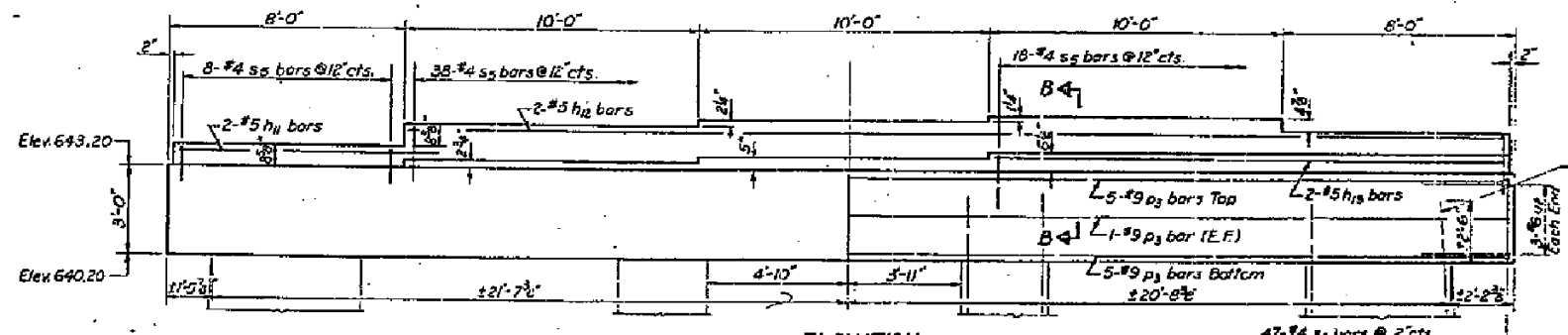
END VIEW



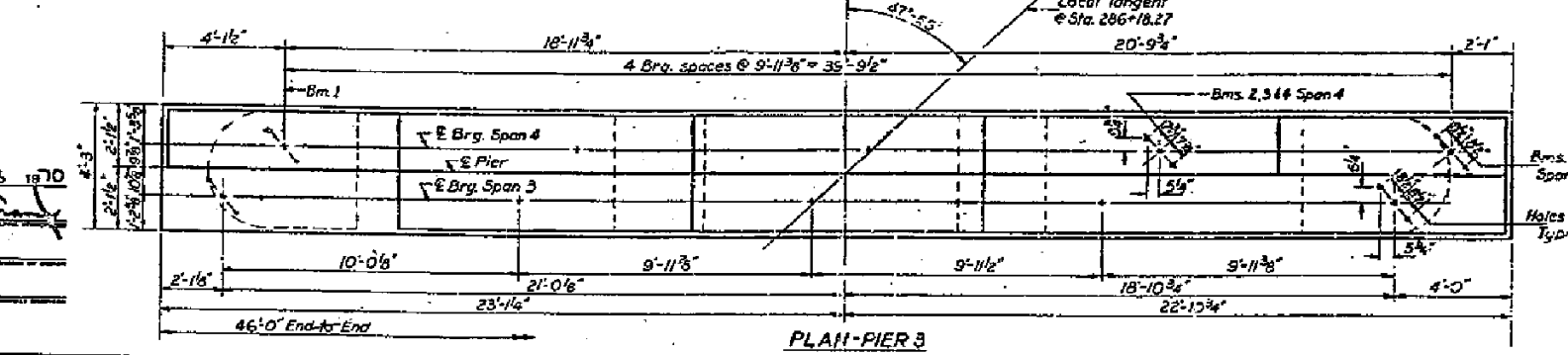
ELEVATION Looking South



PLAN-PIER 2

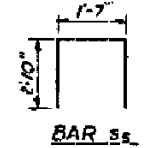


ELEVATION Looking South

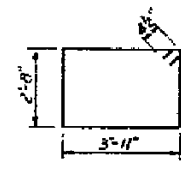


PLAN-PIER 3

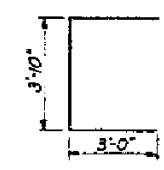
NOTE: Remove existing concrete from top of pier to bottom of new cap. Existing vertical reinforcement in columns shall be cleaned and cut off ± 2'-6" above bottom of new cap. The horizontal tie bars shall be cleaned and left in place.



BAR Ss



BAR S6



BAR U6

TWO PIERS
BILL OF MATERIAL

Bar	No.	Size	Length	Shape
h1	2	#5	18'-6"	—
h2	2	#5	26'-3"	—
h3	2	#5	21'-3"	—
h4	2	#5	7'-9"	—
h5	2	#5	9'-0"	—
h6	2	#5	37'-6"	—
h7	2	#5	17'-6"	—
p1	12	#9	47'-0"	—
p2	12	#9	45'-9"	—
s1	138	#4	7'-3"	□
s2	95	#4	13'-11"	□
u1	12	#6	9'-10"	□
Class X Concrete				Cu Yds. 57.8
Reinforcement Bars				Lbs. 5810
Concrete Removal				Cu Yds. 72

PIERS 2 & 3
SBL RT 89 SEC. 125 VBR
MARSHALL COUNTY
STA. 295+98.75

DESIGNED *J.L. Armstrong*
CHECKED *J.L. Armstrong*
DRAWN *J.L. Armstrong*
CHECKED *J.L. Armstrong*

EXAMINED *J.L. Armstrong*
APPROVED *J.L. Armstrong*
DATE: JUNE 3 1970