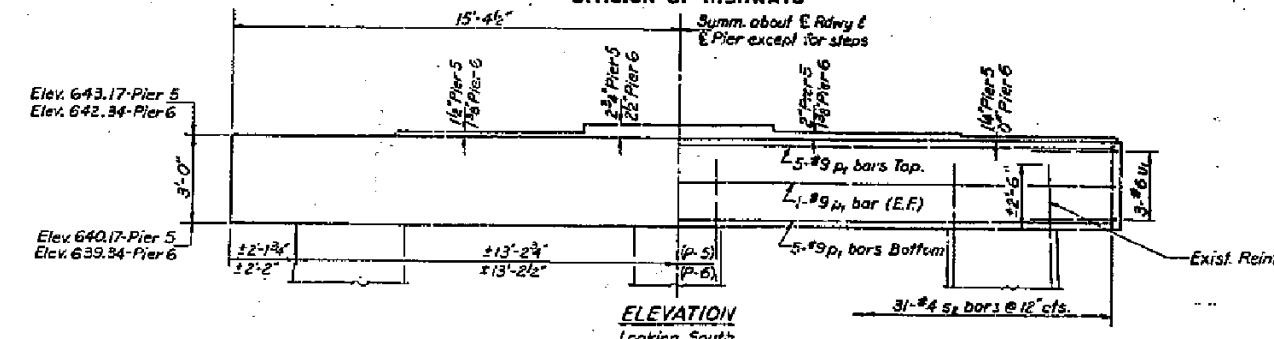
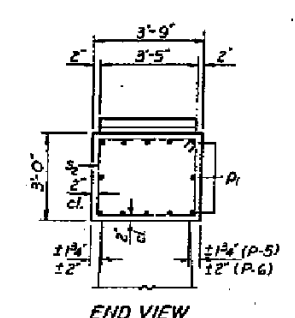
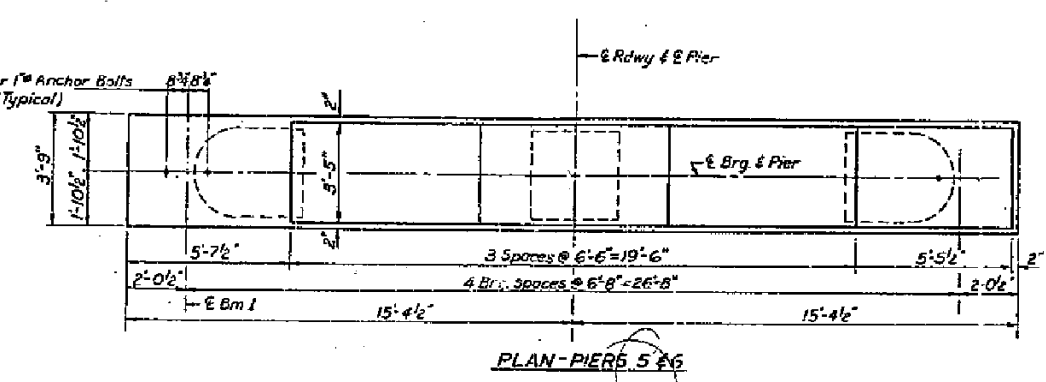
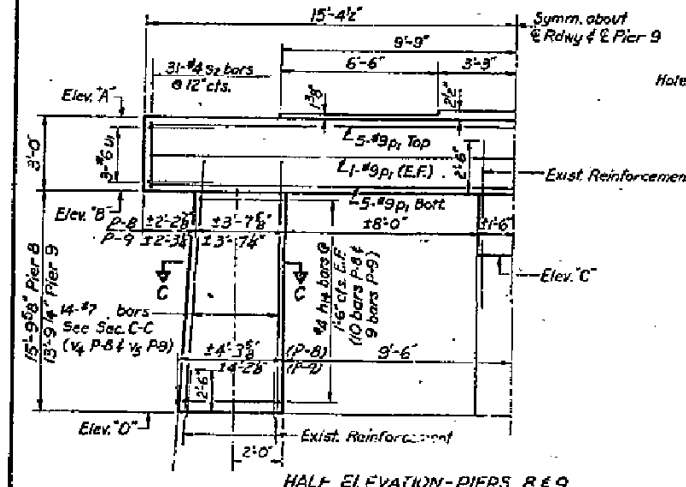
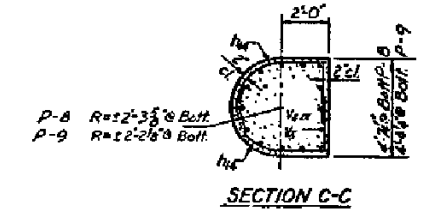


STATE OF ILLINOIS
DEPARTMENT OF PUBLIC WORKS & BUILDINGS
DIVISION OF HIGHWAYS

PROJECT NO.	SECTION	SHEET NO.	TOTAL SHEETS
89	125VBR	41	21
SHEET NO. 15			15 SHEETS



Note for Piers 5 & 6:
Remove existing concrete from top of pier to bottom of new cap. Existing vertical reinforcement in columns shall be cleaned and cut off 2'-6" above bottom of new cap. The horizontal tie bars shall be cleaned and left in place.



Note for Piers 7, 8, 9, 10 & 11:
Remove existing concrete from top of pier to Elev. 'C' (or Elev. 'D' Pier 9). Existing vertical reinforcement in columns shall be cleaned and incorporated into new construction as shown. The horizontal tie bars shall be cleaned and left in place.

VALUE OF A, B, C, & R_y

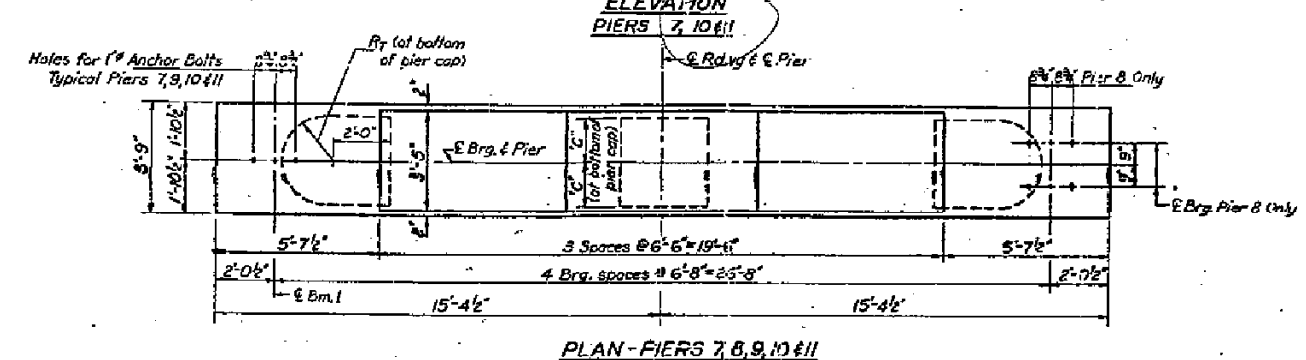
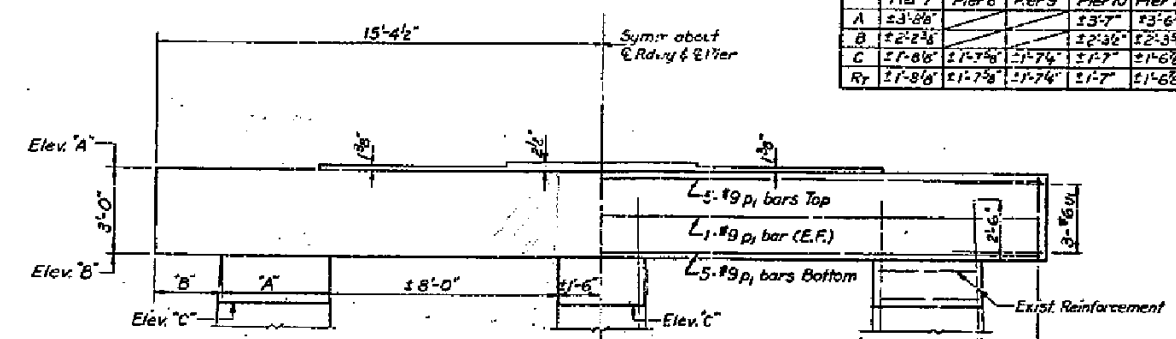
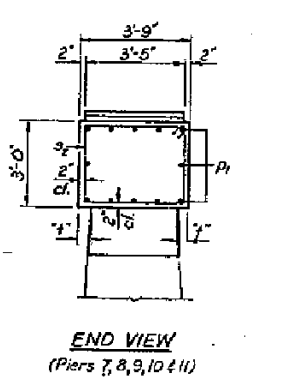
	Pier 7	Pier 8	Pier 9	Pier 10	Pier 11
A	±3'-2 1/2"			±3'-7"	±3'-6 1/2"
B	±2'-2 1/2"			±2'-3 1/2"	±2'-3 1/2"
C	±1'-8 1/2"	±1'-7 1/4"	±1'-7 1/4"	±1'-7"	±1'-6 3/8"
R _y	±1'-8 1/2"	±1'-7 1/4"	±1'-7 1/4"	±1'-7"	±1'-6 3/8"

ELEVATION-PIERS 7, 8, 9, 10 & 11

	Pier 7	Pier 8	Pier 9	Pier 10	Pier 11
Elev. 'A'	641.03	639.52	637.49	635.09	632.43
Elev. 'B'	638.03	636.52	634.49	632.09	629.43
Elev. 'C'	637.39	634.04	631.93	629.05	626.14
Elev. 'D'		620.71	620.72		

VALUE OF 'Y'

Pier	Y
Pier 7	±2'-5 1/2"
Pier 8	±2'-6"
Pier 9	±3'-6"
Pier 10	±2'-5 1/2"
Pier 11	±3'-8"



SEVEN PIERS BILL OF MATERIAL

Bar	No.	Size	Length	Shape
h ₁₆	76	#4	7'-9"	L
h ₁₈	84	#4	30'-6"	—
S ₂	217	#6	12'-11"	□
V ₄	28	#7	17'-6"	—
V ₂	28	#7	15'-6"	—
U ₁	42	#6	9'-4"	C
Class X Concrete		Cu.Yds		123.9
Reinforcement Bars		Lbs.		13,450
Concrete Removal		Cu.Yds		130

PIERS 5, 6, 7, 8, 9, 10 & 11
S.B.I. RT. 89 SEC. 125 V.M.R.
MARSHALL COUNTY
STA. 295 + 98.76

DESIGNED: *Wes Harty*
CHECKED: *Lynn Trase*
DRAWN: *J.L. Armstrong*
DATE: *JUNE 3 1970*