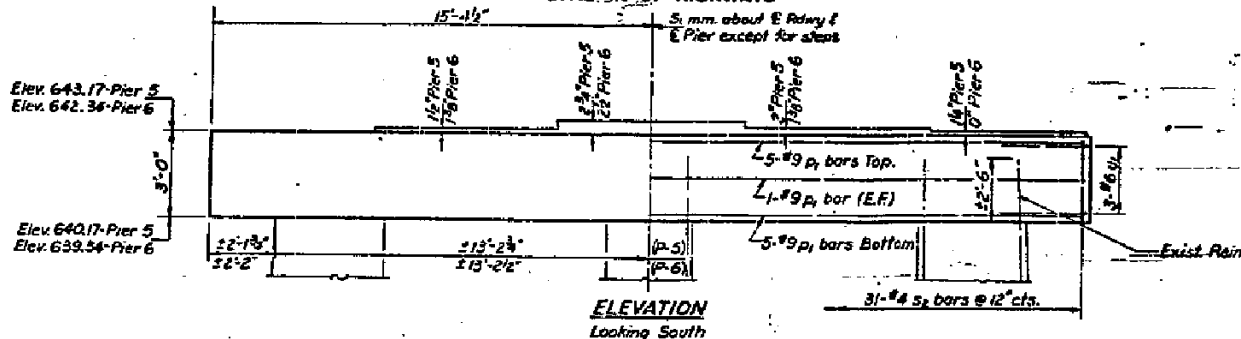
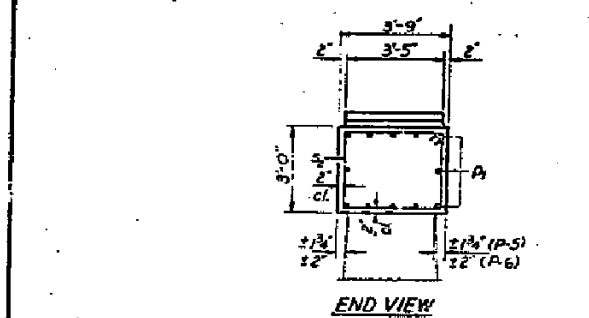
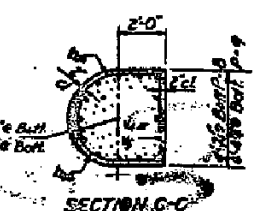


STATE OF ILLINOIS
DEPARTMENT OF PUBLIC WORKS & BUILDINGS
DIVISION OF HIGHWAYS

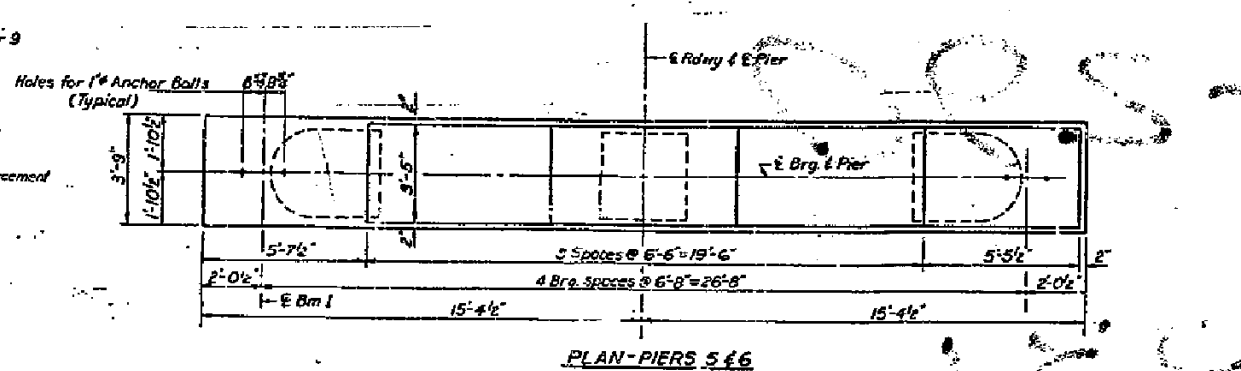
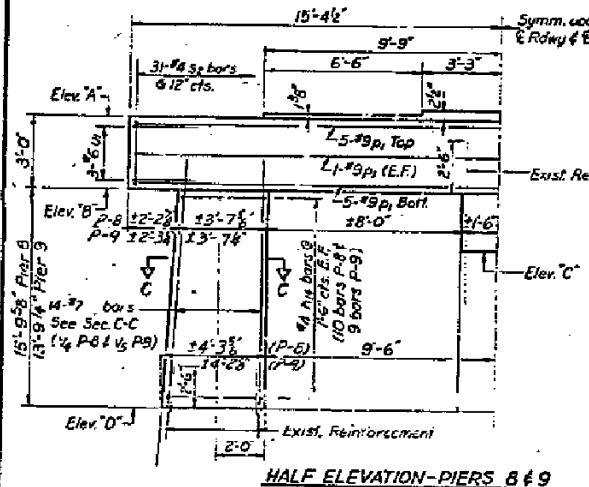
PROJECT NO.	25th MARSHALL	41	21A	SHEET NO. 15A
TOTAL SHEETS	45 SHEETS			



Note for Piers 5 & 6:
Remove existing concrete from top of pier to bottom of new cap. Existing vertical reinforcement in columns shall be cleaned and cut off 2'-6" above bottom of new cap. The horizontal re bars shall be cleaned and left in place.



Note for Piers 7, 8, 9, 10 & 11:
Remove existing concrete from top of pier to Elev. C for Elev. D Pier 9. Existing vertical reinforcement in columns shall be cleaned and incorporated into new construction as shown. The horizontal re bars shall be cleaned and left in place.

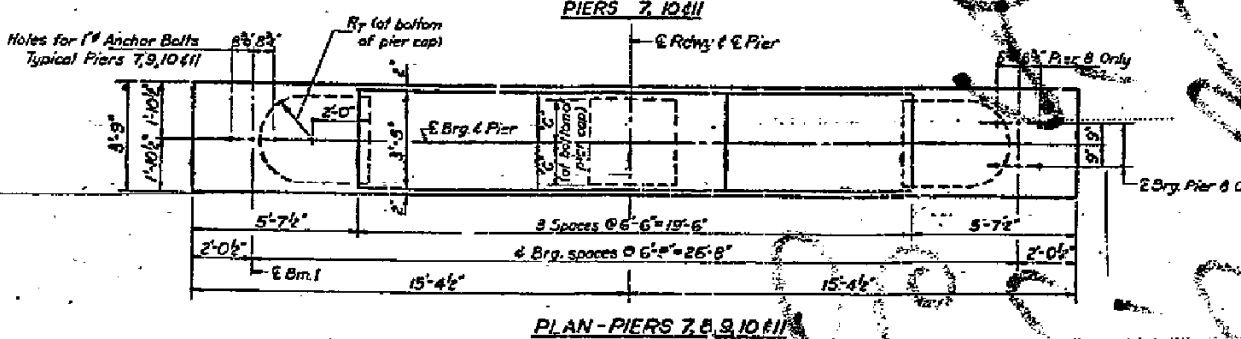
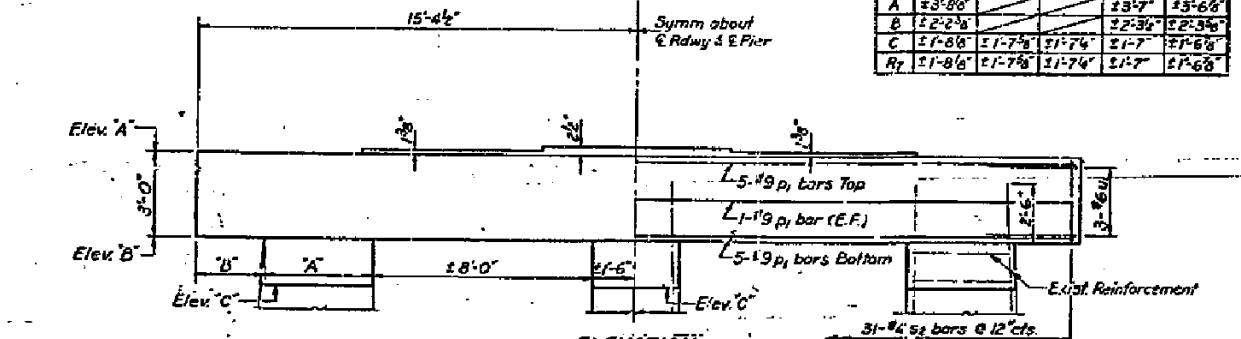
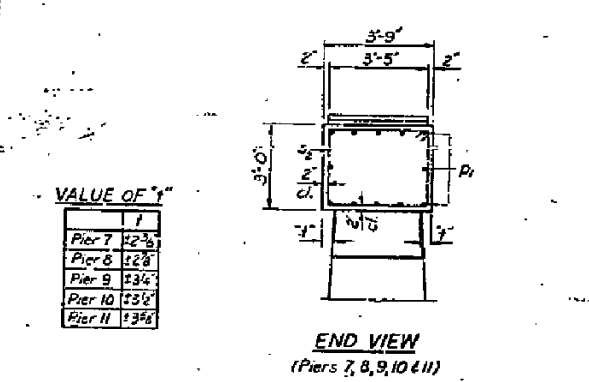


VALUE OF A, B, C & R_v

	Pier 7	Pier 8	Pier 9	Pier 10	Pier 11
A	23'-8"	23'-7"	23'-7"	23'-6"	23'-6"
B	22'-2"	22'-3"	22'-3"	22'-3"	22'-3"
C	21'-8"	21'-7"	21'-7"	21'-7"	21'-8"
R _v	21'-8"	21'-7"	21'-7"	21'-7"	21'-6"

ELEVATION-PIERS 7, 8, 9, 10 & 11

	Pier 7	Pier 8	Pier 9	Pier 10	Pier 11
Elev. A	641.03	639.52	637.49	635.09	632.83
Elev. B	638.52	636.52	634.49	632.09	629.83
Elev. C	637.59	634.84	631.93	629.05	626.14
Elev. D	620.71	620.72			



SEVEN PIERS
BILL OF MATERIAL

Bar	No.	Size	Length	Shape
h _u	76	#4	7'-9"	D
h _v	84	#9	30'-6"	—
s ₂	217	#4	8'-11"	D
v ₂	28	#7	17'-6"	—
v ₃	28	#7	15'-6"	—
u ₁	42	#6	9'-4"	—
Class X Concrete		Cu Yds	129.3	
Reinforcement Bars		Lbs.	13,450	
Concrete Removal		Cu Yds	130	

DESIGNED *W.A. Hays*
CHECKED *John A. Crandall*
DRAWN *J.L. Armstrong*
CHECKED *J.L. Armstrong*

EXAMINED *[Signature]*
PASSED *[Signature]*
APPROVED *[Signature]*

JUNE 3 1970

As Revised 1-8-71
PIERS 5, 6, 7, 8, 9, 10 & 11
S.B.I. RT. 89 SEC. 125 VBR
MARSHALL COUNTY
STA. 295+98.76