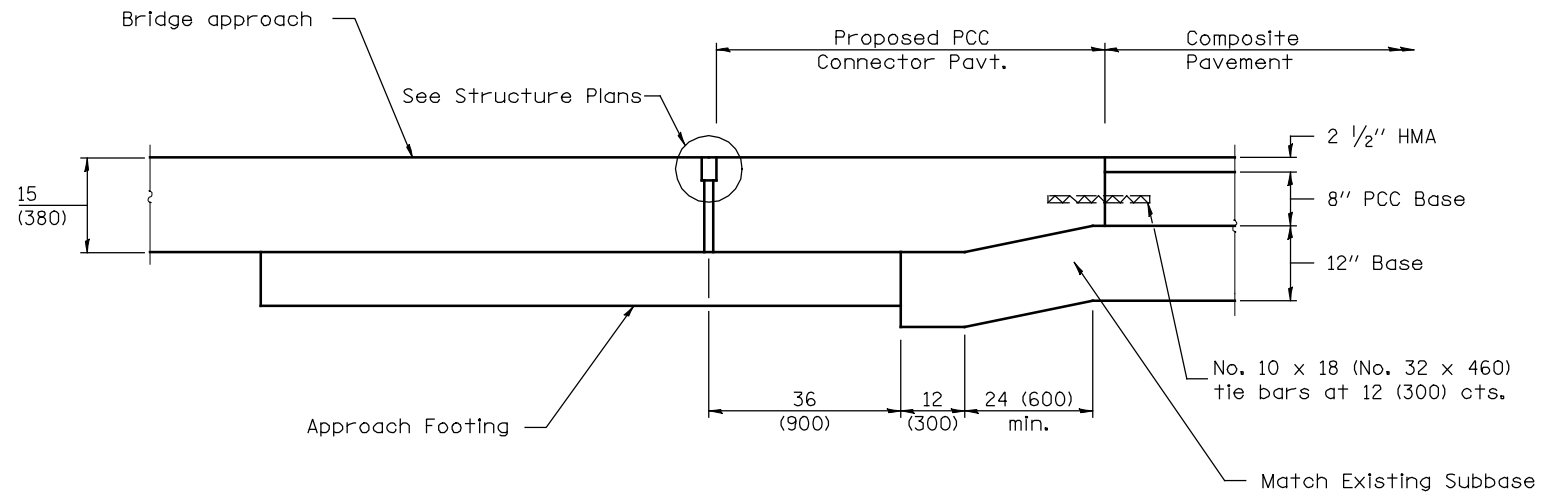


DESIGNER NOTE:  
 1. Include Standards 420001, 601101 and 420401 in plans.



**SECTION B-B - RIGID PAVEMENT**

GENERAL NOTES:

1. All work shall be done in accordance with Standard IDOT 420401 except as shown herein.
2. The bridge approach pavement connector (pcc) shall be constructed similar to section G-G for existing construction rigid pavement as shown standard IDOT 420401.

All dimensions are in inches (millimeters) unless otherwise noted.

01-01-97	RENUM. H-6.09, NEW REVISION BOX, NOTES	T.P.				<b>STATE OF ILLINOIS DEPARTMENT OF TRANSPORTATION</b>	<b>BRIDGE APPROACH PAVEMENT CONNECTOR (PCC) DETAIL</b>	F.A.P. RTE.	SECTION	COUNTY	TOTAL SHEETS	SHEET NO.
02-22-97	REVISED SECTION A-A				698			(125VBR)BR	MARSHALL	148	133	
03-01-97	CORRECT STD. NO. IN NOTES	J.A.						CONTRACT NO. 68580				
10-16-06	REVISED TO 2007 SPEC.	M.A.			FED. ROAD DIST. NO.			ILLINOIS	FED. AID PROJECT			

NOT TO SCALE